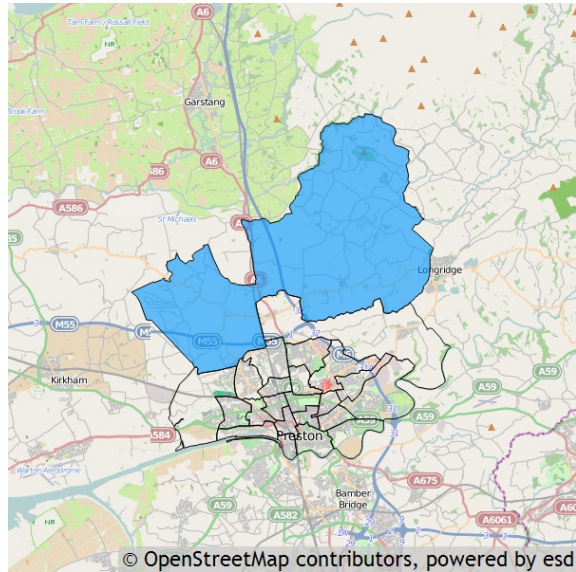


## Basic facts about Preston Rural North

Preston Rural North is one of the 22 wards of Preston. It has an area of 7,769.02 hectares which represents 54.35% of the total local authority area of Preston.

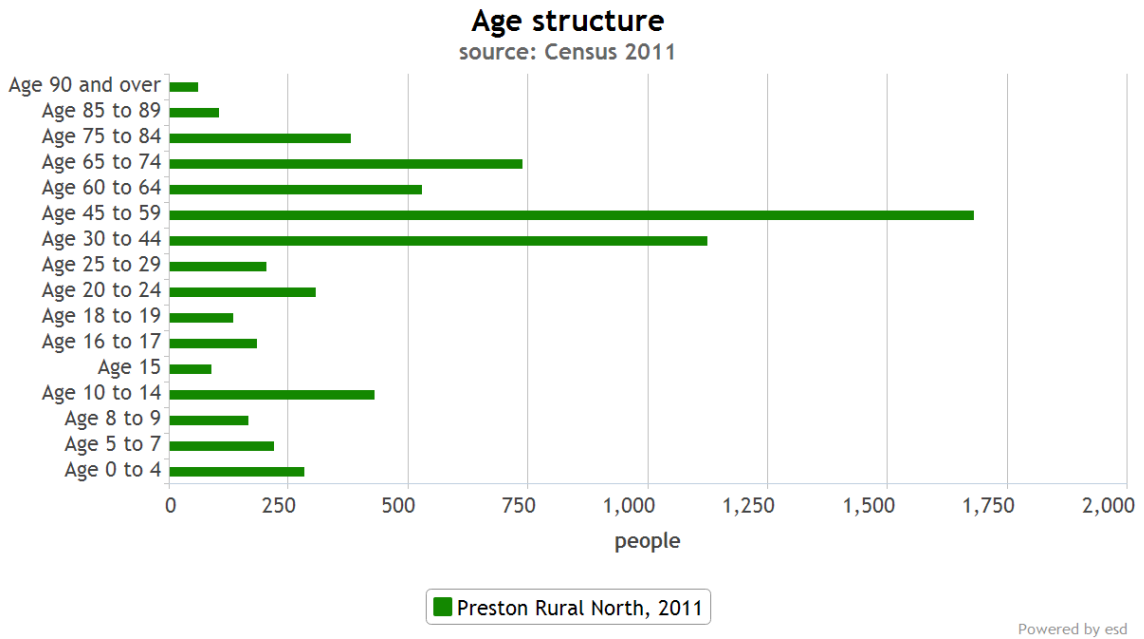


### Residents

Preston Rural North has a resident population of 6,647 which represents 4.74% of the total local authority resident population of 140,202.

### Age

The mean age of the Preston Rural North population is 43 years which is older than the mean age of 37 years for residents in the whole local authority. The predominant age band is Age 45 to 59.

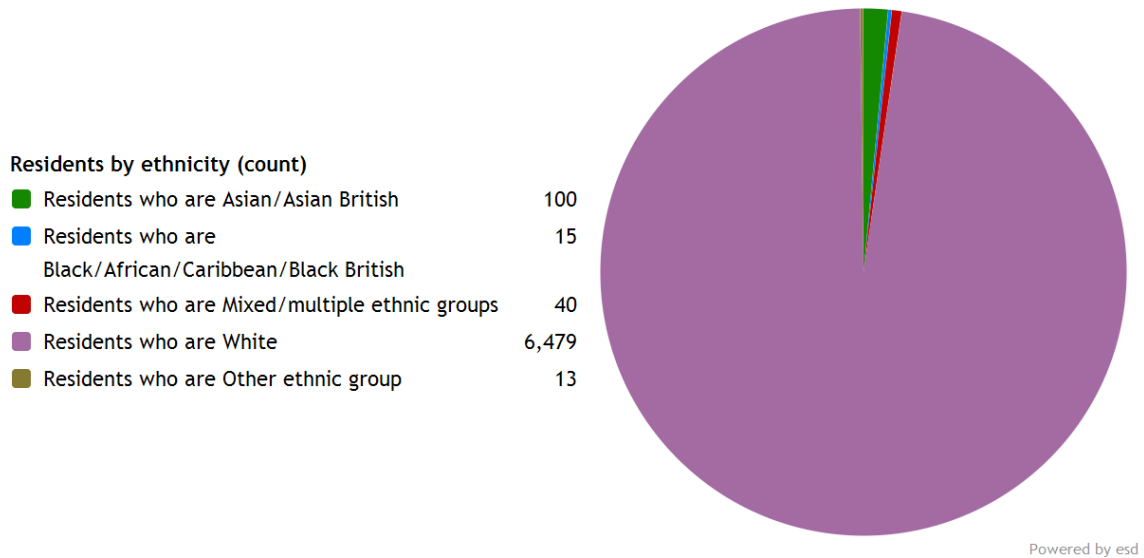


## Ethnicity

The largest ethnic group is *Residents who are White* with 97.5% of the ward's population. That compares with 80.2% for the local authority as a whole, 90.2% for North West and 85.4% for the whole of England.

The second largest ethnic group is *Residents who are Asian/Asian British* with 1.5% of the ward's population. That compares with 15.5% for the local authority as a whole, 6.2% for North West and 7.8% for the whole of England.

The ethnic split of Preston Rural North's residents is shown below.



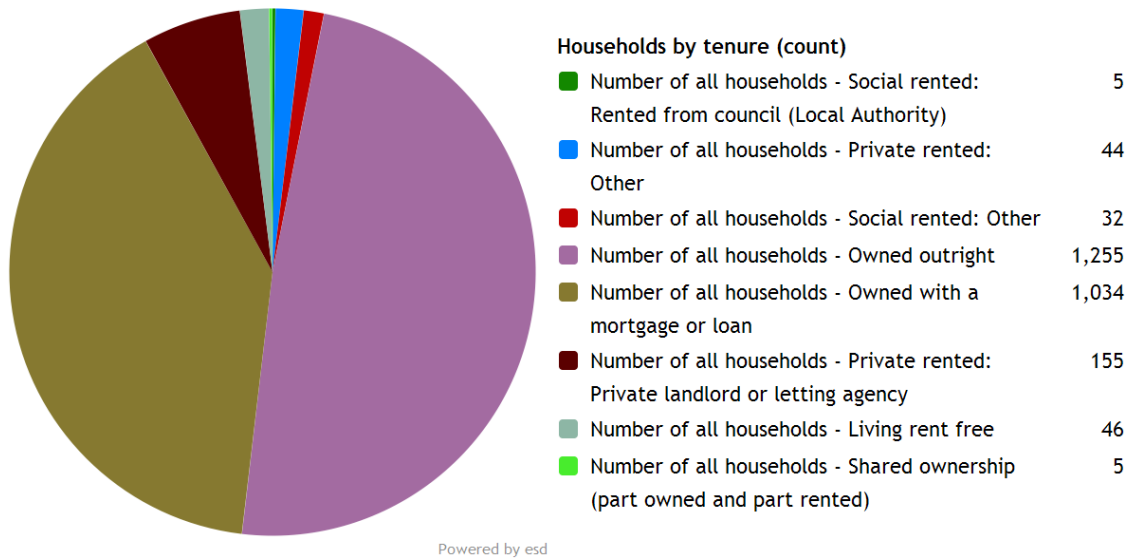
Preston Rural North's resident population is 51.4% female and 48.6% male.

The ward has 213 households with **dependent children aged 0 to 4**. That represents 8.27% of the ward's households.

752 households in the ward have **dependent children of all ages**. That represents 29.19% of the ward's households.

## Households

Preston Rural North has 2,576 households, which represent 4.47% of Preston's 57,567 households. The household split by tenure is shown below.



The largest number of households lives in *Number of all households - Owned outright* accommodation with 48.7% of the ward's households. That compares with 28.4% for the local authority as a whole, 28.6% for North West and 32.8% for the whole of England.

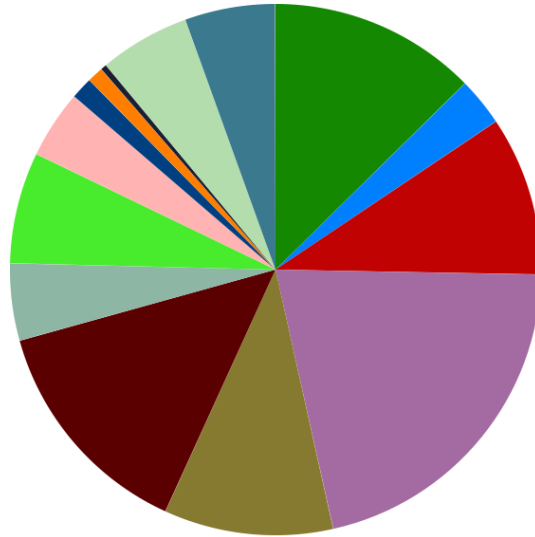
The second largest number of households lives in *Number of all households - Owned with a mortgage or loan* accommodation with 40.1% of the ward's households. That compares with 32.2% for the local authority as a whole, 33.2% for North West and 34.5% for the whole of England.

## Employment

A breakdown of Preston Rural North by socio-economic classification is given below.

### Residents by NS-Sec (count)

NS-Sec: Higher managerial, administrative and professional	771
NS-Sec: Large employers and higher managerial and administrative	179
NS-Sec: Higher professional	592
NS-Sec: Lower managerial, administrative and professional	1,293
NS-Sec: Intermediate	627
NS-Sec: Small employers and own account workers	846
NS-Sec: Lower supervisory and technical	286
NS-Sec: Semi-routine occupations	413
NS-Sec: Routine occupations	253
NS-Sec: Never worked and long-term unemployed	81
NS-Sec: Never worked	59
NS-Sec: Long-term unemployed	22
NS-Sec: Not classified	336
NS-Sec: Full-time students	336
NS-Sec: Not classifiable for other reasons	0

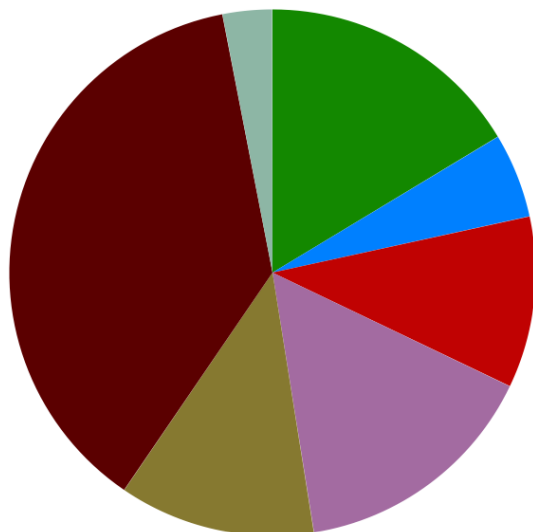


Powered by esd

The largest group is NS-Sec: Lower managerial, administrative and professional representing 26.36% of the ward's population.

12 of the lone parent households in Preston Rural North are not in employment.

## Education



### Residents by educational qualifications (count)

No qualifications	893
Apprenticeship	284
Level 1 qualifications	575
Level 2 qualifications	839
Level 3 qualifications	657
Level 4 qualifications and above	2,042
Other qualifications	166

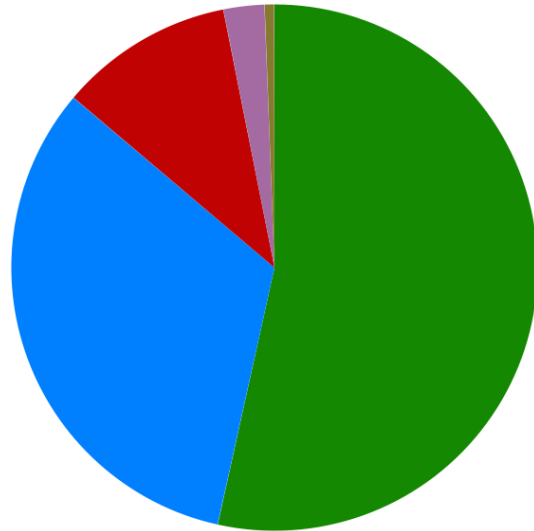
Powered by esd

The highest level of educational qualification achieved by the biggest group of Preston Rural North residents is Level 4 qualifications and above, which applies to 37.43%.

## Health

### Residents by level of health (count)

Very good health	3,554
Good health	2,174
Fairly good health	712
Poor health	167
Very bad health	40



Powered by esd

Preston Rural North has 167 (2.51%) residents in poor health and 40 (0.60%) residents in very bad health.

Its ranking for the number of residents in very bad health is 4 (out of 22) within Preston, 212 (out of 935) within North West, and 2,446 (out of 7,707) within England.

## Glossary

Metrics used in this report are as follows:

**Residents by age group (count).** Source: Office for National Statistics. Dataset: Census 2011.  
<http://www.ons.gov.uk/ons/guide-method/census/2011/census-data/index.html>

**Residents by ethnicity (count).** Source: Office for National Statistics. Dataset: Census 2011.  
<http://www.ons.gov.uk/ons/guide-method/census/2011/census-data/index.html>

**Households by tenure (count).** Source: Office for National Statistics. Dataset: Census 2011.  
<http://www.ons.gov.uk/ons/guide-method/census/2011/census-data/index.html>

**Residents by NS-Sec (count).** Source: Office for National Statistics. Dataset: Census 2011.  
<http://www.ons.gov.uk/ons/guide-method/census/2011/census-data/index.html>

**Residents by educational qualifications (count).** Source: Office for National Statistics. Dataset: Census 2011.  
<http://www.ons.gov.uk/ons/guide-method/census/2011/census-data/index.html>

**Residents by level of health (count).** Source: Office for National Statistics. Dataset: Census 2011.  
<http://www.ons.gov.uk/ons/guide-method/census/2011/census-data/index.html>