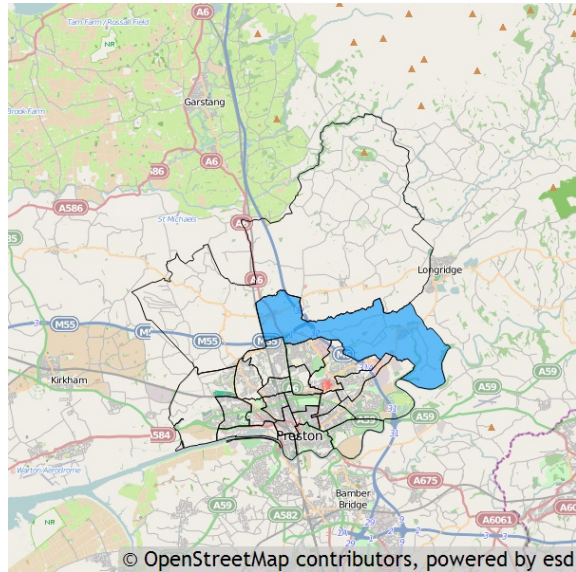


## Basic facts about Preston Rural East

Preston Rural East is one of the 22 wards of Preston. It has an area of 1,858.43 hectares which represents 13.00% of the total local authority area of Preston.

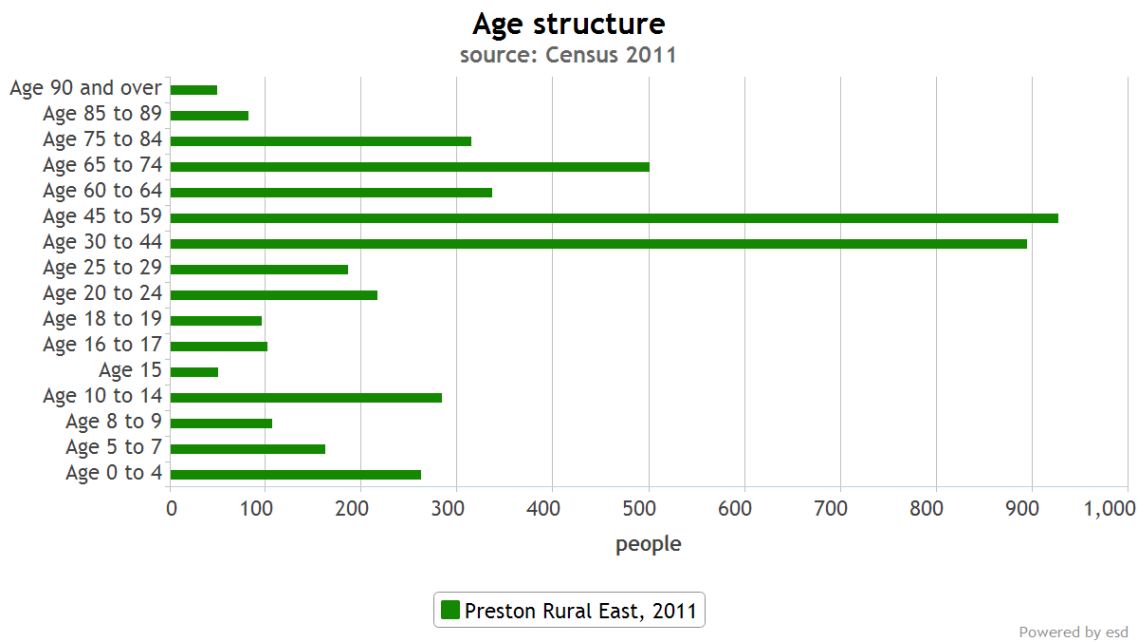


### Residents

Preston Rural East has a resident population of 4,577 which represents 3.26% of the total local authority resident population of 140,202.

### Age

The mean age of the Preston Rural East population is 42 years which is older than the mean age of 37 years for residents in the whole local authority. The predominant age band is Age 45 to 59.

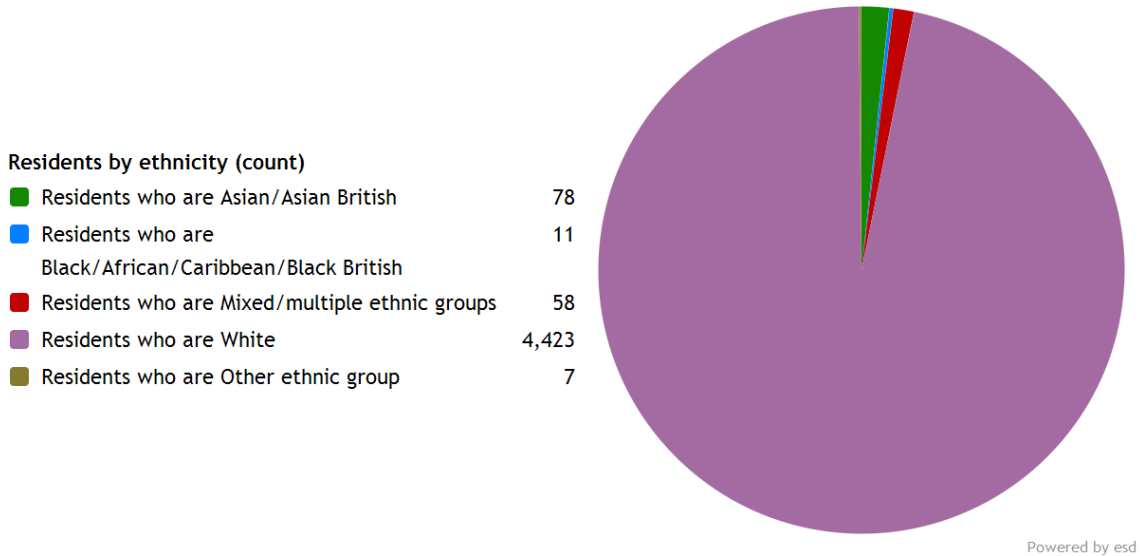


## Ethnicity

The largest ethnic group is *Residents who are White* with 96.6% of the ward's population. That compares with 80.2% for the local authority as a whole, 90.2% for North West and 85.4% for the whole of England.

The second largest ethnic group is *Residents who are Asian/Asian British* with 1.7% of the ward's population. That compares with 15.5% for the local authority as a whole, 6.2% for North West and 7.8% for the whole of England.

The ethnic split of Preston Rural East's residents is shown below.



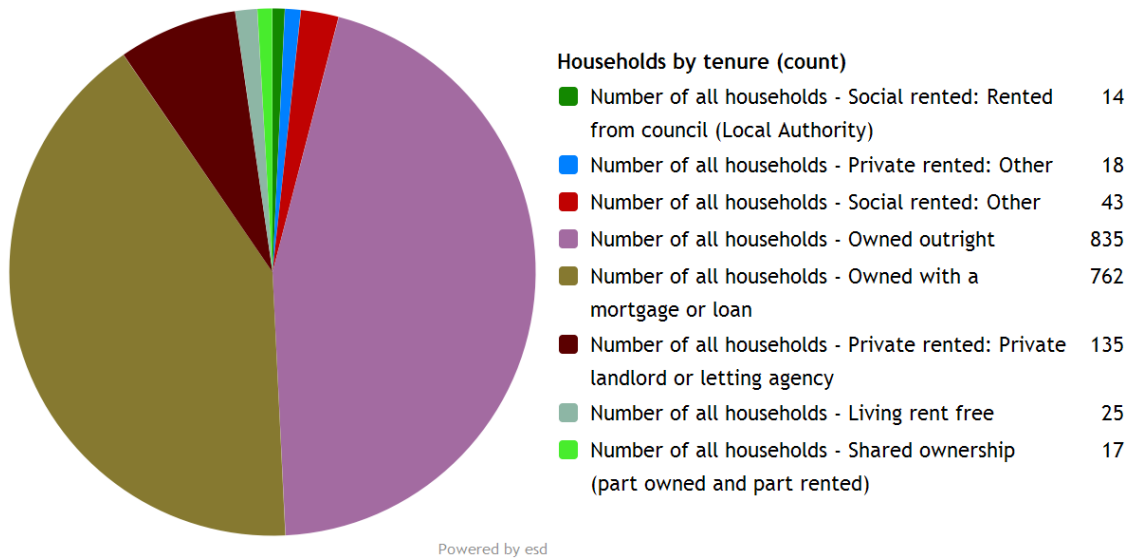
Preston Rural East's resident population is 50.7% female and 49.3% male.

The ward has 202 households with **dependent children aged 0 to 4**. That represents 10.92% of the ward's households.

557 households in the ward have **dependent children of all ages**. That represents 30.12% of the ward's households.

## Households

Preston Rural East has 1,849 households, which represent 3.21% of Preston's 57,567 households. The household split by tenure is shown below.



The largest number of households lives in *Number of all households - Owned outright* accommodation with 45.2% of the ward's households. That compares with 28.4% for the local authority as a whole, 28.6% for North West and 32.8% for the whole of England.

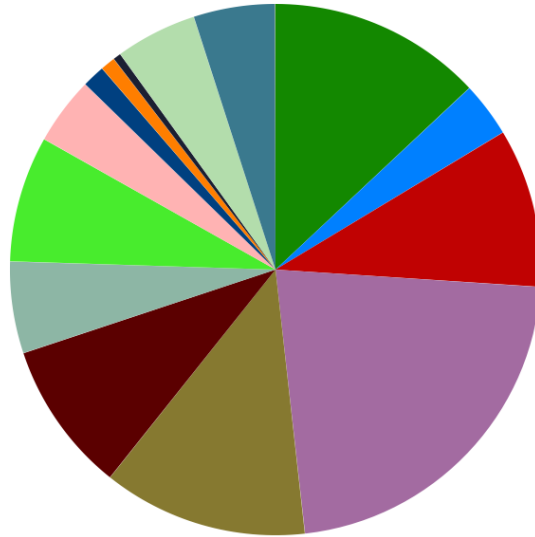
The second largest number of households lives in *Number of all households - Owned with a mortgage or loan* accommodation with 41.2% of the ward's households. That compares with 32.2% for the local authority as a whole, 33.2% for North West and 34.5% for the whole of England.

## Employment

A breakdown of Preston Rural East by socio-economic classification is given below.

### Residents by NS-Sec (count)

NS-Sec: Higher managerial, administrative and professional	527
NS-Sec: Large employers and higher managerial and administrative	135
NS-Sec: Higher professional	392
NS-Sec: Lower managerial, administrative and professional	897
NS-Sec: Intermediate	505
NS-Sec: Small employers and own account workers	372
NS-Sec: Lower supervisory and technical	226
NS-Sec: Semi-routine occupations	310
NS-Sec: Routine occupations	167
NS-Sec: Never worked and long-term unemployed	56
NS-Sec: Never worked	37
NS-Sec: Long-term unemployed	19
NS-Sec: Not classified	201
NS-Sec: Full-time students	201
NS-Sec: Not classifiable for other reasons	0

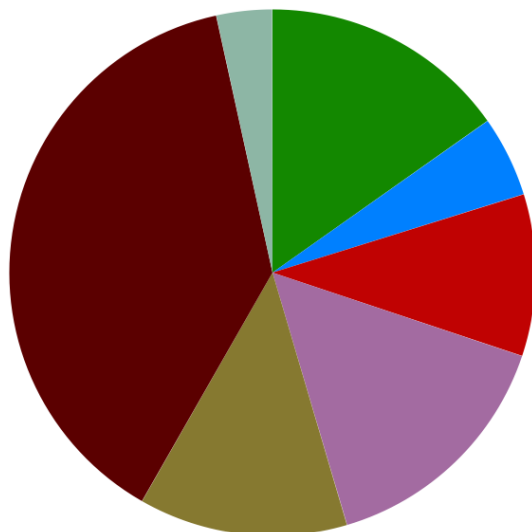


Powered by esd

The largest group is NS-Sec: Lower managerial, administrative and professional representing 27.51% of the ward's population.

10 of the lone parent households in Preston Rural East are not in employment.

## Education



### Residents by educational qualifications (count)

No qualifications	565
Apprenticeship	184
Level 1 qualifications	369
Level 2 qualifications	567
Level 3 qualifications	476
Level 4 qualifications and above	1,421
Other qualifications	127

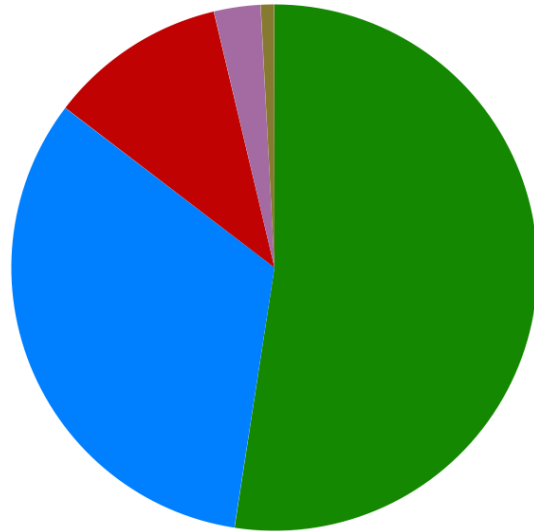
Powered by esd

The highest level of educational qualification achieved by the biggest group of Preston Rural East residents is Level 4 qualifications and above, which applies to 38.31%.

## Health

### Residents by level of health (count)

Very good health	2,400
Good health	1,508
Fairly good health	500
Poor health	131
Very bad health	38



Powered by esd

Preston Rural East has 131 (2.86%) residents in poor health and 38 (0.83%) residents in very bad health.

Its ranking for the number of residents in very bad health is 2 (out of 22) within Preston, 202 (out of 935) within North West, and 2,280 (out of 7,707) within England.

## Glossary

Metrics used in this report are as follows:

**Residents by age group (count).** Source: Office for National Statistics. Dataset: Census 2011.  
<http://www.ons.gov.uk/ons/guide-method/census/2011/census-data/index.html>

**Residents by ethnicity (count).** Source: Office for National Statistics. Dataset: Census 2011.  
<http://www.ons.gov.uk/ons/guide-method/census/2011/census-data/index.html>

**Households by tenure (count).** Source: Office for National Statistics. Dataset: Census 2011.  
<http://www.ons.gov.uk/ons/guide-method/census/2011/census-data/index.html>

**Residents by NS-Sec (count).** Source: Office for National Statistics. Dataset: Census 2011.  
<http://www.ons.gov.uk/ons/guide-method/census/2011/census-data/index.html>

**Residents by educational qualifications (count).** Source: Office for National Statistics. Dataset: Census 2011.  
<http://www.ons.gov.uk/ons/guide-method/census/2011/census-data/index.html>

**Residents by level of health (count).** Source: Office for National Statistics. Dataset: Census 2011.  
<http://www.ons.gov.uk/ons/guide-method/census/2011/census-data/index.html>