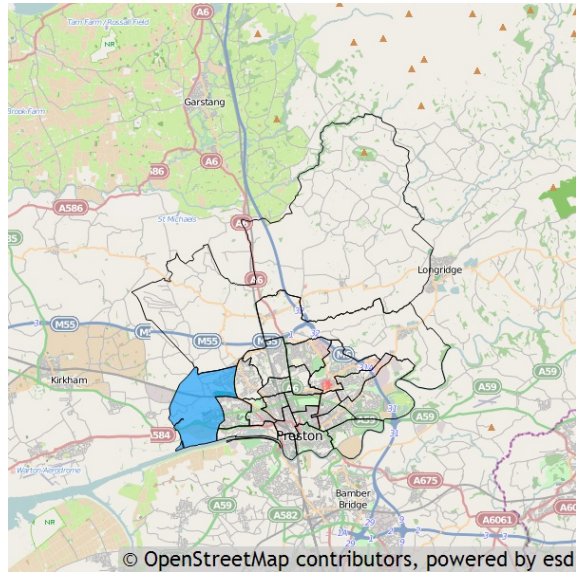


Basic facts about Lea

Lea is one of the 22 wards of Preston. It has an area of 839.21 hectares which represents 5.87% of the total local authority area of Preston.

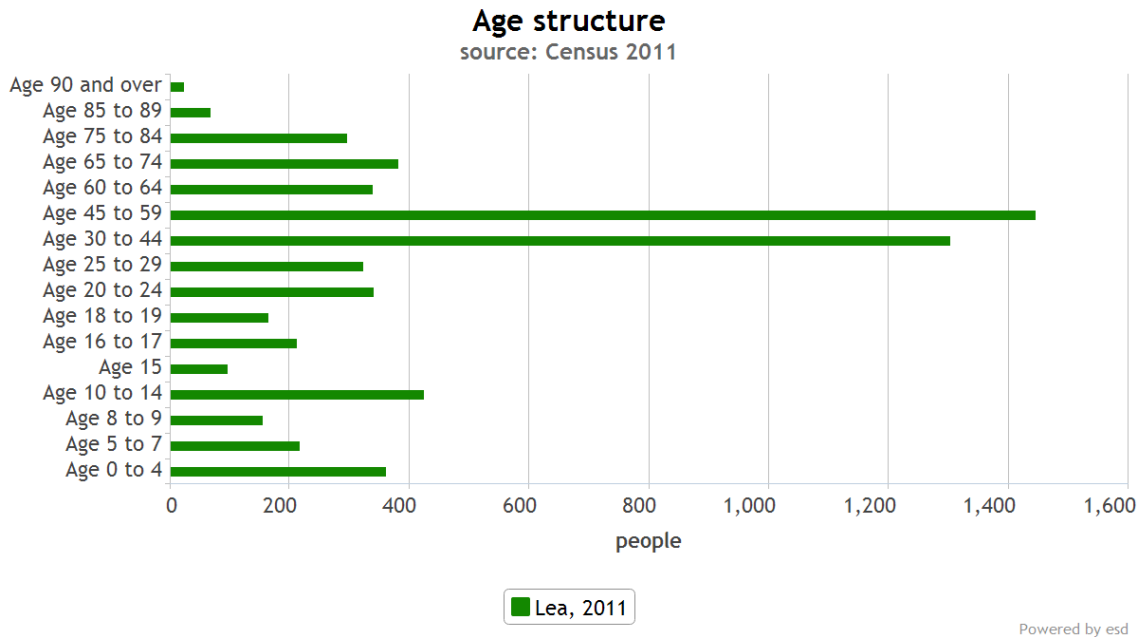


Residents

Lea has a resident population of 6,157 which represents 4.39% of the total local authority resident population of 140,202.

Age

The mean age of the Lea population is 38 years which is older than the mean age of 37 years for residents in the whole local authority. The predominant age band is Age 45 to 59.

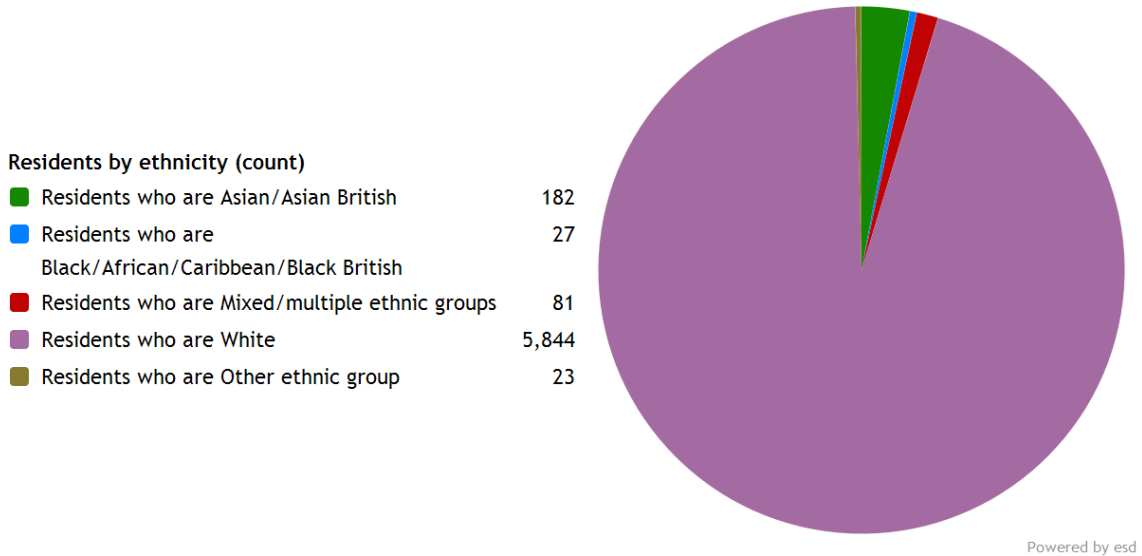


Ethnicity

The largest ethnic group is *Residents who are White* with 94.9% of the ward's population. That compares with 80.2% for the local authority as a whole, 90.2% for North West and 85.4% for the whole of England.

The second largest ethnic group is *Residents who are Asian/Asian British* with 3.0% of the ward's population. That compares with 15.5% for the local authority as a whole, 6.2% for North West and 7.8% for the whole of England.

The ethnic split of Lea's residents is shown below.



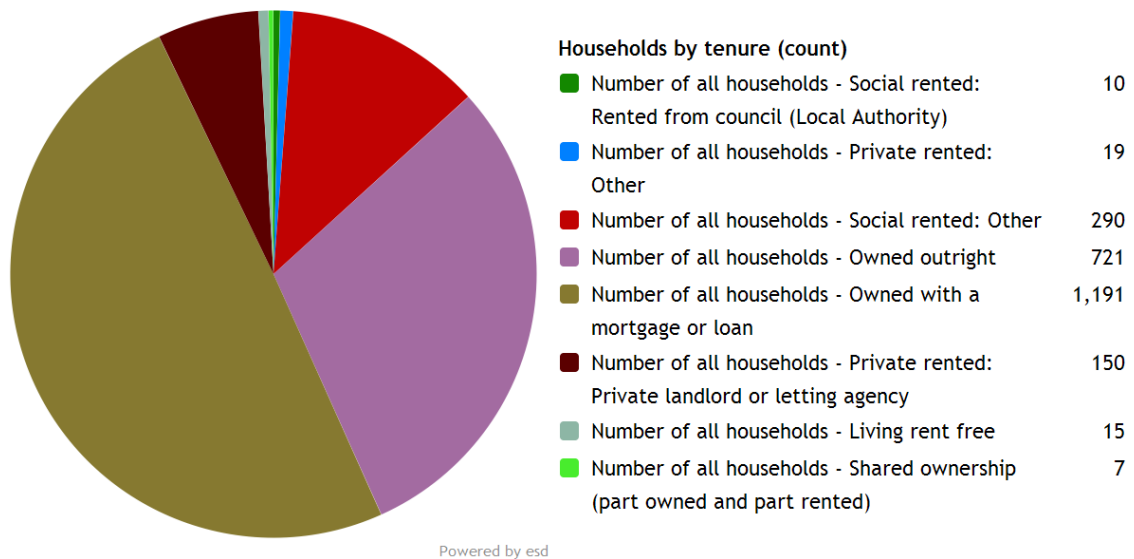
Lea's resident population is 49.9% female and 50.1% male.

The ward has 280 households with **dependent children aged 0 to 4**. That represents 11.65% of the ward's households.

855 households in the ward have **dependent children of all ages**. That represents 35.58% of the ward's households.

Households

Lea has 2,403 households, which represent 4.17% of Preston's 57,567 households. The household split by tenure is shown below.



The largest number of households lives in *Number of all households - Owned with a mortgage or loan* accommodation with 49.6% of the ward's households. That compares with 32.2% for the local authority as a whole, 33.2% for North West and 34.5% for the whole of England.

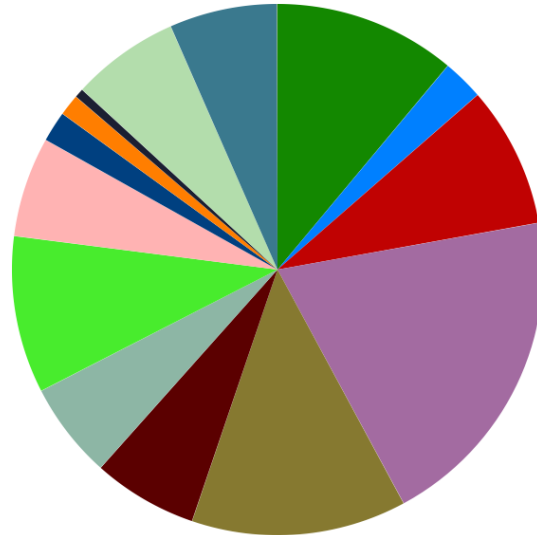
The second largest number of households lives in *Number of all households - Owned outright* accommodation with 30.0% of the ward's households. That compares with 28.4% for the local authority as a whole, 28.6% for North West and 32.8% for the whole of England.

Employment

A breakdown of Lea by socio-economic classification is given below.

Residents by NS-Sec (count)

NS-Sec: Higher managerial, administrative and professional	622
NS-Sec: Large employers and higher managerial and administrative	140
NS-Sec: Higher professional	482
NS-Sec: Lower managerial, administrative and professional	1,118
NS-Sec: Intermediate	735
NS-Sec: Small employers and own account workers	358
NS-Sec: Lower supervisory and technical	328
NS-Sec: Semi-routine occupations	537
NS-Sec: Routine occupations	342
NS-Sec: Never worked and long-term unemployed	104
NS-Sec: Never worked	73
NS-Sec: Long-term unemployed	31
NS-Sec: Not classified	369
NS-Sec: Full-time students	369
NS-Sec: Not classifiable for other reasons	0

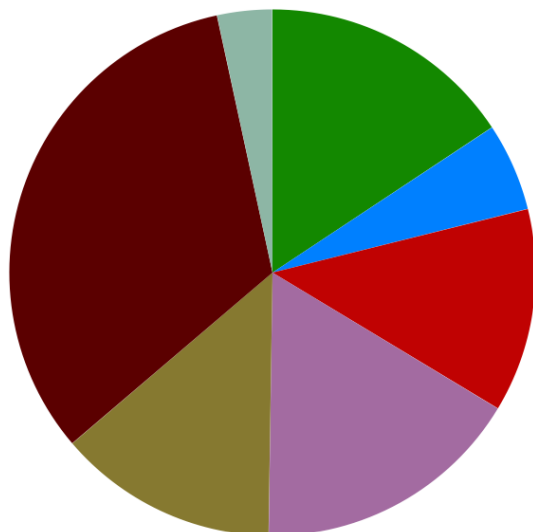


Powered by esd

The largest group is NS-Sec: Lower managerial, administrative and professional representing 24.77% of the ward's population.

41 of the lone parent households in Lea are not in employment.

Education



Residents by educational qualifications (count)

No qualifications	770
Apprenticeship	265
Level 1 qualifications	614
Level 2 qualifications	813
Level 3 qualifications	663
Level 4 qualifications and above	1,610
Other qualifications	166

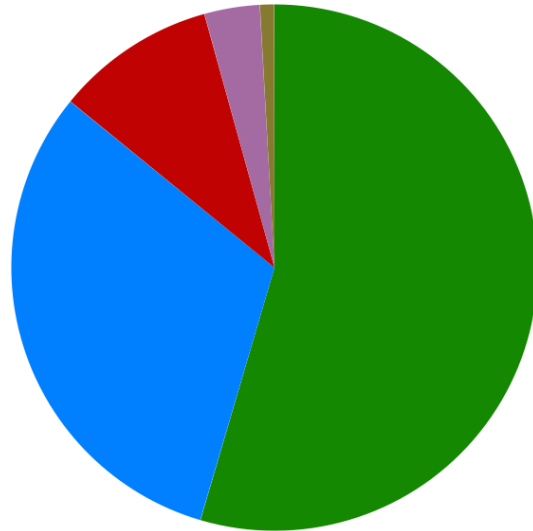
Powered by esd

The highest level of educational qualification achieved by the biggest group of Lea residents is Level 4 qualifications and above, which applies to 32.85%.

Health

Residents by level of health (count)

Very good health	3,359
Good health	1,928
Fairly good health	606
Poor health	210
Very bad health	54



Powered by esd

Lea has 210 (3.41%) residents in poor health and 54 (0.88%) residents in very bad health.

Its ranking for the number of residents in very bad health is 7 (out of 22) within Preston, 288 (out of 935) within North West, and 3,411 (out of 7,707) within England.

Glossary

Metrics used in this report are as follows:

Residents by age group (count). Source: Office for National Statistics. Dataset: Census 2011. <http://www.ons.gov.uk/ons/guide-method/census/2011/census-data/index.html>

Residents by ethnicity (count). Source: Office for National Statistics. Dataset: Census 2011. <http://www.ons.gov.uk/ons/guide-method/census/2011/census-data/index.html>

Households by tenure (count). Source: Office for National Statistics. Dataset: Census 2011. <http://www.ons.gov.uk/ons/guide-method/census/2011/census-data/index.html>

Residents by NS-Sec (count). Source: Office for National Statistics. Dataset: Census 2011. <http://www.ons.gov.uk/ons/guide-method/census/2011/census-data/index.html>

Residents by educational qualifications (count). Source: Office for National Statistics. Dataset: Census 2011. <http://www.ons.gov.uk/ons/guide-method/census/2011/census-data/index.html>

Residents by level of health (count). Source: Office for National Statistics. Dataset: Census 2011. <http://www.ons.gov.uk/ons/guide-method/census/2011/census-data/index.html>

