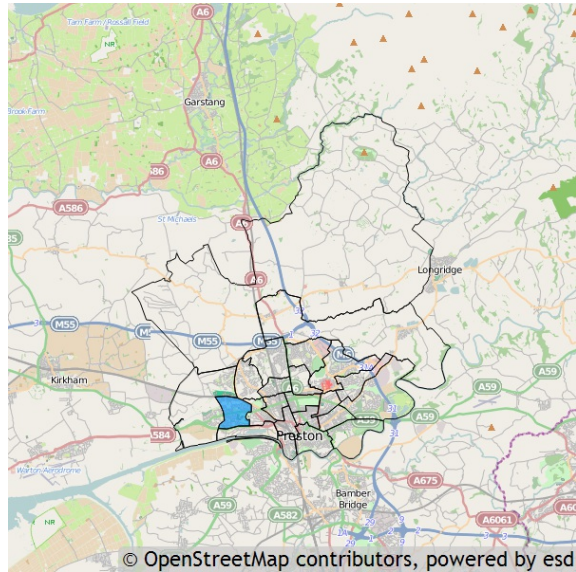


Basic facts about Larches

Larches is one of the 22 wards of Preston. It has an area of 186.38 hectares which represents 1.30% of the total local authority area of Preston.

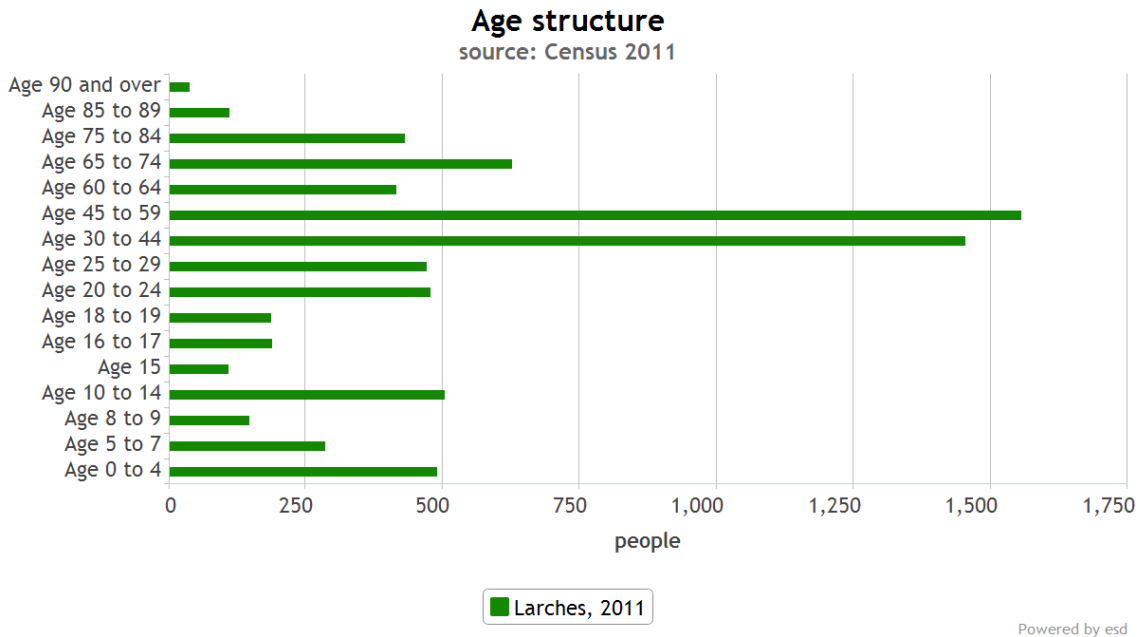


Residents

Larches has a resident population of 7,500 which represents 5.35% of the total local authority resident population of 140,202.

Age

The mean age of the Larches population is 39 years which is older than the mean age of 37 years for residents in the whole local authority. The predominant age band is Age 45 to 59.

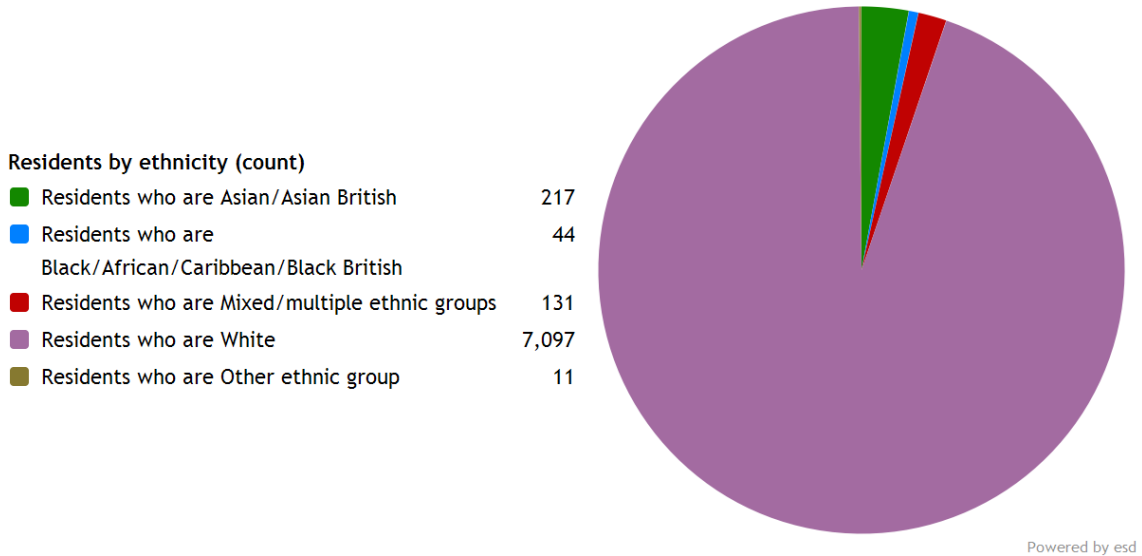


Ethnicity

The largest ethnic group is *Residents who are White* with 94.6% of the ward's population. That compares with 80.2% for the local authority as a whole, 90.2% for North West and 85.4% for the whole of England.

The second largest ethnic group is *Residents who are Asian/Asian British* with 2.9% of the ward's population. That compares with 15.5% for the local authority as a whole, 6.2% for North West and 7.8% for the whole of England.

The ethnic split of Larches's residents is shown below.



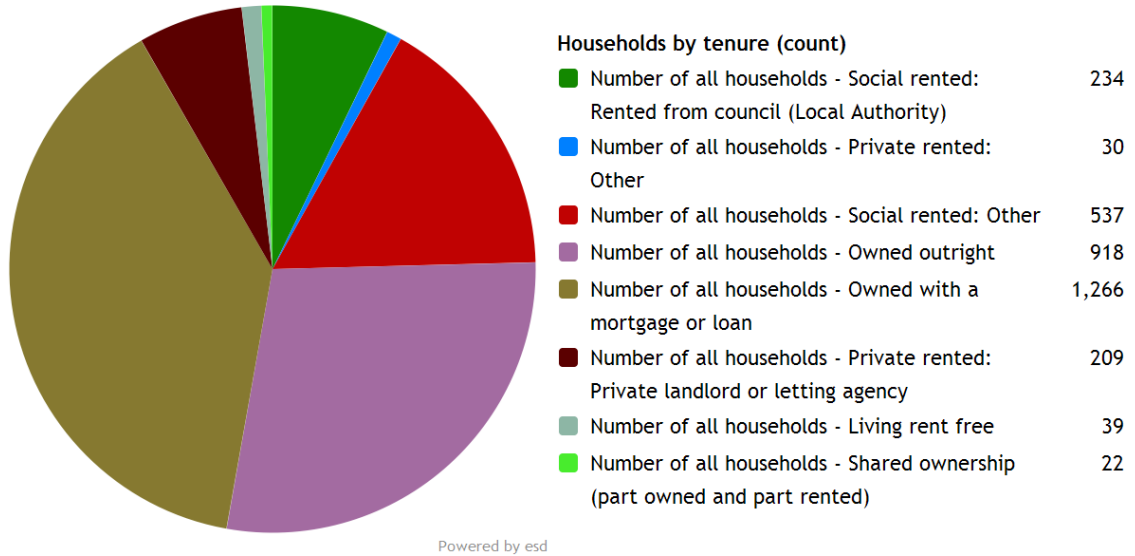
Larches's resident population is 50.8% female and 49.2% male.

The ward has 396 households with **dependent children aged 0 to 4**. That represents 12.17% of the ward's households.

996 households in the ward have **dependent children of all ages**. That represents 30.60% of the ward's households.

Households

Larches has 3,255 households, which represent 5.65% of Preston's 57,567 households. The household split by tenure is shown below.



The largest number of households lives in *Number of all households - Owned with a mortgage or loan* accommodation with 38.9% of the ward's households. That compares with 32.2% for the local authority as a whole, 33.2% for North West and 34.5% for the whole of England.

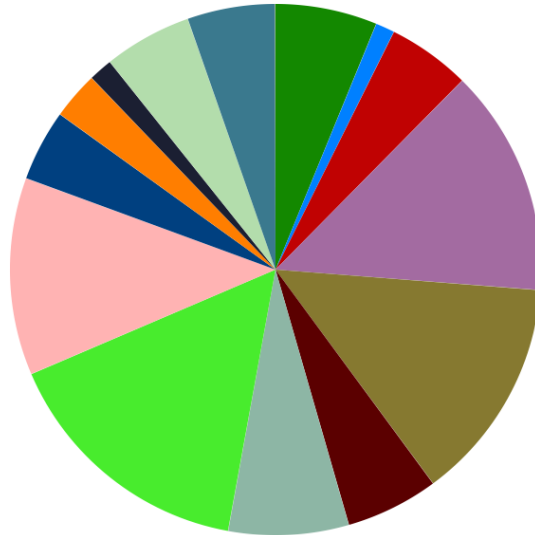
The second largest number of households lives in *Number of all households - Owned outright* accommodation with 28.2% of the ward's households. That compares with 28.4% for the local authority as a whole, 28.6% for North West and 32.8% for the whole of England.

Employment

A breakdown of Larches by socio-economic classification is given below.

Residents by NS-Sec (count)

NS-Sec: Higher managerial, administrative and professional	397
NS-Sec: Large employers and higher managerial and administrative	74
NS-Sec: Higher professional	323
NS-Sec: Lower managerial, administrative and professional	885
NS-Sec: Intermediate	874
NS-Sec: Small employers and own account workers	362
NS-Sec: Lower supervisory and technical	469
NS-Sec: Semi-routine occupations	1,005
NS-Sec: Routine occupations	769
NS-Sec: Never worked and long-term unemployed	278
NS-Sec: Never worked	185
NS-Sec: Long-term unemployed	93
NS-Sec: Not classified	343
NS-Sec: Full-time students	343
NS-Sec: Not classifiable for other reasons	0

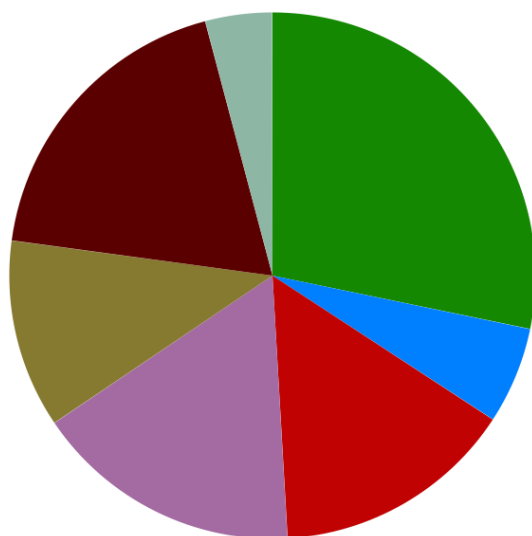


Powered by esd

The largest group is NS-Sec: Semi-routine occupations representing 18.67% of the ward's population.

113 of the lone parent households in Larches are not in employment.

Education



Residents by educational qualifications (count)

No qualifications	1,685
Apprenticeship	355
Level 1 qualifications	888
Level 2 qualifications	981
Level 3 qualifications	691
Level 4 qualifications and above	1,118
Other qualifications	245

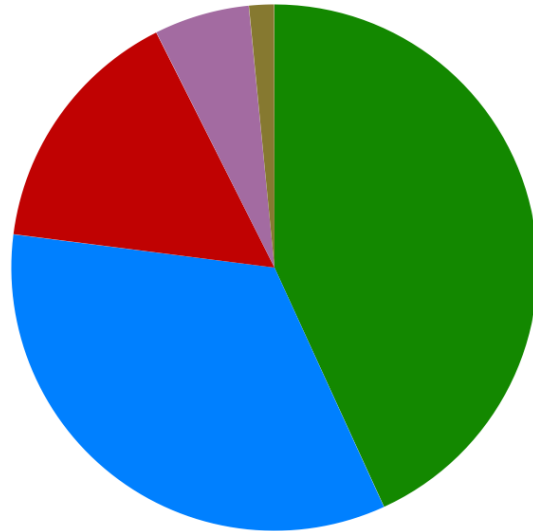
Powered by esd

The highest level of educational qualification achieved by the biggest group of Larches residents is No qualifications, which applies to 28.26%.

Health

Residents by level of health (count)

Very good health	3,238
Good health	2,539
Fairly good health	1,167
Poor health	440
Very bad health	116



Powered by esd

Larches has 440 (5.87%) residents in poor health and 116 (1.55%) residents in very bad health.

Its ranking for the number of residents in very bad health is 17 (out of 22) within Preston, 564 (out of 935) within North West, and 5,804 (out of 7,707) within England.

Glossary

Metrics used in this report are as follows:

Residents by age group (count). Source: Office for National Statistics. Dataset: Census 2011. <http://www.ons.gov.uk/ons/guide-method/census/2011/census-data/index.html>

Residents by ethnicity (count). Source: Office for National Statistics. Dataset: Census 2011. <http://www.ons.gov.uk/ons/guide-method/census/2011/census-data/index.html>

Households by tenure (count). Source: Office for National Statistics. Dataset: Census 2011. <http://www.ons.gov.uk/ons/guide-method/census/2011/census-data/index.html>

Residents by NS-Sec (count). Source: Office for National Statistics. Dataset: Census 2011. <http://www.ons.gov.uk/ons/guide-method/census/2011/census-data/index.html>

Residents by educational qualifications (count). Source: Office for National Statistics. Dataset: Census 2011. <http://www.ons.gov.uk/ons/guide-method/census/2011/census-data/index.html>

Residents by level of health (count). Source: Office for National Statistics. Dataset: Census 2011. <http://www.ons.gov.uk/ons/guide-method/census/2011/census-data/index.html>

