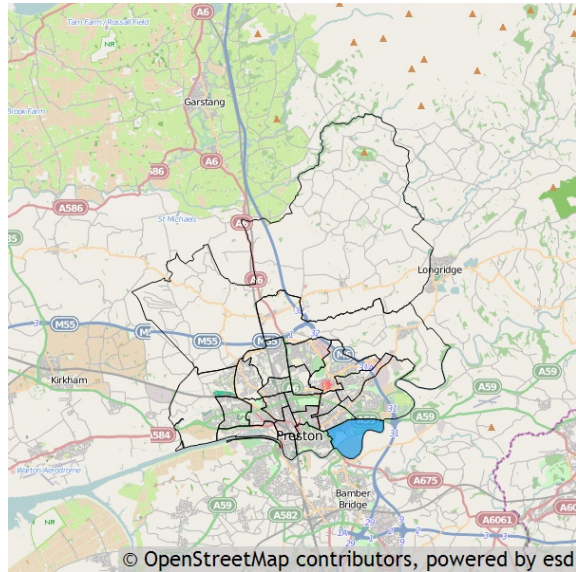


Basic facts about Fishwick

Fishwick is one of the 22 wards of Preston. It has an area of 293.91 hectares which represents 2.06% of the total local authority area of Preston.

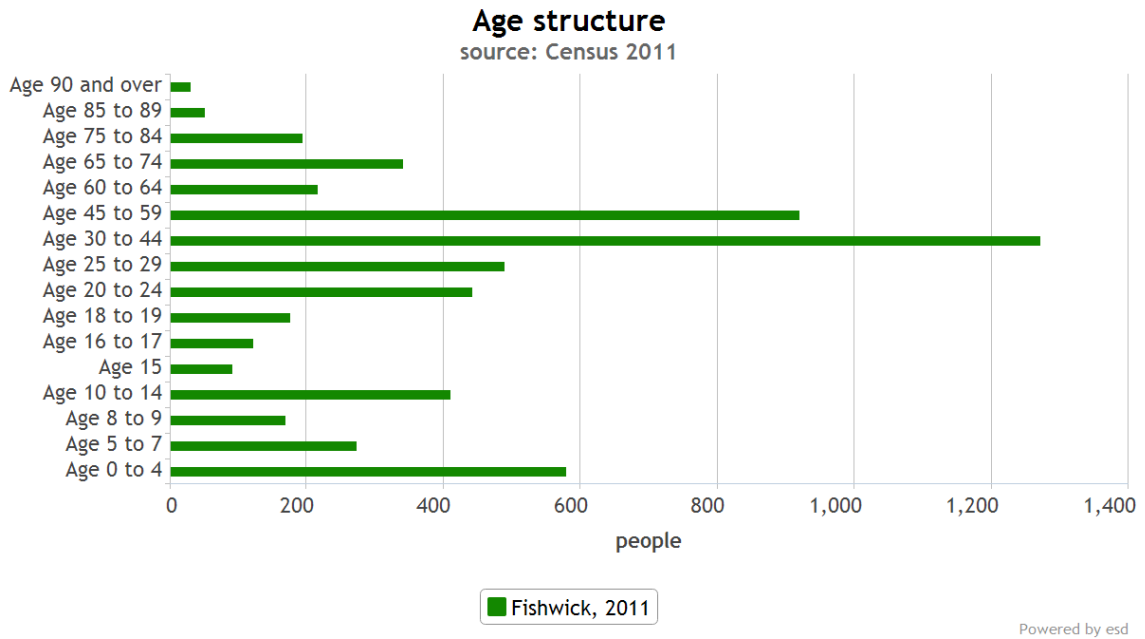


Residents

Fishwick has a resident population of 5,784 which represents 4.13% of the total local authority resident population of 140,202.

Age

The mean age of the Fishwick population is 33 years which is younger than the mean age of 37 years for residents in the whole local authority. The predominant age band is Age 30 to 44.

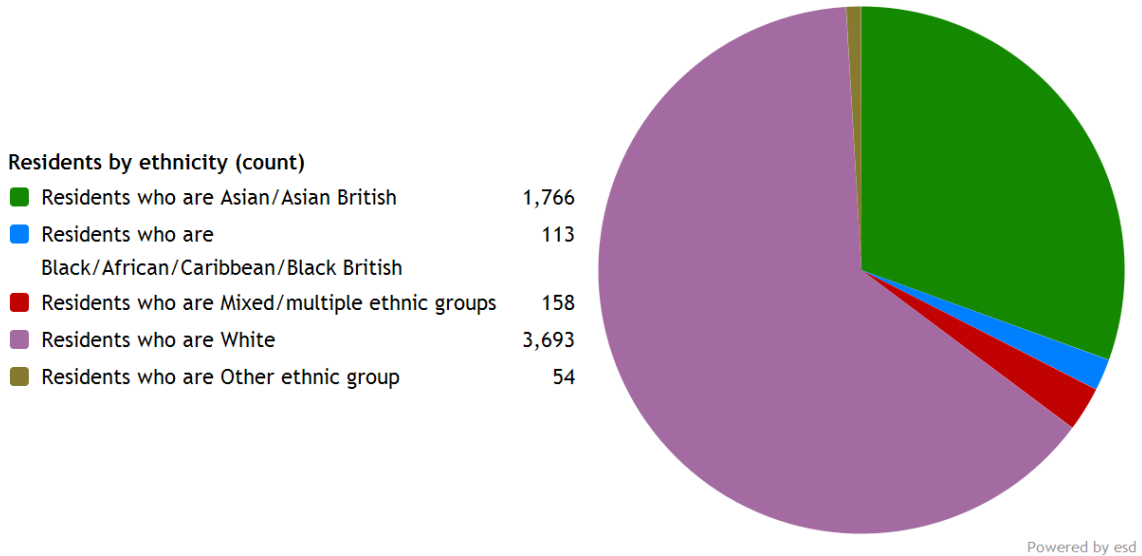


Ethnicity

The largest ethnic group is *Residents who are White* with 63.8% of the ward's population. That compares with 80.2% for the local authority as a whole, 90.2% for North West and 85.4% for the whole of England.

The second largest ethnic group is *Residents who are Asian/Asian British* with 30.5% of the ward's population. That compares with 15.5% for the local authority as a whole, 6.2% for North West and 7.8% for the whole of England.

The ethnic split of Fishwick's residents is shown below.



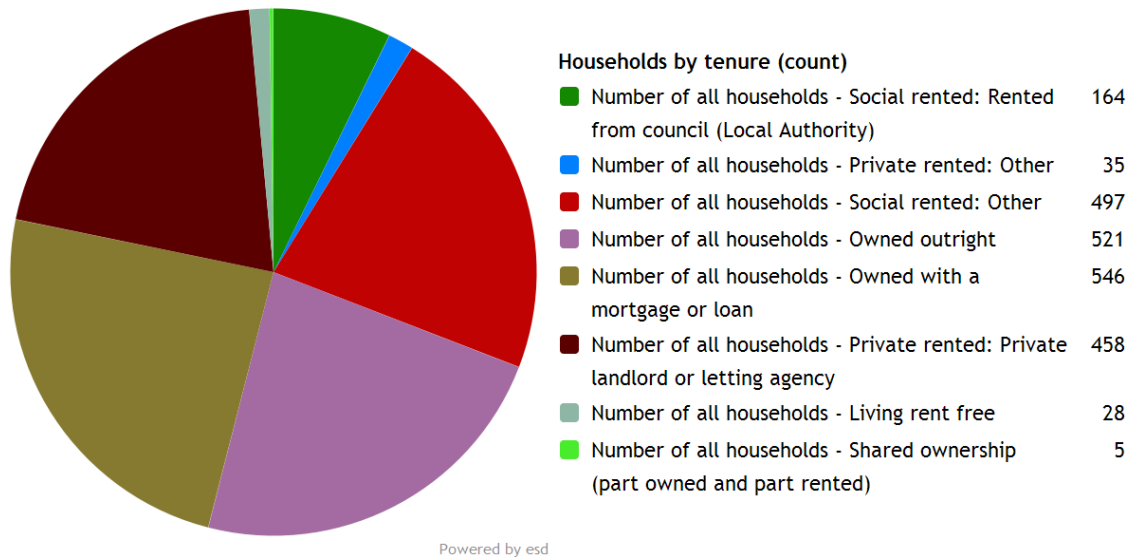
Fishwick's resident population is 50.0% female and 50.0% male.

The ward has 429 households with **dependent children aged 0 to 4**. That represents 19.03% of the ward's households.

859 households in the ward have **dependent children of all ages**. That represents 38.11% of the ward's households.

Households

Fishwick has 2,254 households, which represent 3.92% of Preston's 57,567 households. The household split by tenure is shown below.



The largest number of households lives in *Number of all households - Owned with a mortgage or loan* accommodation with 24.2% of the ward's households. That compares with 32.2% for the local authority as a whole, 33.2% for North West and 34.5% for the whole of England.

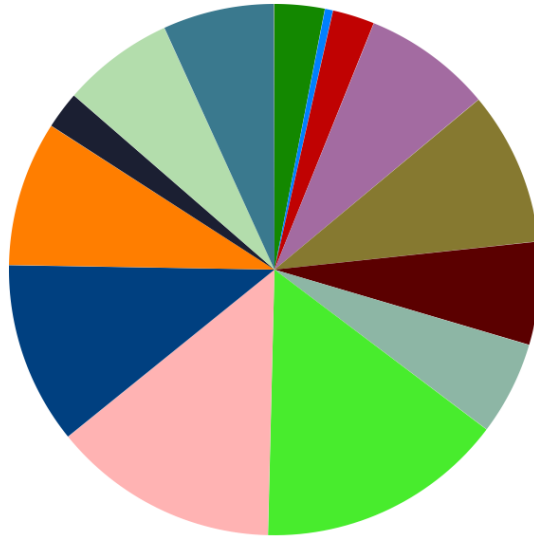
The second largest number of households lives in *Number of all households - Owned outright* accommodation with 23.1% of the ward's households. That compares with 28.4% for the local authority as a whole, 28.6% for North West and 32.8% for the whole of England.

Employment

A breakdown of Fishwick by socio-economic classification is given below.

Residents by NS-Sec (count)

NS-Sec: Higher managerial, administrative and professional	154
NS-Sec: Large employers and higher managerial and administrative	25
NS-Sec: Higher professional	129
NS-Sec: Lower managerial, administrative and professional	395
NS-Sec: Intermediate	471
NS-Sec: Small employers and own account workers	316
NS-Sec: Lower supervisory and technical	287
NS-Sec: Semi-routine occupations	762
NS-Sec: Routine occupations	694
NS-Sec: Never worked and long-term unemployed	559
NS-Sec: Never worked	445
NS-Sec: Long-term unemployed	114
NS-Sec: Not classified	343
NS-Sec: Full-time students	343
NS-Sec: Not classifiable for other reasons	0

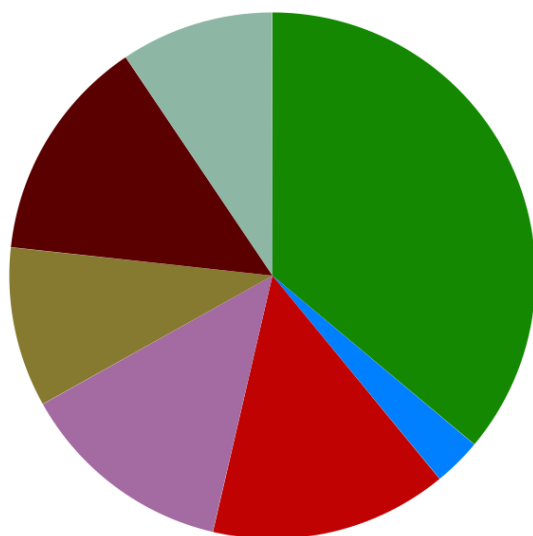


Powered by esd

The largest group is NS-Sec: Semi-routine occupations representing 19.14% of the ward's population.

147 of the lone parent households in Fishwick are not in employment.

Education



Residents by educational qualifications (count)

No qualifications	1,537
Apprenticeship	126
Level 1 qualifications	621
Level 2 qualifications	564
Level 3 qualifications	419
Level 4 qualifications and above	590
Other qualifications	401

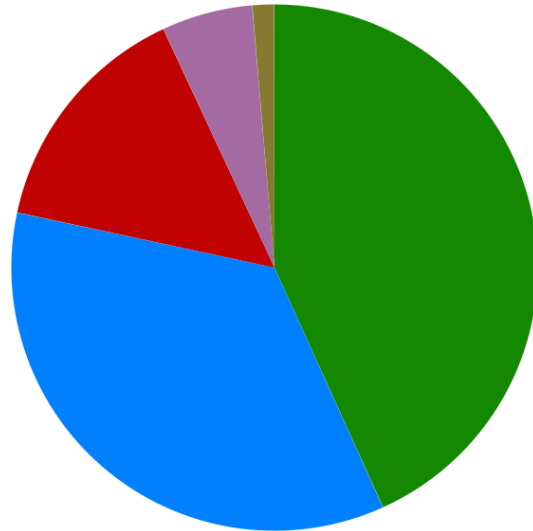
Powered by esd

The highest level of educational qualification achieved by the biggest group of Fishwick residents is No qualifications, which applies to 36.10%.

Health

Residents by level of health (count)

Very good health	2,501
Good health	2,032
Fairly good health	850
Poor health	323
Very bad health	78



Powered by esd

Fishwick has 323 (5.58%) residents in poor health and 78 (1.35%) residents in very bad health.

Its ranking for the number of residents in very bad health is 13 (out of 22) within Preston, 405 (out of 935) within North West, and 4,727 (out of 7,707) within England.

Glossary

Metrics used in this report are as follows:

Residents by age group (count). Source: Office for National Statistics. Dataset: Census 2011.
<http://www.ons.gov.uk/ons/guide-method/census/2011/census-data/index.html>

Residents by ethnicity (count). Source: Office for National Statistics. Dataset: Census 2011.
<http://www.ons.gov.uk/ons/guide-method/census/2011/census-data/index.html>

Households by tenure (count). Source: Office for National Statistics. Dataset: Census 2011.
<http://www.ons.gov.uk/ons/guide-method/census/2011/census-data/index.html>

Residents by NS-Sec (count). Source: Office for National Statistics. Dataset: Census 2011.
<http://www.ons.gov.uk/ons/guide-method/census/2011/census-data/index.html>

Census 2011. <http://www.ons.gov.uk/ons/guide-method/census/2011/census-data/index.html>

Residents by educational qualifications (count). Source: Office for National Statistics. Dataset:

Residents by level of health (count). Source: Office for National Statistics. Dataset: Census 2011.
<http://www.ons.gov.uk/ons/guide-method/census/2011/census-data/index.html>

