

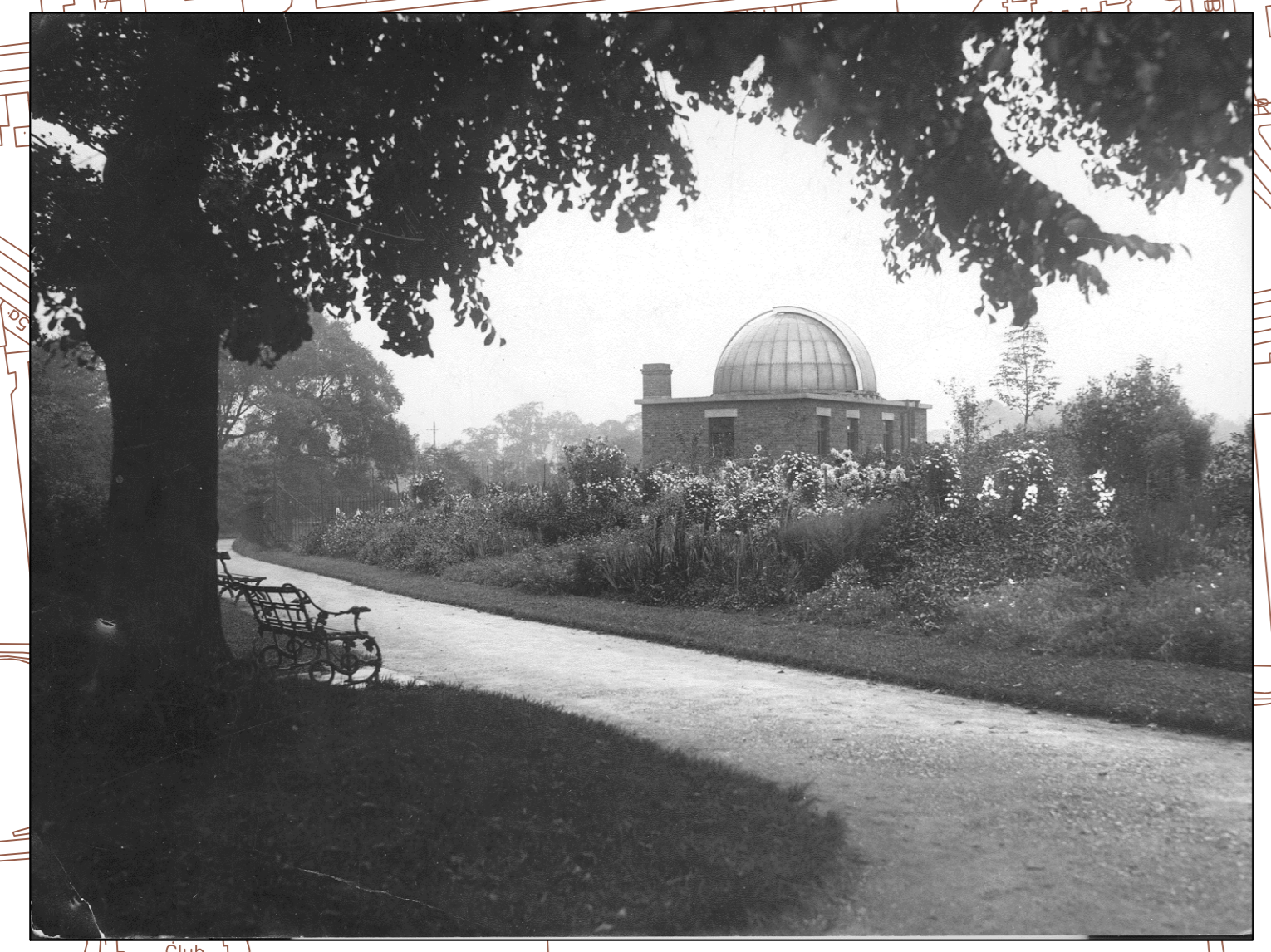
LEGEND

- Access Improvements - including Cycle Parking
- Grotto & Rockery Improvements
- Shelter improvements and addition of modern water play element
- Improvements to Serpentine lake and reinstatement of Iron Bridge
- Drainage improvements to remove areas of localised flooding
- Proposed skateboard area
- Proposed improvements to Observatory
- Main footpath improvements
- Other footpath improvements
- Consider removal of modern footpaths
- Consider reinstatement of footpaths lost from Milner's designs
- Moor Park Avenue Boundary Improvements
- Newly Drained events area - works complete
- Proposed play area improvements - outside of current HLF Bid
- Proposed tennis court improvements - outside of current HLF Bid

General whole site development to include improvements to:

- Interpretation Signage
- Events and Activities programme
- Horticultural Maintenance
- Tree stock
- Recreating horticultural features

- Newly Drained events area - works complete
- Proposed play area improvements - outside of current HLF Bid
- Proposed tennis court improvements - outside of current HLF Bid



MOOR PARK - Draft Outline Masterplan

Drawing Status:

Job Title: Moor Park Masterplan
Preston

Drwg Title: Masterplan (Outline Draft)
PRELIMINARY
DRAWING ONLY
WORKED TO

Contact Name: John Gilman
Contact Email: j.gilman@preston.gov.uk
Contact Tel No.: 01772 960034

Corporate Director of Environment: M. G. Lovatt, MCOB, MASI

Section	Landscape Design
Scale	1:1250 @A0
Date	25.2.11
Drawn By	JGC
Checked By	
Ref No.	03.003.0332
Drwg No.	L.MO.0332.003
Rev.	A

Telephone: 01772 960000
Facsimile: 01772 960762

ENVIRONMENT DIRECTORATE
Lancaster House
7779 Lancaster Road
Preston PR1 2RH