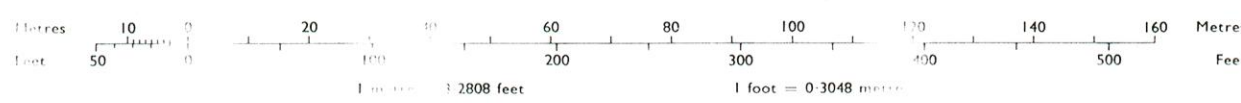


© Crown copyright 1970

CONVERSION SCALE: Metres-Feet



Made and published by the Director General of the Ordnance Survey, Southampton.

COMPILATION DATA

Levelled..... 1961  
 Boundaries..... May 1970

(a) Sep 1958  
 (b) Apr 1970

SYMBOLS

- Antiquity (site of)
- Change of boundary mering
- Culvert
- Direction of water flow
- Electricity Pylon
- ETL Electricity Transmission Line
- Triangulation Station
- Traverse Station (permanent)
- Bench Mark
- Surface Level
- Revision Point (instrumentally fixed)
- Revision Point & Bench Mark coincident

ABBREVIATIONS

- |   |                                       |   |                                 |
|---|---------------------------------------|---|---------------------------------|
| B.H. .... Beer House                      | F.St. .... Fire Station               | M.P.U. .... Mail Foot Post              | S.Br. .... Signal Bridge        |
| B.M. .... Bench Mark                      | G.P. .... Guide Post                  | M.S. .... Mile Stone                    | S.D. .... Sundial               |
| B.P. .... Boundary Post                   | G.V.C. .... Gas Valve Compound        | N.T. .... National Trust                | S.L. .... Signal Light          |
| H.S. .... Hydrant or Hydraulic            | H. .... Letter Box                    | N.T.L. .... Normal Tidal Limit          | S.L. .... Sluice                |
| C. .... Crane                             | L.B.S. .... Lifeboat Station          | N.T.S. .... National Trust for Scotland | S.P. .... Signal Post           |
| C.H. .... Club House                      | L.C. .... Level Crossing              | P. .... Pillar, Pole or Post            | S.St. .... Signal Station       |
| C. .... Chimney                           | L.G. .... Loading Gauge               | P.C. .... Public Convenience            | T.C.B. .... Telephone Call Box  |
| C. .... Captain                           | L.H. .... Lighthouse                  | P.C.B. .... Police Call Box             | T.C.P. .... Telephone Call Post |
| D.F. .... Drinking Fountain               | I.T. .... Lighting Tower              | P.H. .... Public House                  | Tk. .... Tank or Track          |
| E.P. .... Electricity Pylon or Post       | M. .... Metres                        | P.O. .... Post Office                   | Tr. .... Trough                 |
| E.T.L. .... Electricity Transmission Line | M.H.W. .... Mean High Water           | P.P. .... Police Post                   | Tr. .... Traverse Station       |
| F.A. .... Fire Alarm                      | M.H.W.S. .... Mean High Water Springs | P.T.P. .... Police Telephone Post       | V. .... Valve                   |
| F.M.P. .... Fire Alarm Pillar             | M.L.W. .... Mean Low Water            | R.H. .... Road House                    | W. .... Weighbridge             |
| F.P. .... Filter Post                     | M.L.W.S. .... Mean Low Water Springs  | R.P. .... Revision Point                | W.P. .... Wind Pump             |
| F.P.M. .... Foundation Bench Mark         | M.P. .... File or Mooring Post        | S. .... Sign                            | Wr.P. .... Water Post           |
| F.S. .... Flagstaff                       |                                       | S.B. .... Signal Post                   | W.T. .... Water Tap             |

HEIGHTS are given in METRES above the Newlyn Datum. Bench Mark Lists which may contain later levelling information, also particulars of Bench Marks to which no values have been shown, are obtainable from the Director General, Ordnance Survey.

The representation on this plan of a road, track or path is no evidence of the existence of a right of way.

The alignment of tunnels where shown is approximate.

NATIONAL GRID REFERENCE

The grid lines form part of the National Grid and are at 100 metre intervals. To give a reference defining the position of a point to within 10 metres proceed as follows:-

EXAMPLE: M in Melling's Wood

EASTING	NORTHING
Take west edge of 100 metre square in which point lies and read the figures opposite this line on the north or south margin	Take south edge of 100 metre square in which point lies and read the figures opposite this line on the east or west margin
Estimate tens of metres from grid line to the point	Estimate tens of metres from grid line to the point
568	296
6	6
5686	2966

TEN METRE REFERENCE: SD 56862966

For further information see 'An Introduction to the Projection for Ordnance Survey Maps and the National Reference System.'

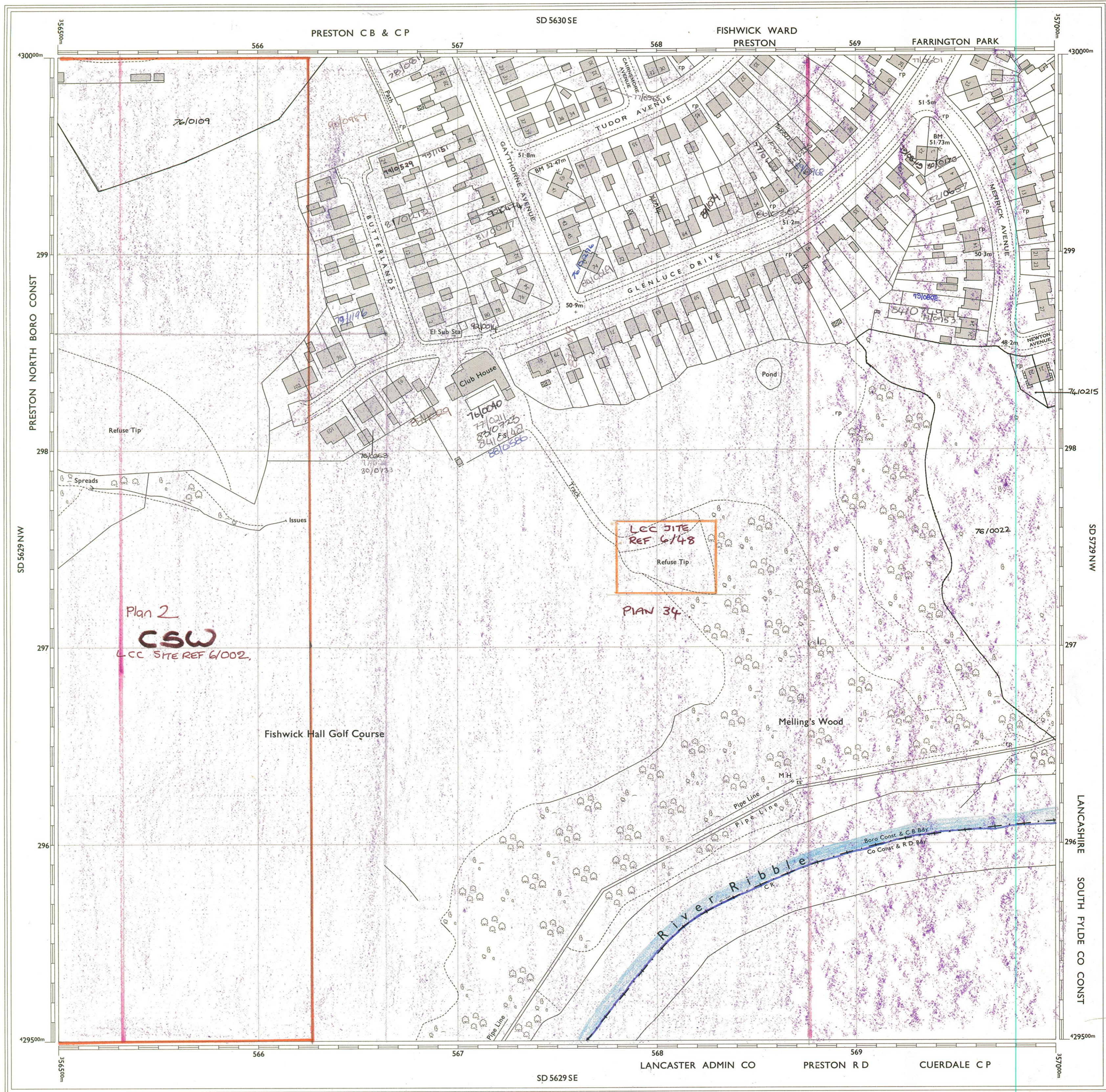
EXAMPLES OF BOUNDARY MERINGS

- |                                      |                                  |                               |
|--------------------------------------|----------------------------------|-------------------------------|
| B.B. .... Base of Bank               | C.S. .... Centre of Stream, etc. | S.R. .... Side of River, etc. |
| C.B. .... Centre of Bank             | Def. .... Defaced                | T.B. .... Top of Bank         |
| C.C.S. .... Centre of Covered Stream | E.K. .... Edge of Kerb           | Tk.H. .... Track of Hedge     |
| C.D. .... Centre of Drain, etc.      | F.F.W. .... Face of Fence, Wall  | Tk.S. .... Track of Stream    |
| C.R. .... Centre of Road, etc.       | R.H. .... Root of Hedge          | Und. .... Undefined           |



G16/2

G16/2



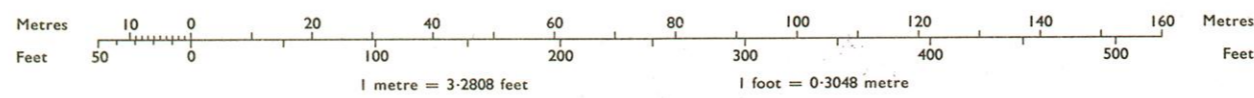
© Crown copyright 1970

CONVERSION SCALE: Metres-Feet

Made and published by the Director General of the Ordnance Survey, Southampton.

COMPILATION DATA

SYMBOLS



NATIONAL GRID REFERENCE

The grid lines form part of the National Grid and are at 100 metre intervals. To give a reference defining the position of a point to within 10 metres proceed as follows:-

Table with columns for EASTING and NORTHING, showing grid coordinates and a ten-metre reference example.

EXAMPLES OF BOUNDARY MERINGS

Table listing various boundary types and their symbols, such as Base of Bank, Centre of Stream, etc.

Levelled.....1961  
Boundaries.....May 1970

- Antiquity (site of)
- Change of boundary mering
- Culvert
- Direction of water flow
- Electricity Pylon
- Electricity Transmission Line
- Triangulation Station
- Traverse Station (permanent)
- Bench Mark
- Surface Level
- Revision Point (instrumentally fixed)
- Revision Point & Bench Mark coincident

HEIGHTS are given in METRES above the Newlyn Datum. Bench Mark Lists which may contain later levelling information, also particulars of Bench Marks to which no values have been shown, are obtainable from the Director General, Ordnance Survey.

The representation on this plan of a road, track or path is no evidence of the existence of a right of way. The alignment of tunnels where shown is approximate.

ABBREVIATIONS

- B.H. Beer House
- B.M. Bench Mark
- B.P. Boundary Post
- B.S. Boundary Stone
- C. Crane
- C.H. Club House
- Ch. Chimney
- Cn. Capstan
- D.F. Drinking Fountain
- E.P. Electricity Pillar or Post
- ETL Electricity Transmission Line
- F.A. Fire Alarm
- F.A.P. Fire Alarm Pillar
- F.B. Filter Bed, Foot Bridge
- F.B.M. Fundamental Bench Mark
- F.S. Flagstaff
- F.Sta. Fire Station
- G.P. Guide Post
- G.V.C. Gas Valve Compound
- H. Hydrant or Hydraulic
- L.B. Letter Box
- L.B.Sta. Lifeboat Station
- L.C. Level Crossing
- L.G. Loading Gauge
- L.H. Lighthouse
- L.T. Lighting Tower
- m. Metres
- M.H.W. Mean High Water
- M.H.W.S. Mean High Water Springs
- M.L.W. Mean Low Water
- M.L.W.S. Mean Low Water Springs
- M.P. Mile or Mooring Post
- M.P.U. Mail Pick-up
- M.S. Mile Stone
- N.T. National Trust
- N.T.L. Normal Tidal Limit
- N.T.S. National Trust for Scotland
- P. Pillar, Pole or Post
- P.C. Public Convenience
- P.C.B. Police Call Box
- P.H. Public House
- P.O. Post Office
- Pp. Pump
- P.T.P. Police Telephone Pillar
- R.H. Road House
- rp. Revision Point
- S. Stone
- S.B. Signal Box
- S.Br. Signal Bridge
- S.D. Sundial
- S.L. Signal Light
- Sl. Sluice
- S.P. Signal Post
- S.Sta. Signal Station
- T.C.B. Telephone Call Box
- T.C.P. Telephone Call Post
- Tk. Tank or Track
- Tr. Trough
- ts. Traverse Station
- W. Well
- W.B. Weighbridge
- Wd.P. Wind Pump
- W.P. Water Point
- W.T. Water Tap



Handwritten number: 91612