

ORDNANCE SURVEY

Scale 1:250

SD 5630 SW



PLAN SD 5629 NW

Copy of revised field sheet made on

Levelled 1961

PERMATRACE

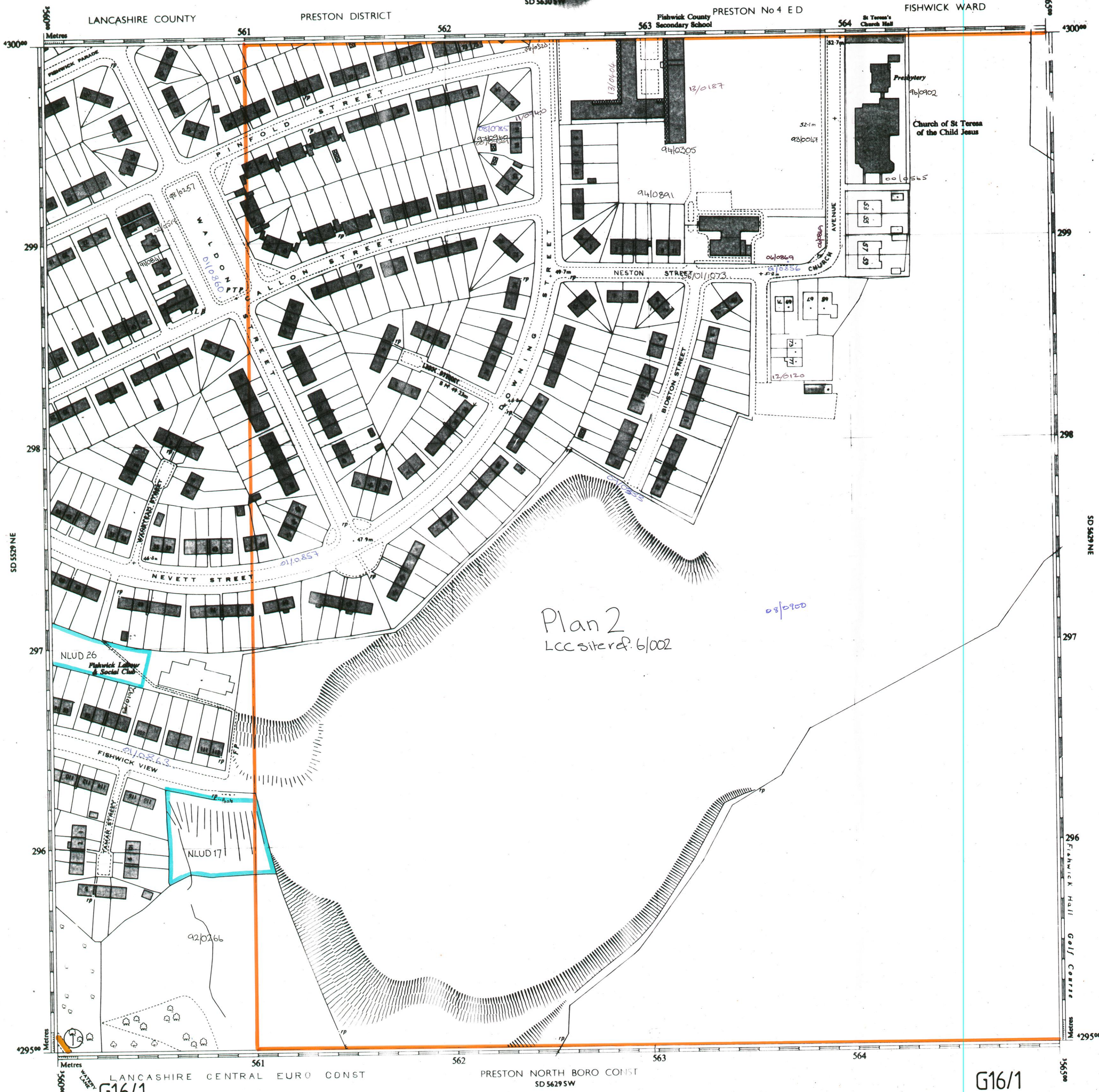
HEIGHTS IN METRES

LANCASHIRE COUNTY

PRESTON DISTRICT

Fishwick County
563 Secondary School
PRESTON No 4 E D

FISHWICK WARD



Plan 2
LCC sited 6/002

03/0900

LANCASHIRE CENTRAL EURO CONST
G16/1

PRESTON NORTH BORO CONST
SD 5629 SW

G16/1

This plan is not necessarily up to date in all details and may not have been fully checked.
Information about administrative boundaries and levelling may not be up to date.
For further information regarding this plan see O.S. leaflet No 32

Made and published by the Ordnance Survey, Southampton
© Crown copyright 19
Reproduction in whole or in part by any means is prohibited without the prior permission of the Ordnance Survey

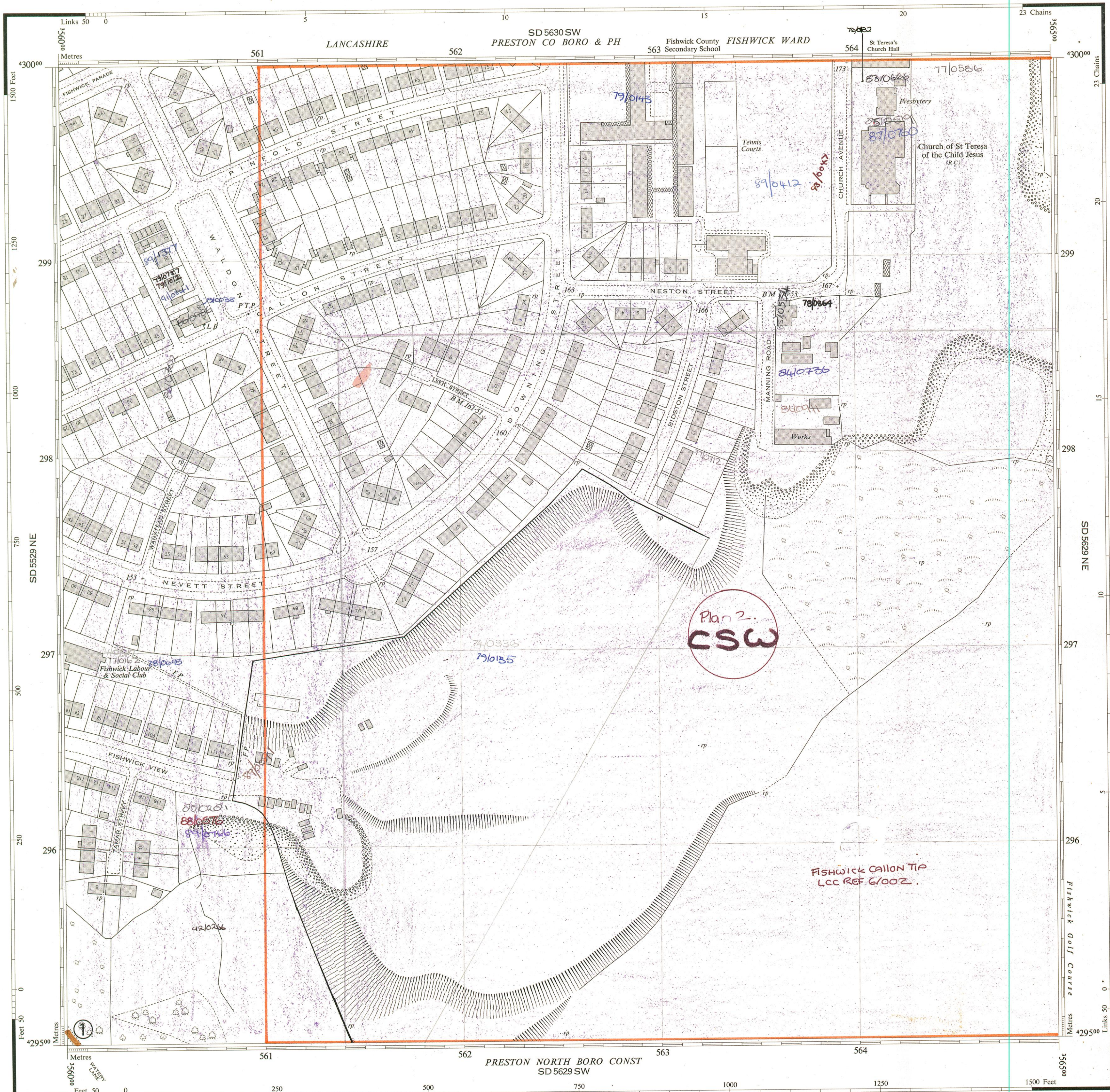
ORDNANCE SURVEY

PLAN SD 5629 NW

Scale: 1:1250 or 50.688 inches to 1 Mile

Surveyed - September 1958
Levelled - 1930

PLAN SD 5629 NW



Made and published by the Director General of the Ordnance Survey, Chessington, Surrey, 1959.

© Crown Copyright 1959. Price 4/- net.

PLAN SD 5629 NW

PLAN SD 5629 NW

G16/11

- Antiquities** (Site of)
- Change of boundary merging**
- Leveling Information**
Altitudes of Bench Marks and Surface Levels are given in feet above the Newlyn Datum.
Bench Mark lists, containing fuller and possibly later levelling information, are obtainable from the Director General, Ordnance Survey.
- Boundary Mering Abbreviations**
- | | | | | | |
|---------------------|--|-----------------------------|--|-----------------------------|----------------------------------|
| Base of Bank.....BB | Centre of Old Course of Stream.....COC | Centre of Canal, etc.....CC | Centre of Stream.....CS | Centre of Drain, etc.....CD | Centre of Covered Stream.....CCS |
| Bench Mark.....BM | Fundamental.....↑ | Surface Level.....+ | Revision Point or Traverse Station.....↑ | Triangulation Station.....△ | |
| Face of Wall.....FW | Side of River, etc.....SR | Track of Hedge.....TH | Track of Stream.....TS | Face of Fence.....FF | Defaced, Undefined.....Def, Und |

REFERENCE

For fuller information see Reference Card published separately.

NATIONAL GRID REFERENCE

The lines on the plan form part of the National Grid and are spaced at 100 metre intervals.

To give a large scale reference defining the position of a point to the nearest 10 metres proceed as follows:-

EASTING		NORTHING	
Take west edge of square in which point lies and read the figures opposite this line on NORTH and SOUTH margins	Estimate tens of metres from the grid line	Take south edge of square in which point lies and read the figures opposite this line on EAST and WEST margins	Estimate tens of metres from the grid line
561	3	299	0
5613		2990	
TEN METRE REFERENCE: SD 56132990			

For further information see "The Projection for Ordnance Survey Maps and Plans and the National Reference System"
The representation on this plan of a road, track or footpath is no evidence of the existence of a right of way.
1 square inch on this plan represents 249 of an acre on the ground.
The alignment of tunnels where shown is approximate.

- | | | |
|--|---|----------------------------------|
| Beer House.....BH | Guide Post.....GP | Revision Point.....rp |
| Bench Mark.....BM | Letter Box.....LB | Signal Box, or Post.....SB, SP |
| Boundary Post.....BP | Level Crossing.....LC | Signal Bridge.....SBr |
| Boundary Stone.....BS | Loading Gauge.....LG | Spring.....Spr |
| Capstan, Crane.....Ca, C | Mail Pick-up.....MPU | Stone.....St |
| Cart Track.....CT | Mile, or Mooring Post.....MP | Sundial.....SD |
| Drinking Fountain.....DF | Mile Stone.....MS | Tank or Track.....Tk |
| Electricity Pillar, Post or Pylon.....EIP | Pillar, Pole, Post or Pylon.....P | Telephone Call Box.....TCB |
| Fire Alarm Pillar.....FAP | Police Call Box.....PCB | Traverse Station.....ts |
| Flagstaff.....FS | Police Telephone Pillar.....PTP | Water Point, or Tap.....Wp, W, T |
| Foot Bridge.....FB | Post Office.....PO | Weighbridge.....WB |
| Footpath.....FP | Public House.....PH | Well.....W |
| Fundamental Bench Mark.....FBM | Pump.....Pp | Wind Pump.....Wp |
| High or Low Water Mark of Medium Tides.....H or LWMT | High or Low Water Mark of Ordinary Spring Tides.....H or LWMOST | |