

ORDNANCE SURVEY
SUSI (Supply of Unpublished Survey Information)

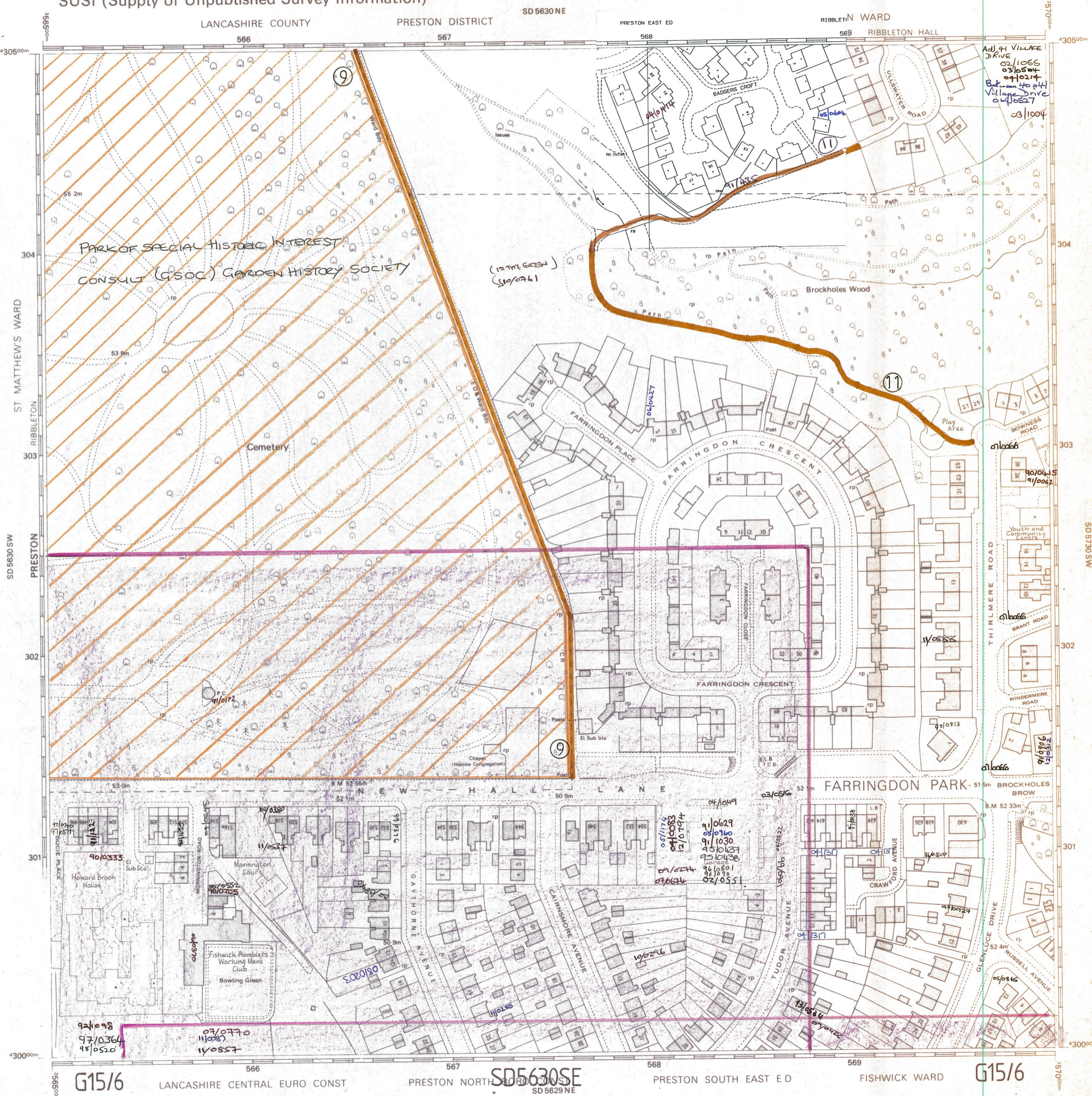
Scale 1:1250

HEIGHTS IN METRES



PLAN SD 5630 SE

Copy of Master Survey Drawing made on.....



COMPILATION DATA

(a) Oct 1958
 (b) Aug 1982

Levelled.....1961
 Boundaries..... Sep 1982

Heights are given in metres above the Newlyn Datum

Bench mark lists which may contain later levelling information, also particulars of bench marks to which no values have been shown, are obtainable from the Ordnance Survey, Southampton
 The representation on this plan of a road, track or path is no evidence of the existence of a right of way

Made and published by the Ordnance Survey, Southampton
 B © Crown copyright 1983
 Reproduction in whole or in part by any means is prohibited without the prior permission of the Ordnance Survey

S.U.S.I./Nov. 86

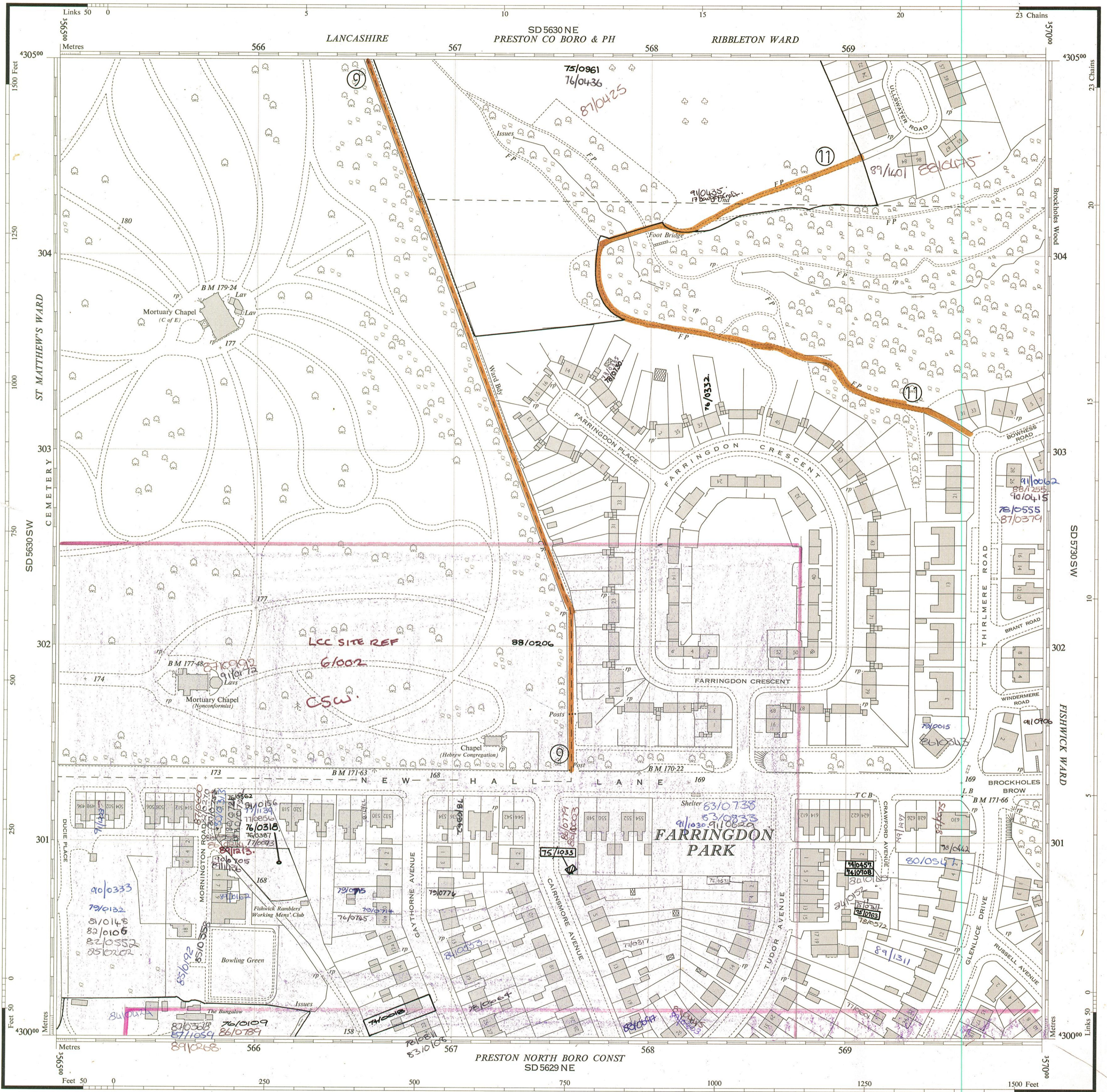
ORDNANCE SURVEY

PLAN SD 5630 SE

Scale: 1:1250 or 50.688 inches to 1 Mile

Surveyed - October 1958
Levelled - 1930

PLAN SD 5630 SE



Made and published by the Director General of the Ordnance Survey, Chessington, Surrey, 1959.

© Crown Copyright 1959. Price 4 net.

PLAN SD 5630 SE

PLAN SD 5630 SE

G1516

Antiquities..... (Site of)	Bench Mark.....	Surface Level.....
Change of boundary merging.....	" " Fundamental.....	Revision Point or Traverse Station.....
<p>Leveling Information</p> <p>Altitudes of Bench Marks and Surface Levels are given in feet above the Newlyn Datum.</p> <p>Bench Mark lists, containing fuller and possibly later levelling information, are obtainable from the Director General, Ordnance Survey.</p>		
Base of Bank..... BB	Centre of Bank..... CB	Centre of Canal, etc..... CC
Centre of Drain, etc..... CD	Centre of Covered Stream..... CCS	Face of Wall..... FW
Centre of Old Course of Stream..... COCS	Centre of Road, etc..... CR	Side of River, etc..... SR
Centre of Stream..... CS	4 feet from Root of Hedge..... 4ft RH	Track of Hedge..... TH H
Face of Fence..... FF		Track of Stream..... TS S
		Defaced, Undefined..... Def, Und

REFERENCE

For fuller information see Reference Card published separately.

NATIONAL GRID REFERENCE

The lines on the plan form part of the National Grid and are spaced at 100 metre intervals. To give a large scale reference defining the position of a point to the nearest 10 metres proceed as follows:-

EXAMPLE: No 5 CAIRNSMORE AVENUE	
EASTING	NORTHING
Take west edge of square in which point lies and read the figures opposite this line on NORTH and SOUTH margins	Take south edge of square in which point lies and read the figures opposite this line on EAST and WEST margins
Estimate tens of metres from the grid line	Estimate tens of metres from the grid line
567	300
7	6
5677	3006
TEN METRE REFERENCE: SD 56773006	

For further information see "The Projection for Ordnance Survey Maps and Plans and the National Reference System". The representation on this plan of a road, track or footpath is no evidence of the existence of a right of way. 1 square inch on this plan represents 249 of an acre on the ground. The alignment of tunnels where shown is approximate.

Beer House..... BH	Guide Post..... GP	Revision Point..... RP
Bench Mark..... BM	Letter Box..... LB	Signal Box, or Post..... SB, SP
Boundary Post..... BP	Level Crossing..... LC	Signal Bridge..... SBr
Boundary Stone..... BS	Loading Gauge..... LG	Spring..... Spr
Capstan, Crane..... Ch, C	Mail Pick-up..... MPU	Stone..... S
Cart Track..... CT	Mile, or Mooring Post..... MP	Sundial..... SD
Drinking Fountain..... DF	Mile Stone..... MS	Track or Track..... TR
Electricity Pillar, Post or Pylon..... E.P.P.	Pillar, Pole, Post or Pylon..... P	Telephone Call Box..... TCB
Fire Alarm Pillar..... FAP	Police Call Box..... PCB	Traverse Station..... TS
Flagstaff..... FS	Police Telephone Pillar..... PTP	Water Point, or Tap..... W.P.T.
Foot Bridge..... FB	Post Office..... PO	Weighbridge..... WB
Footpath..... FP	Public House..... PH	Well..... W
Fundamental Bench Mark..... FBM	Pump..... Pp	Wind Pump..... Wd Pp
High or Low Water Mark of Medium Tides..... H or LWMMT		High or Low Water Mark of Ordinary Spring Tides..... H or LWMOST