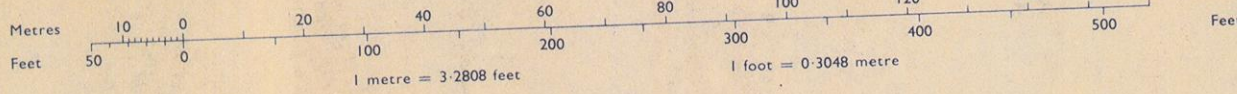


Made and published by the Director General of the Ordnance Survey, Southampton. © Crown copyright, 1970.

CONVERSION SCALE: Metres-Feet



COMPILATION DATA

Levelled 1961
Boundaries Dec 1969

SYMBOLS

- Antiquity (site of)
Change of boundary mering
Direction of water flow
Electricity Pylon
Electricity Transmission Line
Triangulation Station
Traverse Station (permanent)
Bench Mark
Surface Level
Revision Point (instrumentally fixed)
Revision Point & Bench Mark coincident

ABBREVIATIONS

- B.H. Beer House
B.M. Bench Mark
B.P. Boundary Post
B.S. Boundary Stone
C. Crane
C.H. Club House
C.M. Chimney
Cn. Capstan
D.Fn. Drinking Fountain
E.P. Electricity Pillar or Post
E.T.L. Electricity Transmission Line
F.A.P. Fire Alarm Pillar
F.B. Filter Bed, Foot Bridge
F.B.M. Fundamental Bench Mark
F.S. Flagstaff
F.Sta. Fire Station
G.P. Guide Post
G.V.C. Gas Valve Compound
H. Hydrant or Hydraulic
L.B. Letter Box
L.B.Sta. Lifeboat Station
L.C. Level Crossing
L.G. Loading Gauge
L.H. Lighthouse
L.Tw. Lighting Tower
M. Metres
M.H.W.S. Mean High Water Springs
M.L.W.S. Mean Low Water Springs
M.P. Mile or Mooring Post
M.P.U. Mail Pick-up
M.S. Mile Stone
N.T. National Trust
N.T.L. Normal Tidal Limit
N.T.S. National Trust for Scotland
P. Public Convenience
P.C.B. Police Call Box
P.H. Public House
P.O. Post Office
Pp. Pump
P.T.P. Police Telephone Pillar
R.H. Road House
R.P. Revision Point
S. Stone
S.B. Signal Box
S.Br. Signal Bridge
Sundal
S.L. Sluice
S.P. Signal Post
S.Sta. Signal Station
T.C.B. Telephone Call Box
T.C.P. Telephone Call Post
T.K. Tank or Track
T.L. Trough
Tr. Traverse Station
W. Well
W.B. Weighbridge
Wd.P. Wind Pump
Wp.Tr. Water Pump
Wr.T. Water Tap

NATIONAL GRID REFERENCE

The grid lines form part of the National Grid and are at 100 metre intervals. To give a reference defining the position of a point to within 10 metres proceed as follows—

Table with columns for EASTING and NORTHING, showing grid coordinates and a 10-metre reference example.

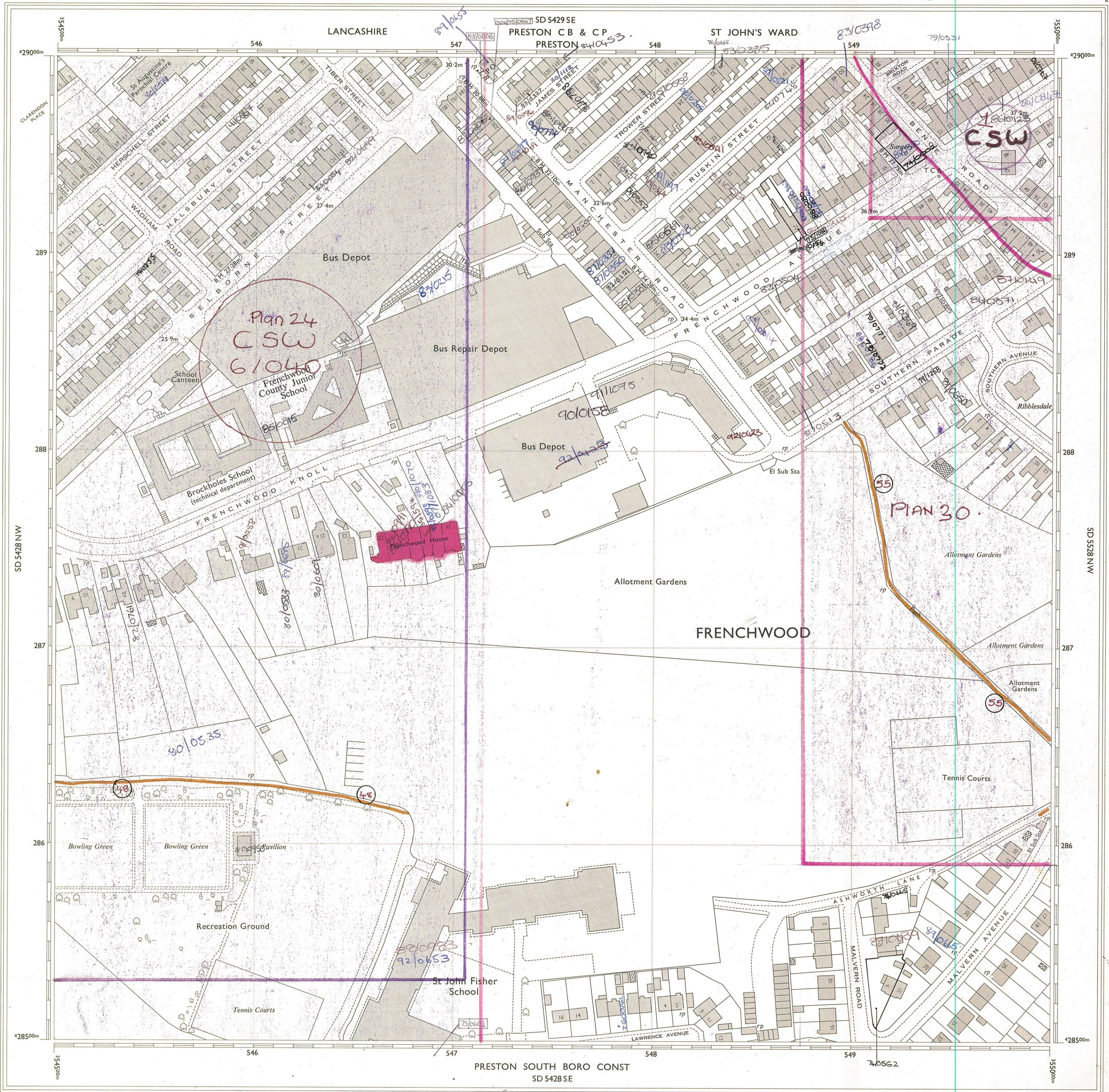
EXAMPLES OF BOUNDARY MERINGS

- B.B. Base of Bank
C.C.S. Centre of Covered Stream
C.D. Centre of Drain, etc.
C.R. Centre of Road, etc.
C.S. Centre of Stream, etc.
Def. Defaced
E.K. Edge of Kerb
F.F.W. Face of Fence, Wall
R.H. Root of Hedge
S.R. Side of River, etc.
T.B. Top of Bank
T.K. Track of Hedge
T.S. Track of Stream
Und. Undefined



F17/2

F17/2



Made and published by the Director General of the Ordnance Survey, Southampton. © Crown copyright, 1970.

CONVERSION SCALE: Metres-Feet



COMPILATION DATA

Levelled 1961
Boundaries Dec 1969

SYMBOLS

- Antiquity (site of)
Change of boundary mering
Culvert
Direction of water flow
Electricity Transmission Line
Triangulation Station
Traverse Station (permanent)
Bench Mark
Surface Level
Revision Point (instrumentally fixed)
Revision Point & Bench Mark coincident

ABBREVIATIONS

- B.H. Beer House
B.M. Bench Mark
B.P. Boundary Post
B.S. Boundary Stone
C. Crane
C.H. Club House
Chy. Chimney
Cn. Capstan
D.Fn. Drinking Fountain
E.L.P. Electricity Pillar or Post
E.T.L. Electricity Transmission Line
F.A. Fire Alarm
F.A.P. Fire Alarm Pillar
F.B. Filter Bed, Foot Bridge
F.B.M. Fundamental Bench Mark
F.S. Flagstaff
F.Sta. Fire Station
G.P. Guide Post
G.V.C. Gas Valve Compound
H. Hydrant or Hydraulic
L.B. Letter Box
L.B.Sta. Lifeboat Station
L.C. Level Crossing
L.G. Loading Gauge
L.Ho. Lighthouse
L.Twr. Lighting Tower
M. Metres
M.H.W.S. Mean High Water
M.L.W.S. Mean Low Water
M.P. Mile or Mooring Post
M.P.U. Mail Pick-up
M.S. Mile Stone
N.T. National Trust
N.T.L. Normal Tidal Limit
N.T.S. National Trust for Scotland
P. Pillar, Pole or Post
P.C. Public Convenience
P.C.B. Police Call Box
P.H. Public House
P.O. Post Office
Pp. Pump
P.T.P. Police Telephone Pillar
R.H. Road House
R.P. Revision Point
S. Stone
S.B. Signal Box
S.Br. Signal Bridge
S.D. Sundial
S.L. Signal Light
S.P. Sluice
S.P. Signal Post
S.Sta. Signal Station
T.C.B. Telephone Call Box
T.C.P. Telephone Call Post
Tr. Tank or Track
Tr. Trough
Tr. Traverse Station
W. Well
W.B. Weighbridge
Wd.P. Wind Pump
W.P. Water Point
W.T. Water Tap

NATIONAL GRID REFERENCE

The grid lines form part of the National Grid and are at 100 metre intervals. To give a reference defining the position of a point to within 10 metres proceed as follows:-

Table with columns for EASTING and NORTHING, showing grid coordinates and examples like 'F 17 2'.

EXAMPLES OF BOUNDARY MERINGS

- B.B. Base of Bank
C.S. Centre of Stream, etc.
C.C.S. Centre of Covered Stream
C.D. Centre of Drain, etc.
C.R. Centre of Road, etc.
S.R. Side of River, etc.
T.B. Top of Bank
T.H. Track of Hedge
T.F.W. Face of Fence, Wall
R.H. Root of Hedge
Und. Undefined

