

ORDNANCE SURVEY SUSI (Supply of Unpublished Survey Information)

Scale 1:2500 12.50

Copy of Master Survey Drawing made on.....

SD5313W



(1) Surveyed Jul 1968
(2) Revision Jul 1988
Administrative boundaries verified Oct 1988

Heights are given in metres above the Newlyn Datum.
More detailed levelling information is contained in bench mark lists. These lists will show the latest available values and are obtainable from the Ordnance Survey, Southampton.
The representation on this plan of a road, track or path is no evidence of the existence of a right of way.
The alignment of tunnels where shown is approximate

Made and published by Ordnance Survey, Southampton
Reproduction in whole or in part by any means is prohibited without the prior permission of Ordnance Survey

F14/7

F14/7

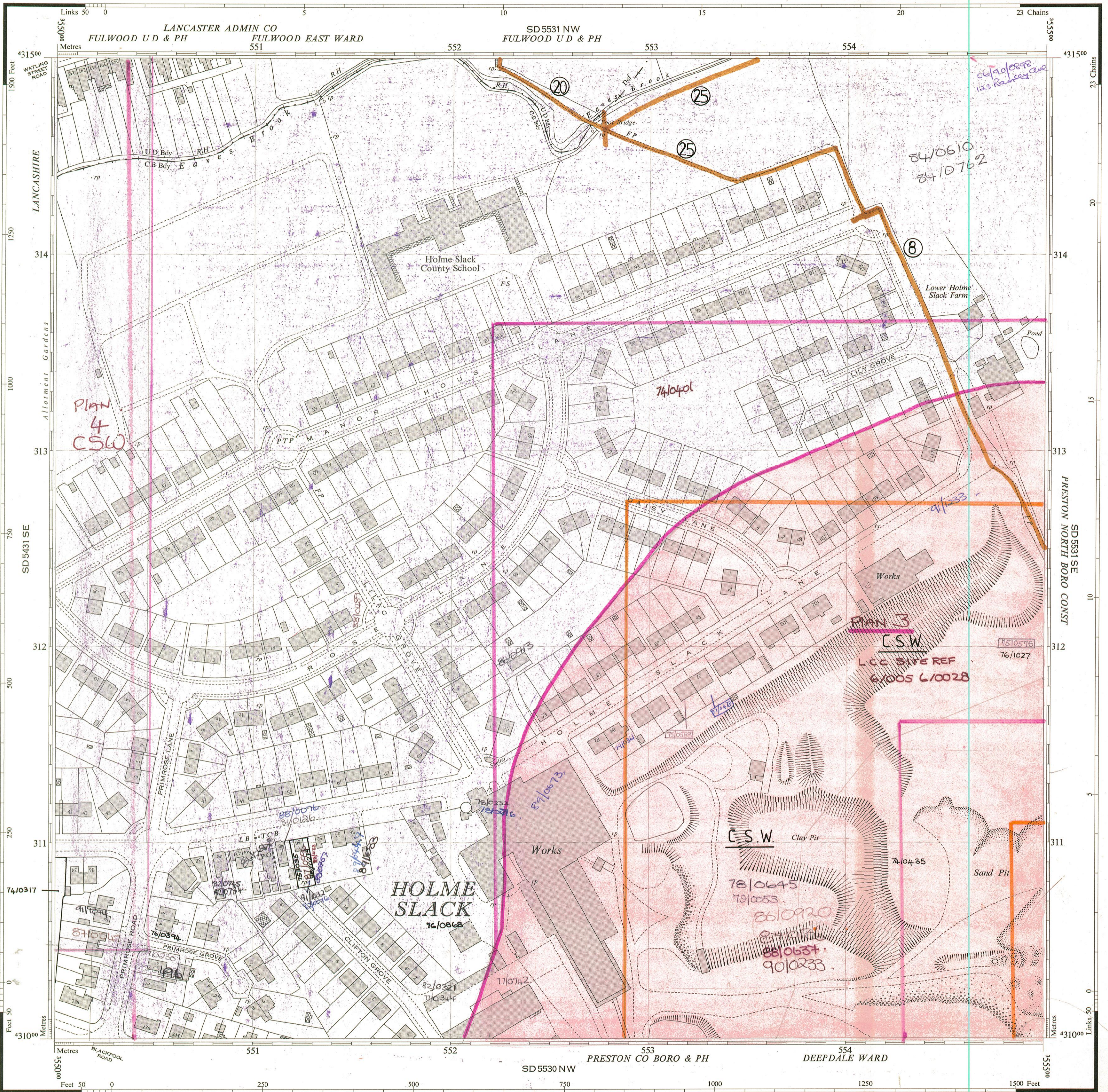
ORDNANCE SURVEY

PLAN SD 5531 SW

Scale: 1:1250 or 50.688 inches to 1 Mile

Surveyed July 1958
Levelled 1930

PLAN SD 5531 SW



Made and published by the Director General of the Ordnance Survey, Chessington, Surrey, 1959.

© Crown Copyright 1959. Price net.

PLAN SD 5531 SW

PLAN SD 5531 SW

F14/7

Antiquities (Site of)	Bench Mark " " Fundamental	Surface Level
Change of boundary mering		Revision Point or Traverse Station
		Triangulation Station
Leveling Information		
Altitudes of Bench Marks and Surface Levels are given in feet above the Newlyn Datum.		
Bench Mark lists, containing fuller and possibly later leveling information, are obtainable from the Director General, Ordnance Survey.		
Boundary Mering Abbreviations		
Base of Bank	Centre of Old Course of Stream	Face of Wall
Centre of Bank	Centre of Road, etc	Side of River, etc
Centre of Canal, etc	Centre of Stream	Track of Hedge
Centre of Drain, etc	4 feet from Root of Hedge	Track of Stream
Centre of Covered Stream	Face of Fence	Defaced, Undefined

REFERENCE

For fuller information see Reference Card published separately.

NATIONAL GRID REFERENCE

The lines on the plan form part of the National Grid and are spaced at 100 metre intervals.

To give a large scale reference defining the position of a point to the nearest 10 metres proceed as follows:-

EXAMPLE: No 89 HOLME SLACK LANE

EASTING	NORTHING
Take west edge of square in which point lies and read the figures opposite this line on NORTH and SOUTH margins	Take south edge of square in which point lies and read the figures opposite this line on EAST and WEST margins
553	312
0	0
5530	3120

TEN METRE REFERENCE: SD 55303120

For further information see "The Projection for Ordnance Survey Maps and Plans and the National Reference System"

The representation on this plan of a road, track or footpath is no evidence of the existence of a right of way.

1 square inch on this plan represents 249 of an acre on the ground.

The alignment of tunnels where shown is approximate.

Beer House	BH	Guide Post	GP	Revision Point	rp
Bench Mark	BM	Letter Box	LB	Signal Box, or Post	SB, SP
Boundary Post	BP	Level Crossing	LC	Signal Bridge	SBr
Boundary Stone	BS	Loading Gauge	LG	Spring	Spr
Capstan, Crane	Cn, C	Mail Pick-up	MPU	Stone	St
Cart Track	CT	Mile, or Mooring Post	MP	Sundial	SD
Drinking Fountain	DFn	Mile Stone	MS	Tank or Track	Tk
Electricity Pillar, Post or Pylon	EI P	Pillar, Pole, Post or Pylon	P	Telephone Call Box	TcB
Fire Alarm Pillar	FAP	Police Call Box	PCB	Traverse Station	TS
Flagstaff	FS	Police Telephone Pillar	PTP	Water Point, or Tap	Wp, T
Foot Bridge	FB	Post Office	PO	Weighbridge	WB
Footpath	FP	Public House	PH	Well	W
Fundamental Bench Mark	FMB	Pump	P	Wind Pump	Wd Pp
High or Low Water Mark of Medium Tides	H or LWMMT	High or Low Water Mark of Ordinary Spring Tides	H or LWMOST		