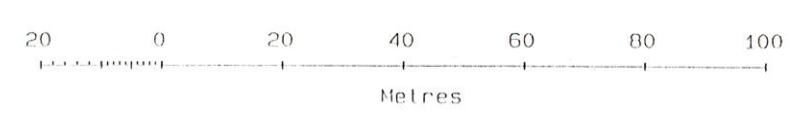


Plotted from the latest Ordnance Survey Digital Data as at 21 Jul 1994.

© Crown Copyright 1994.

Reproduction in whole or in part is prohibited without the prior permission of Ordnance Survey.

Administrative boundaries revised to Feb 1993.



Scale 1:1250

A Superplan Standard Symbols leaflet is available on request from Ordnance Survey Agents.

The representation of a road, track or path is no evidence of a right of way. Heights given in metres above the Newlyn Datum. The alignment of tunnels is approximate.

F13/5

Units: 322

SD5432SW

F13/5

Supplied by: Ordnance Survey Plot Serial Number: 15406

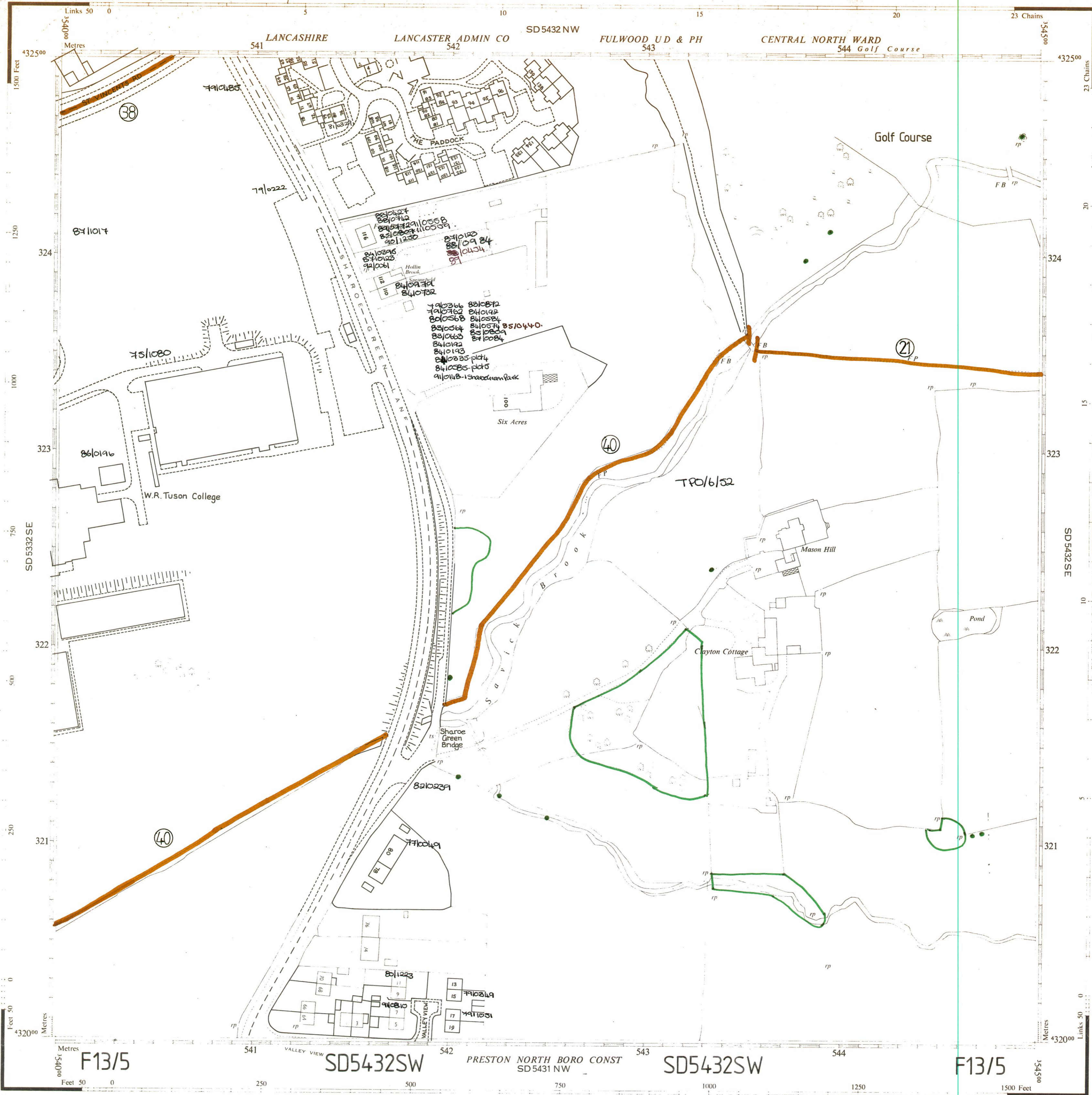
# ORDNANCE SURVEY

PLAN SD 5432 SW

Scale: 1:1250 or 50.688 inches to 1 Mile

Surveyed March 1958  
Levelled 1930.31

PLAN SD 5432 SW



Printed and Published by the Director General of the Ordnance Survey, Chessington, Surrey, 1958.

Crown Copyright reserved.

PLAN SD 5432 SW

PLAN SD 5432 SW

### REFERENCE

For fuller information see Reference Card published separately.

#### NATIONAL GRID REFERENCE

The lines on the plan form part of the National Grid and are spaced at 100 metre intervals. To give a large scale reference defining the position of a point to the nearest 10 metres proceed as follows:

EXAMPLE: S in Six Acres

**EASTING**  
Take west edge of square in which point lies and read the figures opposite this line on NORTH and SOUTH margins.  
Estimate tens of metres from the grid line

**NORTHING**  
Take south edge of square in which point lies and read the figures opposite this line on EAST and WEST margins.  
Estimate tens of metres from the grid line

TEN METRE REFERENCE: SD 54223231

For further information see "The Projection for Ordnance Survey Maps and Plans and the National Reference System". The representation on this plan of a road, track or footpath is no evidence of the existence of a right of way. 1 square inch on this plan represents 240 of an acre on the ground. The alignment of tunnels where shown is approximate.

Antiquities	Site of	Bench Mark	Fundamental	Surface Level	Revision Point or Traverse Station	Triangulation Station																			
Change of boundary meeting																									
<p><b>Leveling Information</b> Altitudes of Bench Marks and Surface Levels are given in feet above the Newlyn Datum. Bench Mark lists, containing fuller and possibly later leveling information, are obtainable from the Director General, Ordnance Survey.</p>																									
Base of Bank	BB	Centre of Old Course of Stream	COC S	Centre of Bank	CB	Centre of Canal, etc	CC	Centre of Drain, etc	CD	Centre of Covered Stream	CCS	Boundary Mering Abbreviations		Face of Wall	FW	Side of River, etc	SR	Track of Hedge	TH	Track of Stream	TS	Face of Fence	FF	Defaced, Undelimited	Det. Und

Beer House	BH	Guide Post	GP	Revision Point	rp
Boundary Post	BP	Letter Box	LB	Signal Box, or Post	SB, SP
Boundary Stone	BS	Level Crossing	LC	Signal Bridge	SBr
Capsian, Crane	Ca, C	Loading Gauge	LG	Spring	Spr
Cart Track	CT	Mail Pick-up	MPU	Stone	Stn
Drinking Fountain	DF	Mile, or Mooring Post	MP	Sundial	SD
Electricity Pillar, Post or Pylon	EIP	Mile Stone	MS	Tank or Track	TK
Fire Alarm Pillar	FAP	Pillar, Pole, Post or Pylon	P	Telephone Call Box	TCB
Flagstaff	FS	Police Call Box	PCB	Traverse Station	TS
Foot Bridge	FB	Police Telephone Pillar	PTP	Water Point, or Tap	Wt Pt, Wt T
Footpath	FP	Post Office	PO	Weighbridge	WB
Fundamental Bench Mark	FBM	Public House	PH	Well	W
		Pump	P	Wind Pump	Wd Pp
High or Low Water Mark of Medium Tides	H or LWMMT	High or Low Water Mark of Ordinary Spring Tides	F or LWMOST		