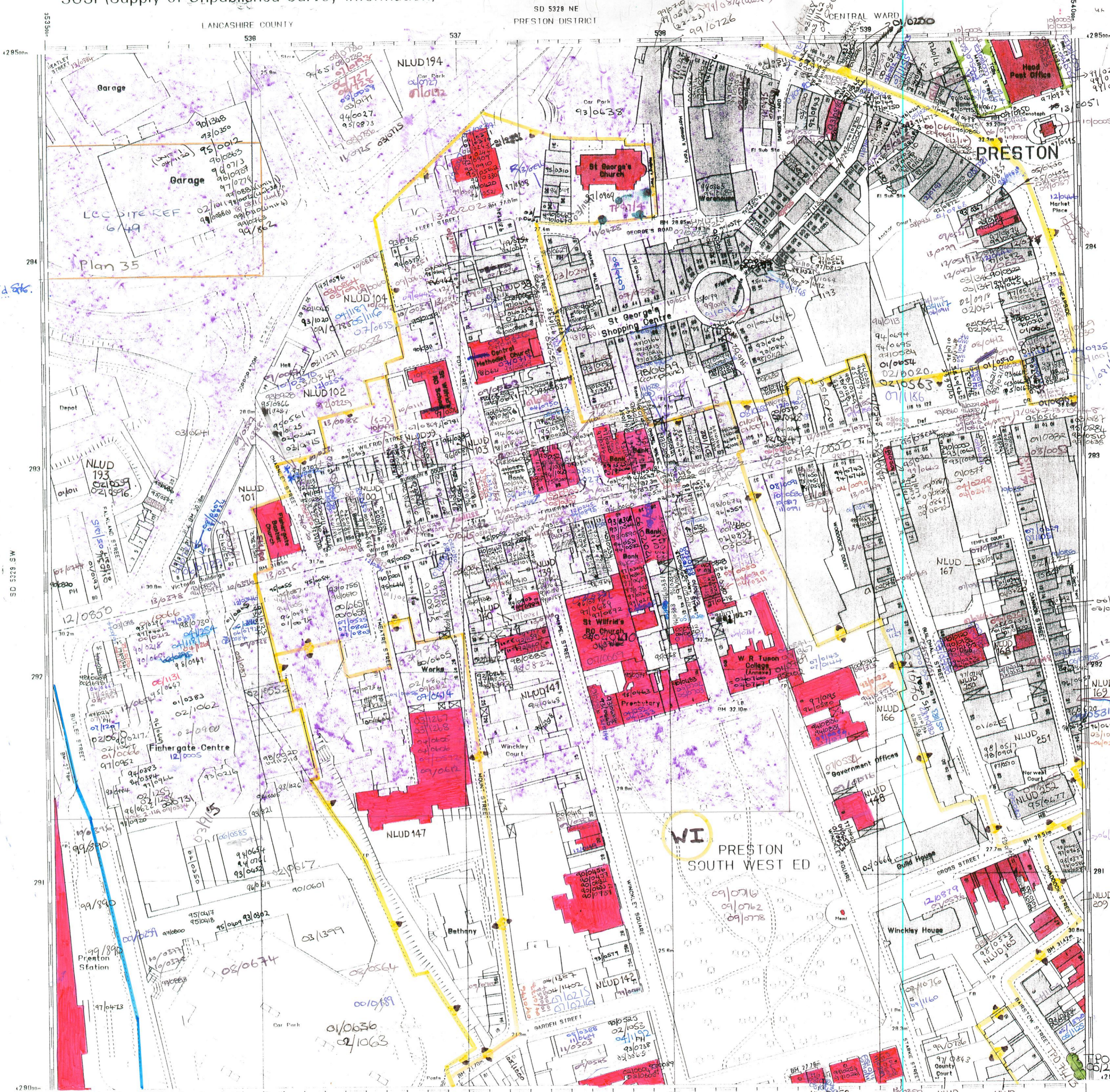


ORDNANCE SURVEY  
SUSI (Supply of Unpublished Survey Information)

Copy of Master Survey Drawing made on



15 - St. Wilfrid St.  
13/0082  
13/0083

\* 35 Fishergate  
12/0644  
12/0645

E16/8

**06/2008/0750**  
Tithebarn Regeneration  
Hybrid Application

Levelled 1960.61  
Boundaries Nov 1997

Thought map only  
This details of buildings and structures  
The representation of the physical features  
The dimensions of

Published by the Ordnance Survey, Southampton  
Reproduction in whole or in part by any means is prohibited without the prior permission of the Ordnance Survey  
© Crown copyright 1999

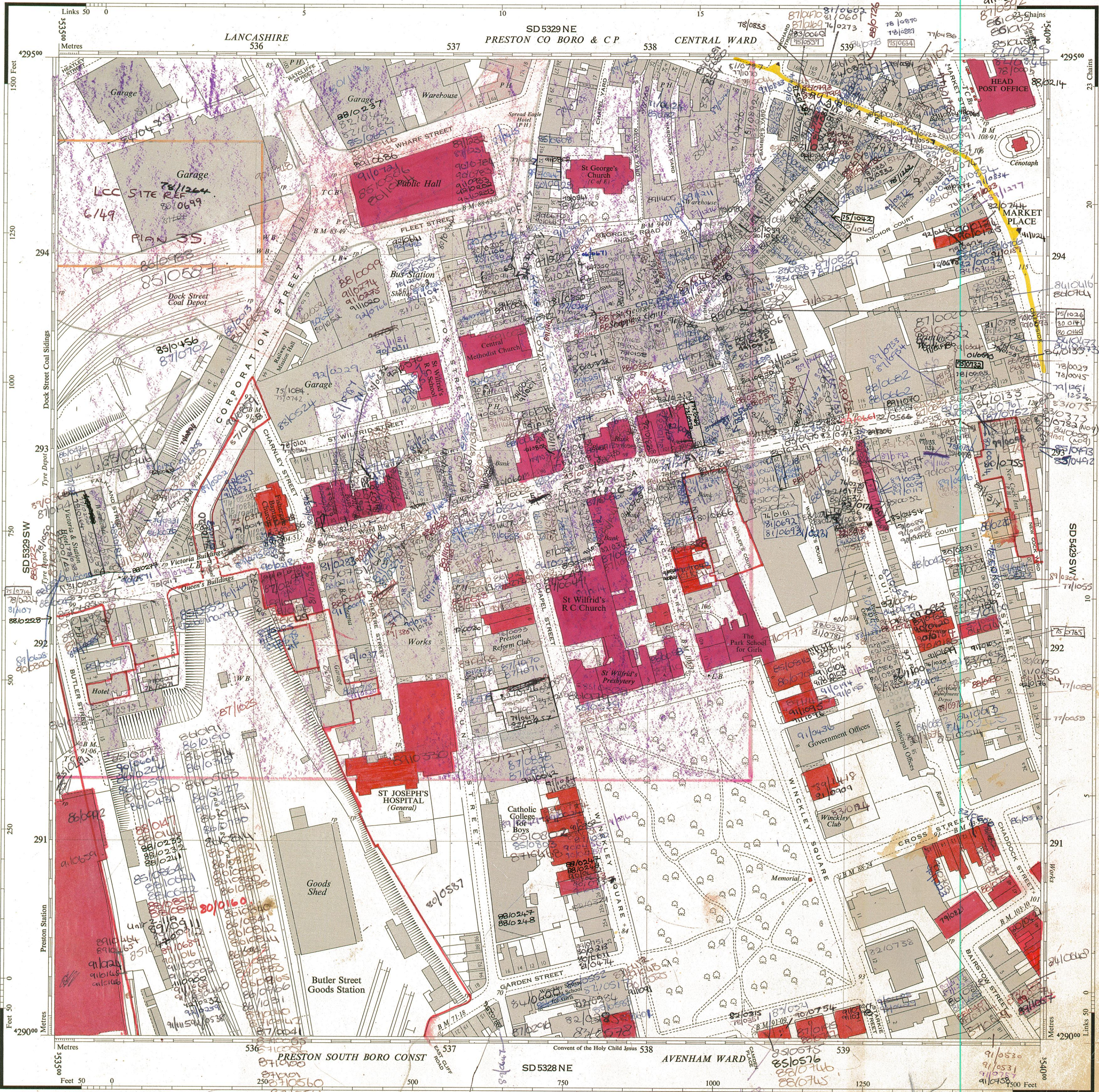
# ORDNANCE SURVEY

PLAN SD 5329 SE

Scale: 1:1250 or 50-688 inches to 1 mile

Revised.....February 1966  
Levelled.....1960.61

PLAN SD 5329 SE



Made and published by the Director General of the Ordnance Survey, Chessington, Surrey, 1966.  
Surveyed 1957, Revised 1966.

© Crown Copyright 1966.

PLAN SD 5329 SE

PLAN SD 5329 SE

### REFERENCE

For fuller information see Reference Card published separately.

### NATIONAL GRID REFERENCE

The lines on the plan form part of the National Grid and are spaced at 100 metre intervals.  
To give a large scale reference defining the position of a point to the nearest 10 metres proceed as follows:-

EASTING		NORTHING	
Take west edge of square in which point lies and read the figures opposite this line on NORTH and SOUTH margins	536	Take south edge of square in which point lies and read the figures opposite this line on EAST and WEST margins	292
Estimate tens of metres from the grid line	7	Estimate tens of metres from the grid line	7
	537		2927

TEN METRE REFERENCE: SD 53672927

For further information see "The Projection for Ordnance Survey Maps and Plans and the National Reference System"

The representation on this plan of a road, track or path is no evidence of the existence of a right of way.

1 square inch on this plan represents 249 of an acre on the ground.

The alignment of tunnels where shown is approximate.

- Antiquities (site of)
  - Change of boundary merging
  - Bench Mark
  - ..... Fundamental
  - ..... Revision Point or Traverse Station
  - ..... Triangulation Station
- Leveling Information**  
Altitudes of Bench Marks and Surface Levels are given in feet above the Newlyn Datum.  
Bench Mark lists, containing fuller and possibly later leveling information, are obtainable from the Director General, Ordnance Survey.
- Boundary Merging Abbreviations**
- ..... COCS Centre of Old Course of Stream
  - ..... CR Centre of Road, etc.
  - ..... CS Centre of Stream
  - ..... 4 feet from Root of Hedge
  - ..... FH Face of Hedge
  - ..... FF Face of Fence
  - ..... FW Face of Wall
  - ..... SR Side of River, etc.
  - ..... TK H Track of Hedge
  - ..... TK S Track of Stream
  - ..... Def, Und Defaced, Undefined
- Base of Bank** ..... BB  
**Centre of Bank** ..... CB  
**Centre of Canal, etc.** ..... CC  
**Centre of Drain, etc.** ..... CD  
**Centre of Covered Stream** ..... CCS

- Beer House ..... BH
- Bench Mark ..... BM
- Boundary Post ..... BP
- Boundary Stone ..... BS
- Capstan, Crane ..... Cn, C
- Drinking Fountain ..... DFn
- Electricity Pole or Post ..... ELP
- Electricity Transmission Line ..... ETL
- Fire Alarm Pillar ..... FAP
- Flintstaff ..... FS
- Foot Bridge ..... FB
- Fundamental Bench Mark ..... FBM
- Guide Post ..... GP
- Mean High or Low Water ..... MHW or MLW
- Letter Box ..... LB
- Level Crossing ..... LC
- Loading Gauge ..... LG
- Mail Pick-up ..... MPU
- Mile, or Mooring Post ..... MP
- Mile Stone ..... MS
- Pillar, Pole or Post ..... P
- Police Call Box ..... PCB
- Police Telephone Pillar ..... PTP
- Post Office ..... PO
- Public Convenience ..... PC
- Public House ..... PH
- Pump ..... P
- Mean High or Low Water: Springs ..... MHW or MLW
- Revision Point ..... RP
- Signal Box or Post ..... SB, SP
- Signal Bridge ..... SBr
- Spring ..... Spr
- Stone ..... S
- Sundial ..... SD
- Tank or Track ..... T
- Telephone Call Box ..... TC
- Traverse Station ..... TS
- Water Pans, or Tubs ..... W.P. or T.
- Weightbridge ..... WBr
- Well ..... W
- Wind Pump ..... WP

E1618