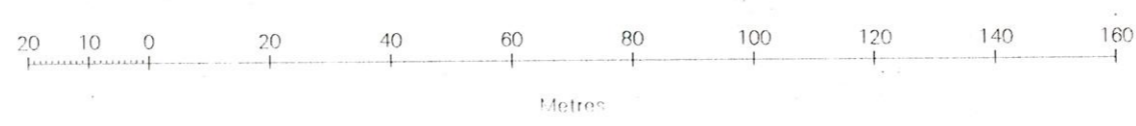
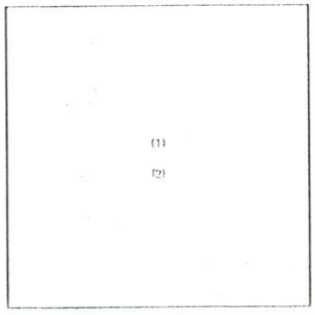


E15/6 (1) Surveyed Oct 1957 (2) Revision Apr 1989 Administrative boundaries verified May 1989

Made and published by Ordnance Survey, Southampton. © Crown Copyright 1989. E15/6

This map is a direct output from the Ordnance Survey topographic database. Further information regarding levelling, abbreviations and symbols, the National Grid and the range of services available from the topographic database may be obtained from Ordnance Survey, Romsey Road, Southampton SO9 4DH.

Heights are given in metres above the Newlyn Datum. The representation on this plan of a road, track or path is no evidence of the existence of a right of way.

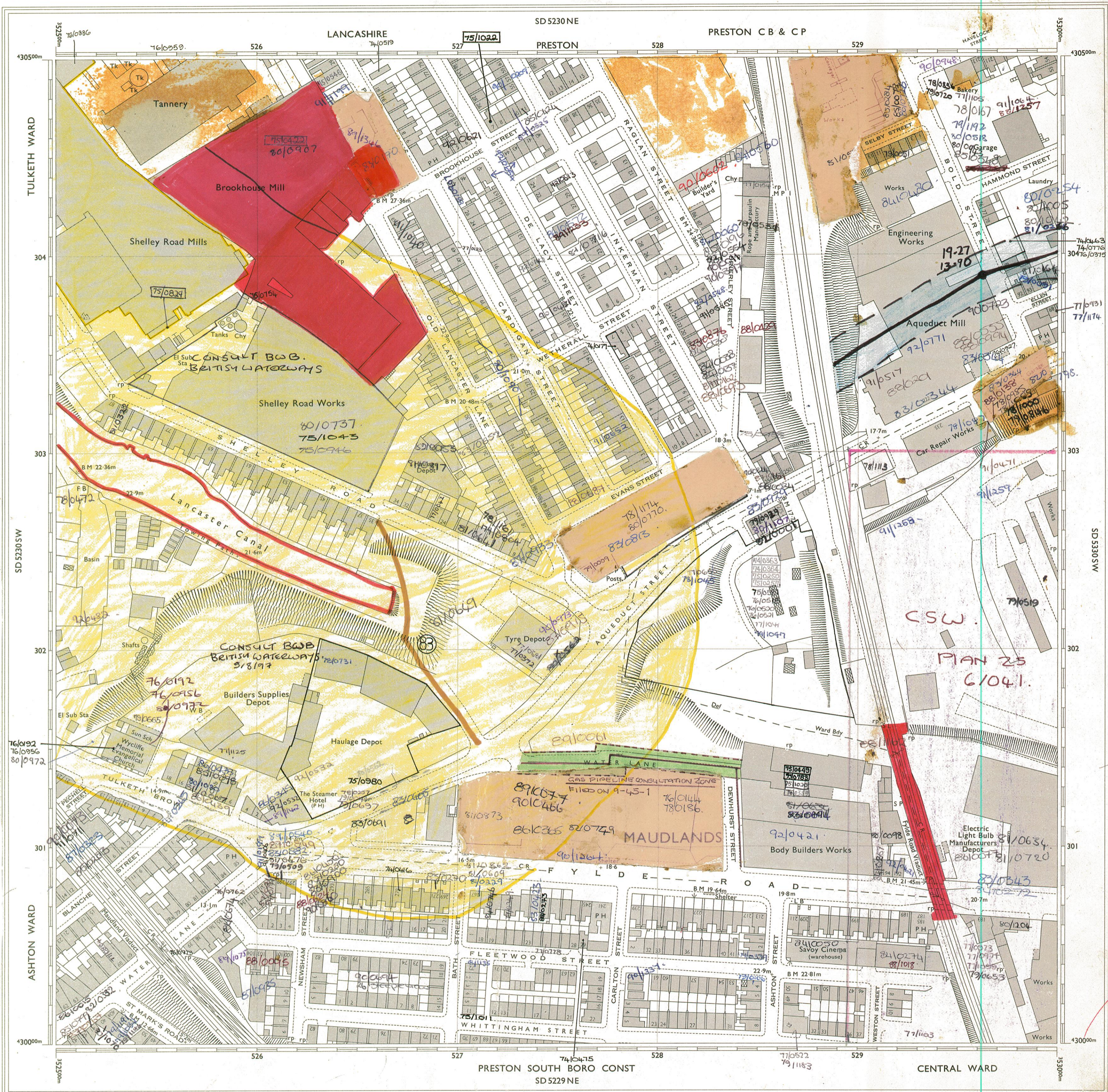


INDEX TO ADJOINING MAPS

SD5230NE	SD5230NE	SD5330NW
SD5230SW	SD5230SE	SD5330SW
SD5229NW	SD5229NE	SD5229NW

Surveys of change since the publication of this map may be available from the local Ordnance Survey office or agent.





© Crown copyright 1971

MADE AND PUBLISHED BY THE DIRECTOR GENERAL OF THE ORDNANCE SURVEY, SOUTHAMPTON.

**CONVERSION SCALE: Metres-Feet**

Metres: 0 10 20 40 60 80 100 120 140 160 180 200  
 Feet: 0 30 60 90 120 150 180 210 240 270 300 330 360 390 420 450 480 510 540 570 600

1 metre = 3.2808 feet  
 1 foot = 0.3048 metre

**COMPILED DATA**

Levelled ..... 1961  
 Boundaries ..... Aug 1970

(a) Oct 1957  
 (b) Aug 1970

**SYMBOLS**

- Antiquity (site of)
- Change of boundary mereing
- Direction of water flow
- Electricity Pylon
- Electricity Transmission Line
- Triangulation Station
- Traverse Station (permanent)
- Bench Mark
- Surface Level
- Revision Point (instrumentally fixed)
- Revision Point & Bench Mark coincident
- Culvert
- Electricity Pylon
- Electricity Transmission Line
- Triangulation Station
- Traverse Station (permanent)
- Bench Mark
- Surface Level
- Revision Point (instrumentally fixed)
- Revision Point & Bench Mark coincident

**ABBREVIATIONS**

B.H. .... Beer House	F.Sta. .... Fire Station	M.P.U. .... Mail Pick-up	S.Br. .... Signal Bridge
B.M. .... Bench Mark	G.P. .... Guide Post	M.S. .... Mile Stone	S.D. .... Sundial
B.P. .... Boundary Post	G.V.C. .... Gas Valve Compound	N.T. .... National Trust	S.L. .... Signal Light
B.S. .... Boundary Stone	H. .... Hydrant or Hydraulic	N.T.L. .... Normal Tidal Limit	S.S. .... Sluice
C. .... Crane	L.B. .... Letter Box	N.T.S. .... National Trust for Scotland	S.P. .... Signal Post
Ch. .... Club House	L.B.Sta. .... Lifeboat Station	P. .... Pillar, Pole or Post	S.Sta. .... Signal Station
Chy. .... Chimney	L.C. .... Level Crossing	P.C. .... Public Convenience	T.C.B. .... Telephone Call Box
Cn. .... Capstan	L.G. .... Loading Gauge	P.C.B. .... Police Call Box	T.C.P. .... Telephone Call Post
D.Fn. .... Drinking Fountain	L.Ho. .... Lighthouse	P.H. .... Public House	Tk. .... Tank or Track
El.P. .... Electricity Pillar or Post	L.Twr. .... Lighting Tower	P.O. .... Post Office	Tr. .... Trough
E.T.L. .... Electricity Transmission Line	M. .... Metres	Pp. .... Pump	Tr.St. .... Traverse Station
F.A. .... Fire Alarm	M.H.W.S. .... Mean High Water	P.P.T. .... Police Telephone Pillar	W. .... Wall
F.A.P. .... Fire Alarm Pillar	M.H.W.S. .... Mean High Water Springs	R.H. .... Road House	W.B. .... Weighbridge
F.B. .... Filter Bed, Foot Bridge	M.L.W. .... Mean Low Water	rp. .... Revision Point	Wd.P. .... Wind Pump
F.B.M. .... Fundamental Bench Mark	M.L.W.S. .... Mean Low Water Springs	S. .... Stone	Wt.Pt. .... Water Point
F.S. .... Flagstaff	M.P. .... Mile or Mooring Post	S.B. .... Signal Box	Wt.Tr. .... Water Tap

**NATIONAL GRID REFERENCE**

The grid lines form part of the National Grid and are at 100 metre intervals. To give a reference defining the position of a point to within 10 metres proceed as follows:-

EXAMPLE: No 13 WHITTINGHAM STREET

EASTING	NORTHING
Take west edge of 100 metre square in which point lies and read the figures opposite this line on the north or south margin.	Take south edge of 100 metre square in which point lies and read the figures opposite this line on the east or west margin.
527	300
2	30
5272	3003

**TEN METRE REFERENCE: SD 52723001**

For further information see "An Introduction to the Projection for Ordnance Survey Maps and the National Reference System."

**EXAMPLES OF BOUNDARY MERINGS**

B.B. .... Base of Bank	C.S. .... Centre of Stream, etc.	S.R. .... Side of River, etc.
C.B. .... Centre of Bank	E.D. .... Edge of Defaced	T.B. .... Top of Bank
C.C.S. .... Centre of Covered Stream	F.K. .... Face of Kerb	T.H. .... Top of Hill
C.D. .... Centre of Drain, etc.	F.F.W. .... Face of Fence Wall	T.S. .... Top of Street
C.R. .... Centre of Road, etc.	R.H. .... Root of Hedge	U. .... Underside

Imperial Equivalents for Metric Units  
 0.91m = 3ft  
 1.2m = 4ft