

ORDNANCE SURVEY

HEIGHTS IN METRES

Scale 1:1250



PLAN SD 5129 SW

SD 5129 NW

DATE OF LEVELLING 1961

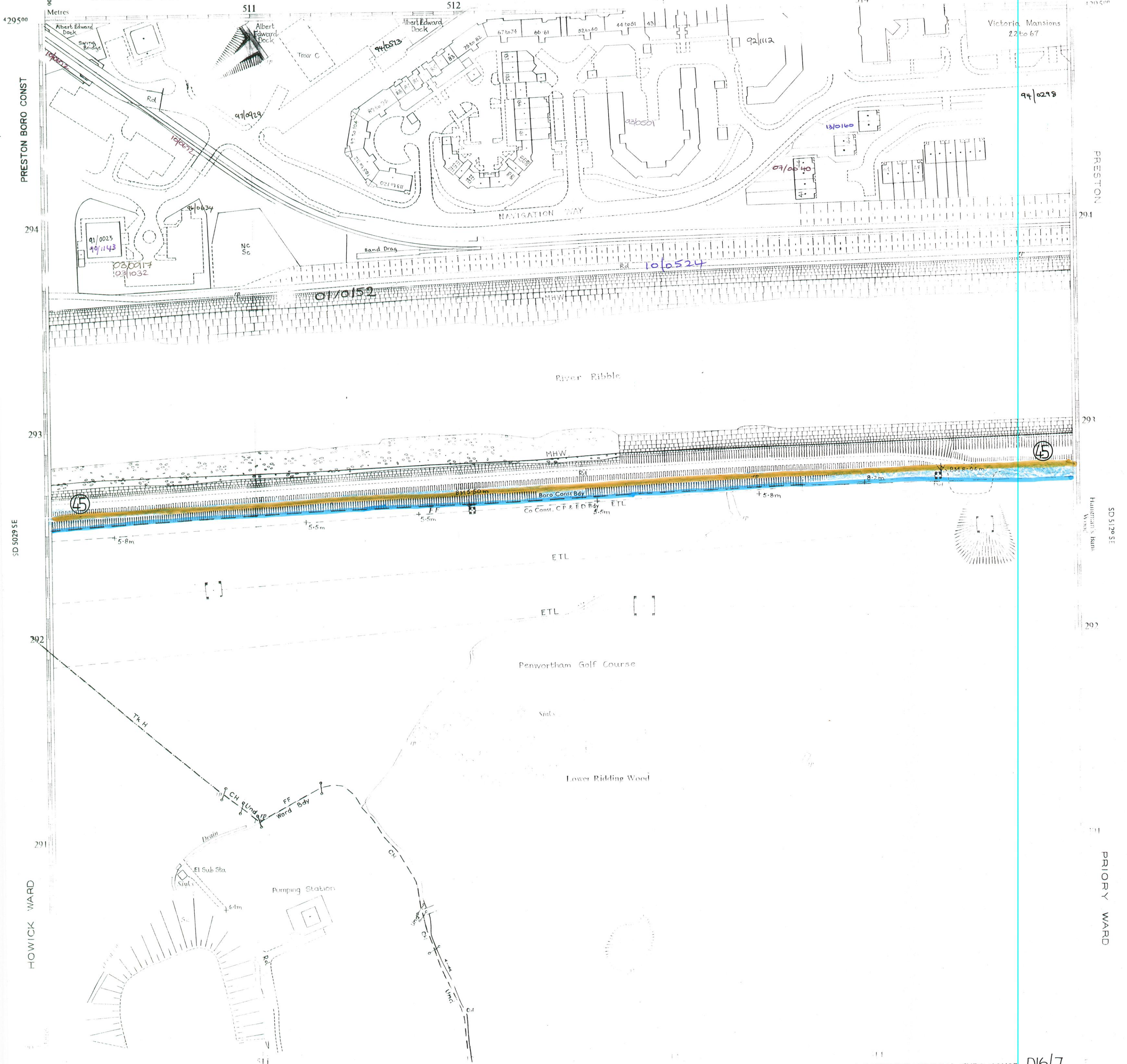
LANCASHIRE COUNTY

PRESTON DISTRICT

PRESTON WEST ED

RIVERSWAY WARD

RIVERSWAY DOCKLANDS



D16/7
Jan, 92.

Boundaries.....Dec 1990

SOUTH RIBBLE NORTH WEST ED SOUTH RIBBLE CO CONST LANCASHIRE CENTRAL EURO CONST D16/7

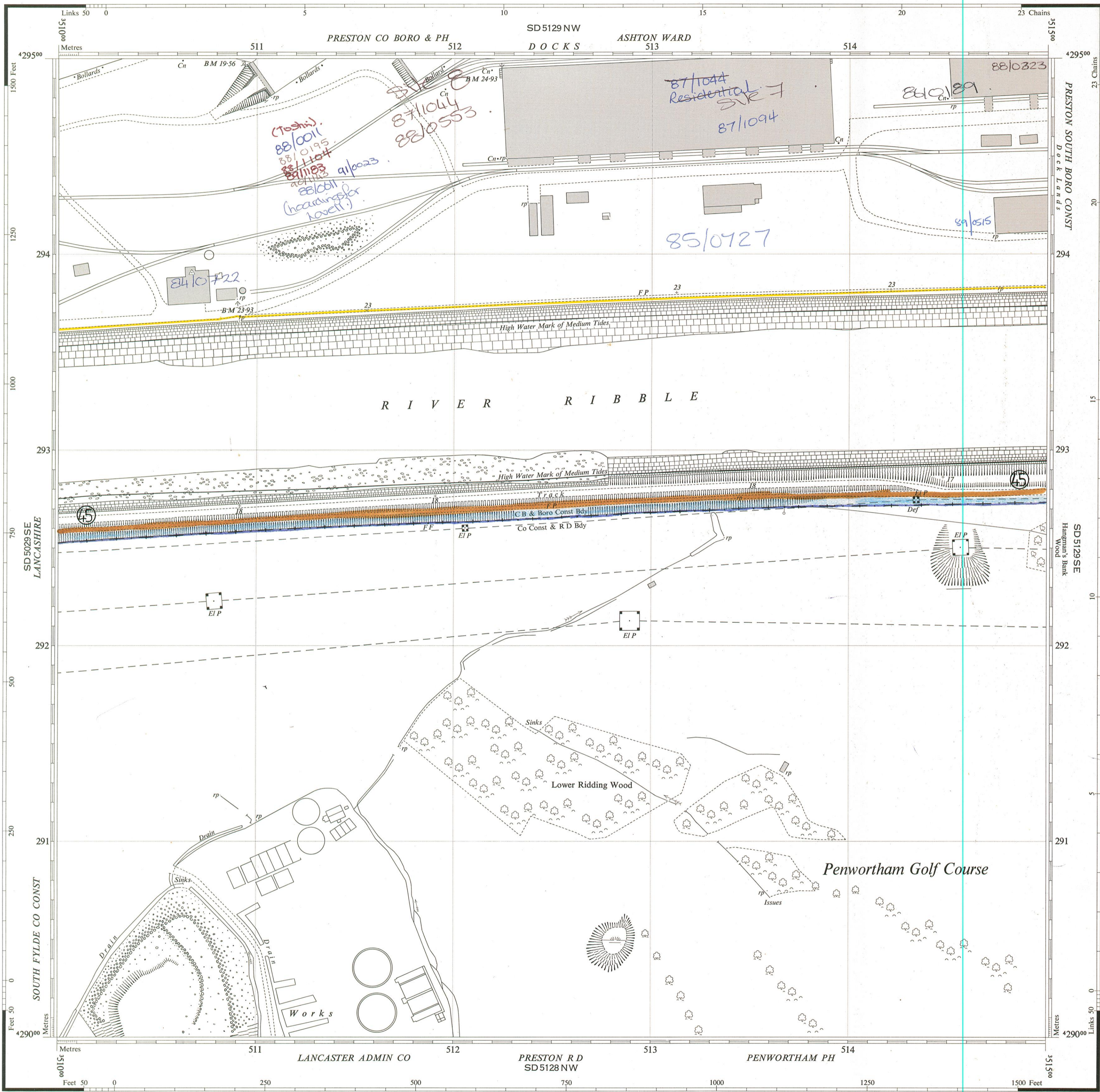
ORDNANCE SURVEY

PLAN SD 5129 SW

Scale: 1:1250 or 50.688 inches to 1 Mile

Surveyed - March 1957
Levelled - 1930

PLAN SD 5129 SW



Printed and Published by the Director General of the Ordnance Survey, Chessington, Surrey, 1958.

Crown Copyright reserved.

PLAN SD 5129 SW

REFERENCE

For fuller information see Reference Card published separately.

NATIONAL GRID REFERENCE

The lines on the plan form part of the National Grid and are spaced at 100 metre intervals. To give a large scale reference defining the position of a point to the nearest 10 metres proceed as follows:—

EXAMPLE: R in RIVER RIBBLE	
EASTING	NORTHING
Take west edge of square in which point lies and read the figures opposite this line on NORTH and SOUTH margins	Take south edge of square in which point lies and read the figures opposite this line on EAST and WEST margins
511	293
6	2
5116	2932
TEN METRE REFERENCE: SD 51162932	

For further information see "The Projection for Ordnance Survey Maps and Plans and the National Reference System" The representation on this plan of a road, track or footpath is no evidence of the existence of a right of way. 1 square inch on this plan represents 249 acres on the ground.

Antiquities (Site of)	Bench Mark	Surface Level
Change of boundary mering	" Fundamental	Revision Point or Traverse Station
		Triangulation Station
Levelling Information		
Altitudes of Bench Marks and surface levels are given in feet above the Newlyn Datum.		
Bench Mark lists, which may contain later levelling information, are obtainable from Director General, Ordnance Survey.		
Base of Bank	Boundary Mering Abbreviations	Face of Wall
Centre of Bank	Centre of Old Course of Stream	Side of River, etc
Centre of Canal, etc	Centre of Road, etc	Track of Hedge
Centre of Drain, etc	Centre of Stream	Track of Stream
Centre of Covered Stream	4 feet from Root of Hedge	Defaced, Undefined
	Face of Fence	

Beer House	Guidance Post	Revision Point
Bench Mark	Letter Box	Signal Box, or Post
Boundary Post	Level Crossing	Signal Bridge
Boundary Stone	Loading Gauge	Spring
Capstan, Crane	Mail Pick-up	Stone
Cart Track	Mile, or Mooring Post	Sundial
Drinking Fountain	Mile Stone	Tank or Track
Electricity Pillar, Post or Pylon	Pillar, Pole, Post or Pylon	Telephone Call Box
Fire Alarm Pillar	Police Call Box	Traverse Station
Flagstaff	Police Telephone Pillar	Water Point, or Tap
Foot Bridge	Post Office	Weighbridge
Footpath	Public House	Well
Fundamental Bench Mark	Pump	Wind Pump
High or Low Water Mark of Medium Tides	High or Low Water Mark of Ordinary Spring Tides	

PLAN SD 5129 SW

D1617