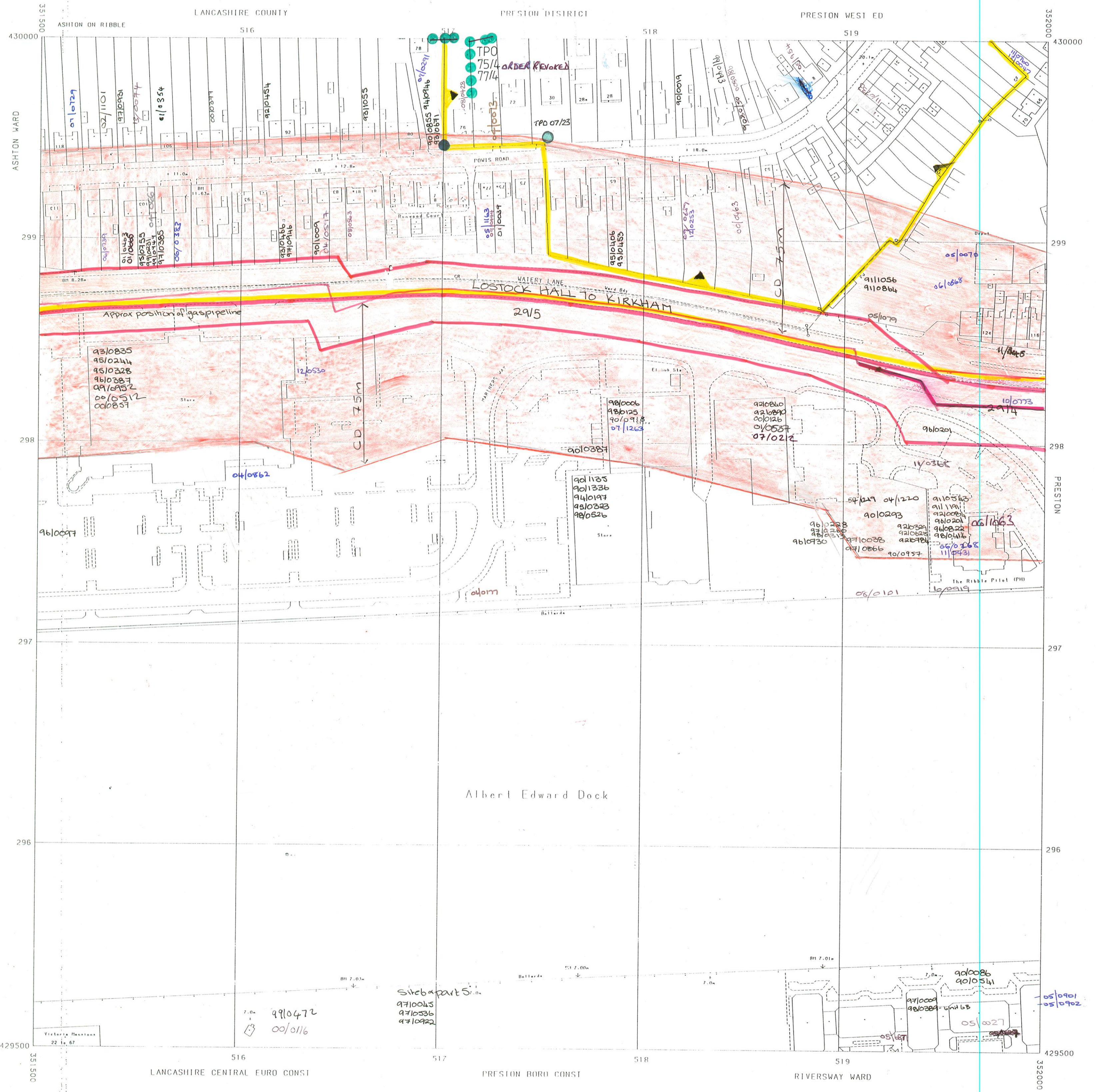


ORDNANCE SURVEY

STORAGE SCALE : 1:1250
PLOT SCALE : 1:1250
PLOT DATE : 07/01/93

PLAN SD5129NE



Albert Edward Dock

ORDER REVOKED

TP0 07/23

Approx position of gas pipeline

LOSTOCK HALL TO KIRKHAM

Since part 5
9710065
9710536
9710922

9910472
00/0116

© Crown Copyright 1993
Reproduction in whole or part by any means is prohibited
without the prior permission of the Ordnance Survey

Boundary Date Mar 1991
D16/4

D16/4

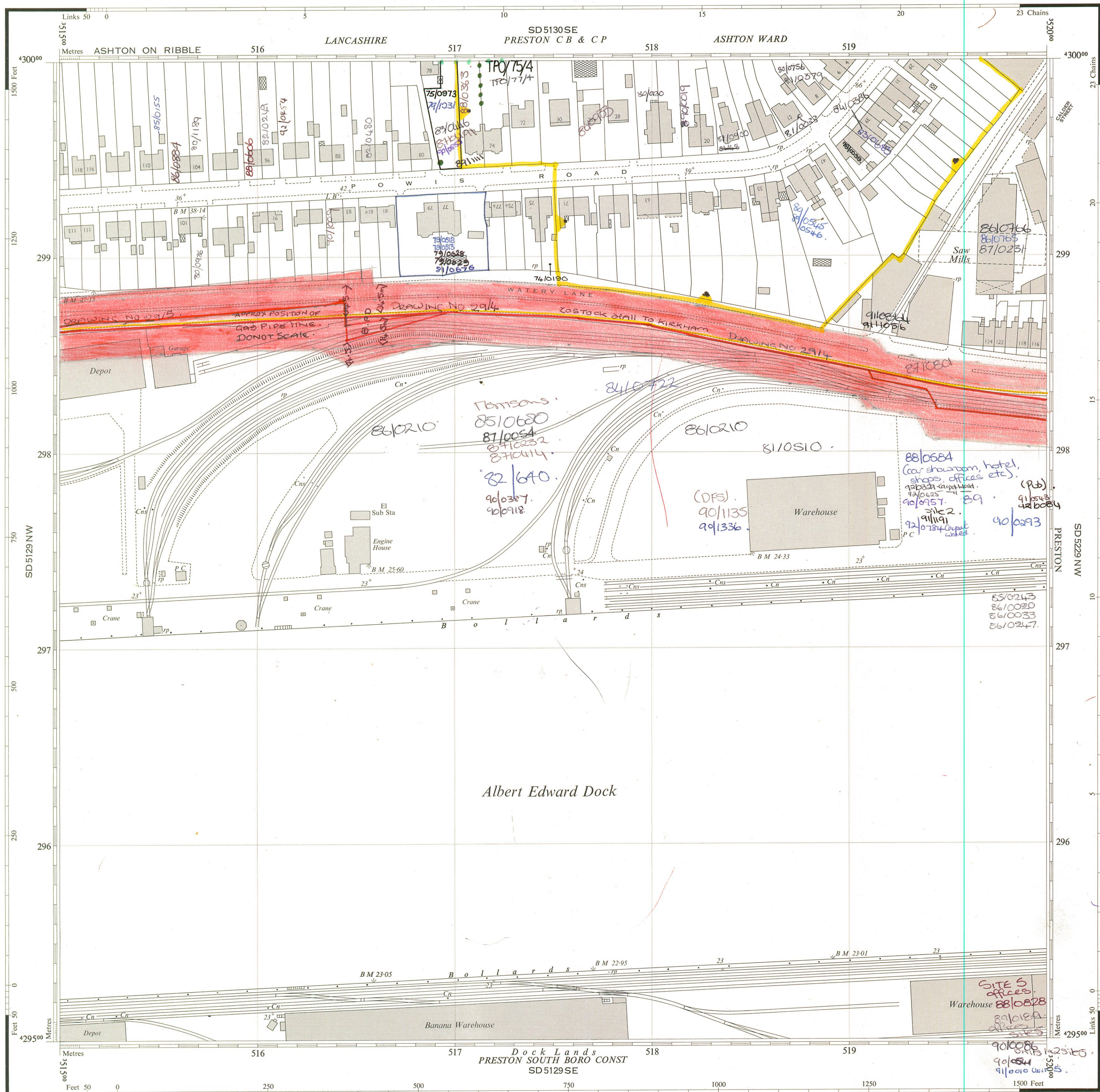
ORDNANCE SURVEY

Scale: 1:1250 or 50·688 inches to 1 mile

Revised March 1968
Levelled 1961

PLAN SD 5129 NE

PLAN SD 5129 NE



Made and published by the Director General of the Ordnance Survey, Southampton, 1968.
Surveyed 1957, Revised 1968.

© Crown Copyright 1968.

PLAN SD 5129 NE

[66] For price see current price list.

REFERENCE

For fuller information see Reference Card published separately.

NATIONAL GRID REFERENCE

The lines on the plan form part of the National Grid and are spaced at 100 metre intervals.
To give a large scale reference defining the position of a point to the nearest 10 metres proceed as follows:—

EXAMPLE: No 80 POWIS ROAD

EASTING		NORTHING	
Take west edge of square in which point lies and read the figures opposite this line on NORTH and SOUTH margins	516	Take south edge of square in which point lies and read the figures opposite this line on EAST and WEST margins	299
Estimate tens of metres from the grid line	8	Estimate tens of metres from the grid line	5
TEN METRE REFERENCE: 5168		SD 51682995	

For further information see "The Projection for Ordnance Survey Maps and Plans and the National Reference System"
The representation on this plan of a road, track or path is no evidence of the existence of a right of way.
1 square inch on this plan represents 249 of an acre on the ground.
The alignment of tunnels where shown is approximate.

- Antiquities (site of)
- Change of boundary mering
- Levelling Information
- Altitudes of Bench Marks and Surface Levels are given in feet above the Newlyn Datum.
- Bench Mark lists, containing fuller and possibly later levelling information, are obtainable from the Director General, Ordnance Survey.
- Boundary Mering Abbreviations
- Centre of Old Course of Stream... COCS
- Centre of Road, etc... CR
- Centre of Canal, etc... CC
- Centre of Drain, etc... CD
- Centre of Covered Stream... CCS
- Base of Bank... BB
- Face of Wall... FW
- Side of River, etc... SR
- Track of Hedge... TH
- Track of Stream... TH
- Defaced, Undefined... Def, Und
- Bench Mark... Fundamental
- Surface Level... Revision Point or Traverse Station... Triangulation Station
- Face of Wall... SR
- Side of River, etc... SR
- Track of Hedge... TH
- Track of Stream... TH
- Defaced, Undefined... Def, Und

- Beer House... BH
- Bench Mark... BM
- Boundary Post... BP
- Boundary Stone... BS
- Capstan, Crane, etc... Cr, C
- Drinking Fountain... DFn
- Electricity Pillar or Post... ELP
- Electricity Transmission Line... ETL
- Fire Alarm Pillar... FAP
- Flagstaff... FS
- Foot Bridge... FB
- Fundamental Bench Mark... FBM
- Guide Post... GP
- Mean High or Low Water... MHW or MLW
- Letter Box... LB
- Level Crossing... LC
- Loading Gauge... LG
- Mail Pick-up... MPU
- Mile or Mooring Post... MP
- Mile Stone... MS
- Pillar, Pole or Post... P
- Police Call Box... PCB
- Police Telephone Pillar... PTP
- Post Office... PO
- Public Convenience... PC
- Public House... PH
- Pump... Pp
- Mean High or Low Water Springs... MHS or MLWS
- Revision Point... RP
- Signal Box, or Post... SB, SP
- Signal Bridge... SB
- Spring... Spr
- Stone... S
- Sundial... SD
- Tank or Track... TK
- Telephone Call Box... TCB
- Traverse Station... TS
- Water Point, or Tap... Wp, WT
- Weighbridge... WB
- Well... W
- Wind Pump... Wp
- Mean High or Low Water Springs... MHS or MLWS

PLAN SD 5129 NE

DIG/4