

HEIGHTS IN METRES

ORDNANCE SURVEY

Scale: 1:1250 or 50.688 inches to 1 mile

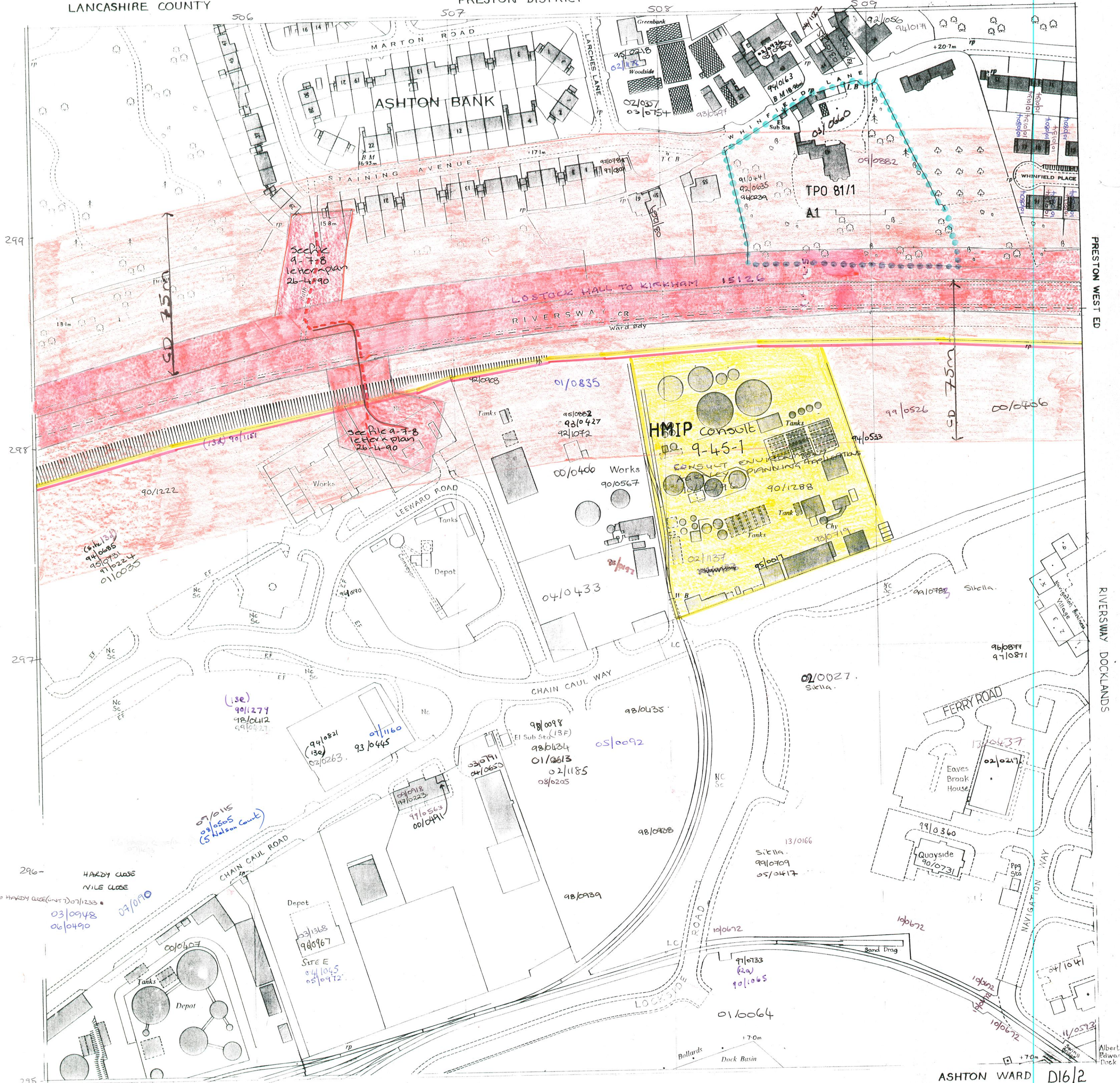
Copy of revised field sheet made on

DATE OF LEVELLING 1960,61

LARCHES WARD

LANCASHIRE COUNTY

PRESTON DISTRICT



PRESTON WEST ED

RIVERSWAY DOCKLANDS

299
298
297
296
295

D16/2 LANCASHIRE CENTRAL EURO CONST

PRESTON BORO CONST

ASHTON WARD D16/2

This plan is not necessarily up to date in all details and may not have been fully checked. Information about administrative boundaries and levelling may not be up to date. For further information regarding this plan see O.S. leaflet "Notes on Advance Revision Information Plans."

© Crown Copyright 1987
Reproduction in whole or in part by any means is prohibited without the prior permission of the Ordnance Survey.

ORDNANCE SURVEY

PLAN SD 5029 NE

Scale: 1:1250 or 50-688 inches to 1 mile

Revised.....October 1967
Levelled.....1960,61

PLAN SD 5029 NE



Made and published by the Director General of the Ordnance Survey, Southampton, 1968.
Surveyed 1957. Revised 1967.

© Crown Copyright 1968.

PLAN SD 5029 NE

[66] For price see current price list.

REFERENCE

For fuller information see Reference Card published separately.

NATIONAL GRID REFERENCE

The lines on the plan form part of the National Grid and are spaced at 100 metre intervals. To give a large scale reference defining the position of a point to the nearest 10 metres proceed as follows:-

EXAMPLE: C in CHAIN CAUL ROAD

EASTING		NORTHING	
Take west edge of square in which point lies and read the figures opposite this line on NORTH and SOUTH margins		Take south edge of square in which point lies and read the figures opposite this line on EAST and WEST margins	
507	2	296	7
Estimate tens of metres from the grid line		Estimate tens of metres from the grid line	
TEN METRE REFERENCE: SD 50722967			

For further information see "The Projection for Ordnance Survey Maps and Plans and the National Reference System". The representation on this plan of a road, track or path is no evidence of the existence of a right of way. 1 square inch on this plan represents 249 of an acre on the ground. The alignment of tunnels where shown is approximate.

- Antiquities.....(site of)
- Change of boundary mering.....
- Bench Mark.....(site of)
- Fundamental.....
- Levelling Information.....
- Altitudes of Bench Marks and Surface Levels are given in feet above the Newlyn Datum. Bench Mark lists, containing fuller and possibly later levelling information, are obtainable from the Director General, Ordnance Survey.
- Base of Bank.....BB
- Centre of Bank.....CB
- Centre of Canal, etc.....CC
- Centre of Drain, etc.....CD
- Centre of Covered Stream.....CCS
- Boundary Mering Abbreviations
- Centre of Old Course of Stream.....COCS
- Centre of Road, etc.....CR
- Centre of Stream, etc.....CS
- 4 feet from Root of Hedge.....4ft RH
- Face of Fence.....FF
- Face of Wall.....FW
- Side of River, etc.....SR
- Track of Hedge.....TH
- Track of Stream.....TS
- Defaced, Undefined.....Def, Und
- Revision Point.....RP
- Signal Box, or Post.....SB, SP
- Signal Bridge.....SBR
- Spring.....Spr
- Stone.....St
- Mile or Mooring Post.....MP
- Mile Stone.....MS
- Pillar, Pole or Post.....P
- Police Call Box.....PCB
- Police Telephone Pillar.....PTP
- Post Office.....PO
- Public Convenience.....PC
- Public House.....PH
- Pump.....P
- Mean High or Low Water.....MHW or MLW
- Mean High or Low Water Springs.....MHS or MWS

PLAN SD 5029 NE

D1612