

ORDNANCE SURVEY

Revised June 1963
1:1250 or 50-688 inches to 1 mile

PLAN SD 5130 SW

PLAN SD 5130 SW

Scale: 1:1250 or 50-688 inches to 1 mile



© Crown Copyright 1964

PLAN SD 5130 SW

Made and published by the Director General of the Ordnance Survey, Chessington, Surrey, 1964.
Successor 1987 Revised Plan

PLAN SD 5130 SW

Antiquities	Bench Mark	Surface Level	Face of Wall
Change of boundary meeting	Fundamental	Triangulation Station	Side of River, etc
			Track of Hedge
			Crack of Stream
			Defaced, Undefined
			Face of Fence
Base of Bank	Centre of Old Course of Stream	Centre of Road, etc	Centre of Stream
Centre of Canal, etc	Centre of Drain, etc	Centre of Covered Stream	

REFERENCE

For fuller information see Reference Card published separately.

NATIONAL GRID REFERENCE
The lines on the plan form part of the National Grid and are spaced at 100 metre intervals. To give a large scale reference defining the position of a point to the nearest 10 metres proceed as follows:

EXAMPLE: 513 301

EASTING
Take west edge of square in which point lies and read the figures opposite this line on NORTH and SOUTH margins. Estimate tens of metres from the grid line.

NORTHING
Take south edge of square in which point lies and read the figures opposite this line on EAST and WEST margins. Estimate tens of metres from the grid line.

TEN METRE REFERENCE: SD 51353013

For further information see "The Projection for Ordnance Survey Maps and Plans and the National Reference System". The representation on this plan of a road, track or footpath is no evidence of the existence of a right of way. A source tick on this plan represents a 240 m arc on the ground. The alignment of tunnels where shown is approximate.

Beer House	BM	Guide Post	GP	Revision Point	RP
Bench Mark	BM	Letter Box	LB	Signal Box, or Post	SB, SP
Boundary Post	BP	Level Crossing	LC	Signal Bridge	SB
Boundary Stone	BS	Loading Gauge	LG	Signal	SP
Canal, Crane	CC, C	Mail Pick-up	MPU	Stone	S
Cart Track	CT	Mile, or Mooring Post	MP	Sundial	SD
Drinking Fountain	DF	Mile Stone	MS	Tank or Track	TK
Electricity Pillar, Post or Pylon	E.P.	Pillar, Pole, Post or Pylon	P	Telephone Call Box	TCB
Fire Alarm Pillar	FAP	Police Call Box	PCB	Telephone Station	TS
Flagstaff	FS	Police Telephone Pillar	PTP	Water Point, or Tap	WP, WT, WFT
Foot Bridge	FB	Post Office	PO	Weighbridge	WB
Footpath	FP	Post Office	PH	Well	W
Footpath	FP	Post Office	PH	Wind Pump	WP
Fundamental Bench Mark	F.B.M.	High or Low Water Mark of Ordinary Spring Tides	H or L.W.M.O.S.T.		

D15/7

D1

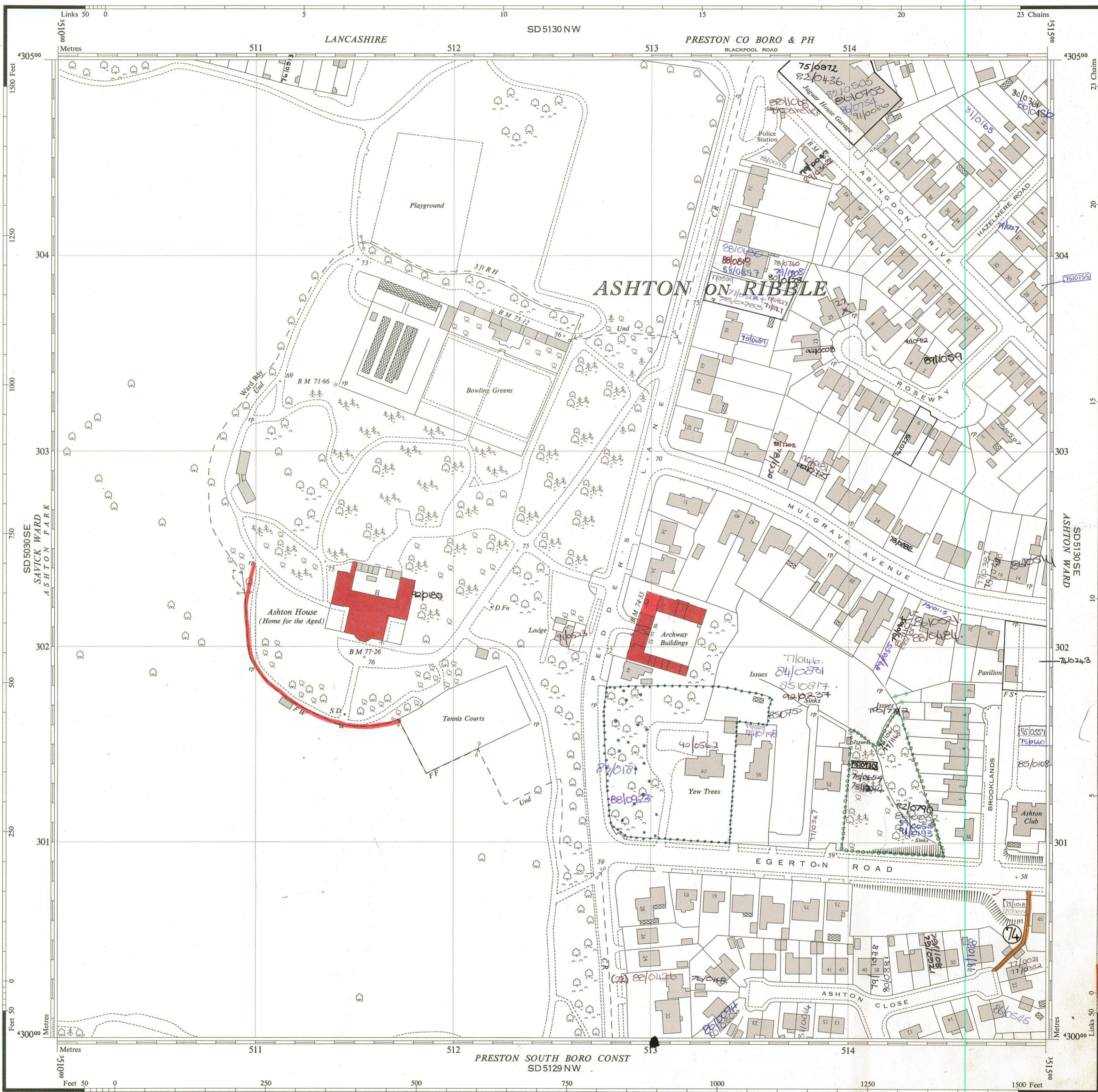
ORDNANCE SURVEY

PLAN SD 5130 SW

Scale: 1:1250 or 50-688 inches to 1 mile

Revised June 1963
Levelled 1959.61

PLAN SD 5130 S



Made and published by the Director General of the Ordnance Survey, Chessington, Surrey, 1964. Surveyed 1957. Revised 1963.

© Crown Copyright 1964. Price 7/6 net.

PLAN SD 5130 SW

REFERENCE

For fuller information see Reference Card published separately.

NATIONAL GRID REFERENCE

The lines on the plan form part of the National Grid and are spaced at 100 metre intervals. To give a large scale reference defining the position of a point to the nearest 10 metres proceed as follows:-

EXAMPLE: No 58, EGERTON ROAD

EASTING		NORTHING	
Take west edge of square in which point lies and read the figures opposite this line on NORTH and SOUTH margins	513	Take south edge of square in which point lies and read the figures opposite this line on EAST and WEST margins	301
Estimate tens of metres from the grid line	5	Estimate tens of metres from the grid line	3
TEN METRE REFERENCE: SD 51353013			

For further information see "The Projection for Ordnance Survey Maps and Plans and the National Reference System". The representation on this plan of a road, track or footpath is no evidence of the existence of a right of way.

Antiquities (site of)	Bench Mark	Surface Level
Change of boundary mering	" " Fundamental	Revision Point or Traverse Station
		Triangulation Station
Levelling Information		
Altitudes of Bench Marks and Surface Levels are given in feet above the Newlyn Datum.		
Bench Mark lists, containing fuller and possibly later levelling information, are obtainable from the Director General, Ordnance Survey.		
Base of Bank	Centre of Bank	Centre of Canal, etc
Centre of Canal, etc	Centre of Drain, etc	Centre of Covered Stream
Boundary Mering Abbreviations	Centre of Old Course of Stream	Centre of Road, etc
Centre of Stream	4 feet from Root of Hedge	Face of Fence
Face of Wall	Side of River, etc	Track of Hedge
Side of River, etc	Track of Stream	Defaced, Undefined

Beer House	Guide Post	Revision Point
Bench Mark	Letter Box	Signal Box, or Post
Boundary Post	Level Crossing	Signal Bridge
Boundary Stone	Loading Gauge	Spring
Captain, Crane	Mail Pick-up	Stone
Cart Track	Mile, or Mooring Post	Sundial
Drinking Fountain	Mile Stone	Tank or Track
Electricity Pillar, Post or Pylon	Pillar, Pole, Post or Pylon	Telephone Call Box
Fire Alarm Pillar	Police Call Box	Traverse Station
Flagstaff	Police Telephone Pillar	Water Point, or Tap
Foot Bridge	Post Office	Weighbridge
Footpath	Public House	Well
Fundamental Bench Mark	Pump	Wind Pump
High or Low Water Mark of Medium Tides		

PLAN SD 5130

D1517