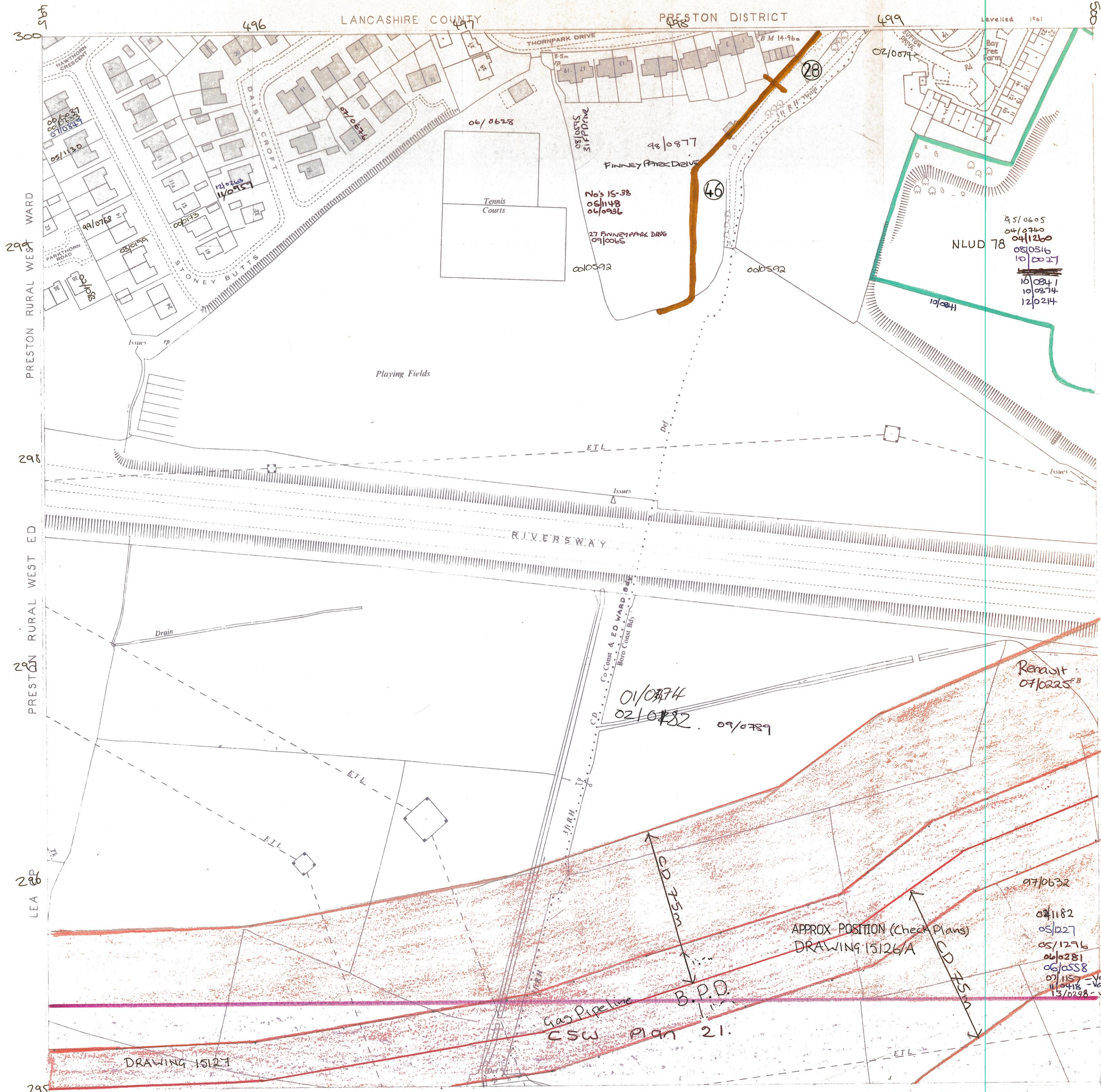


# ORDNANCE SURVEY

HEIGHTS IN METRES

Scale: 1:1250 or 50.688 inches to 1 mile

Copy of revised field sheet made on



SOUTH FYLDE CO CONST  
C16/4

LANCASHIRE CENTRAL EURO CONST

PRESTON SOUTH BORO CONST  
C16/4

This plan is not necessarily up to date in all details and may not have been fully checked. Information about administrative boundaries and levelling may not be up to date. For further information regarding this plan see O.S. leaflet "Notes on Advance Revision Information Plans".

© Crown Copyright 19  
Reproduction in whole or in part by any means is prohibited without the prior permission of the Ordnance Survey.

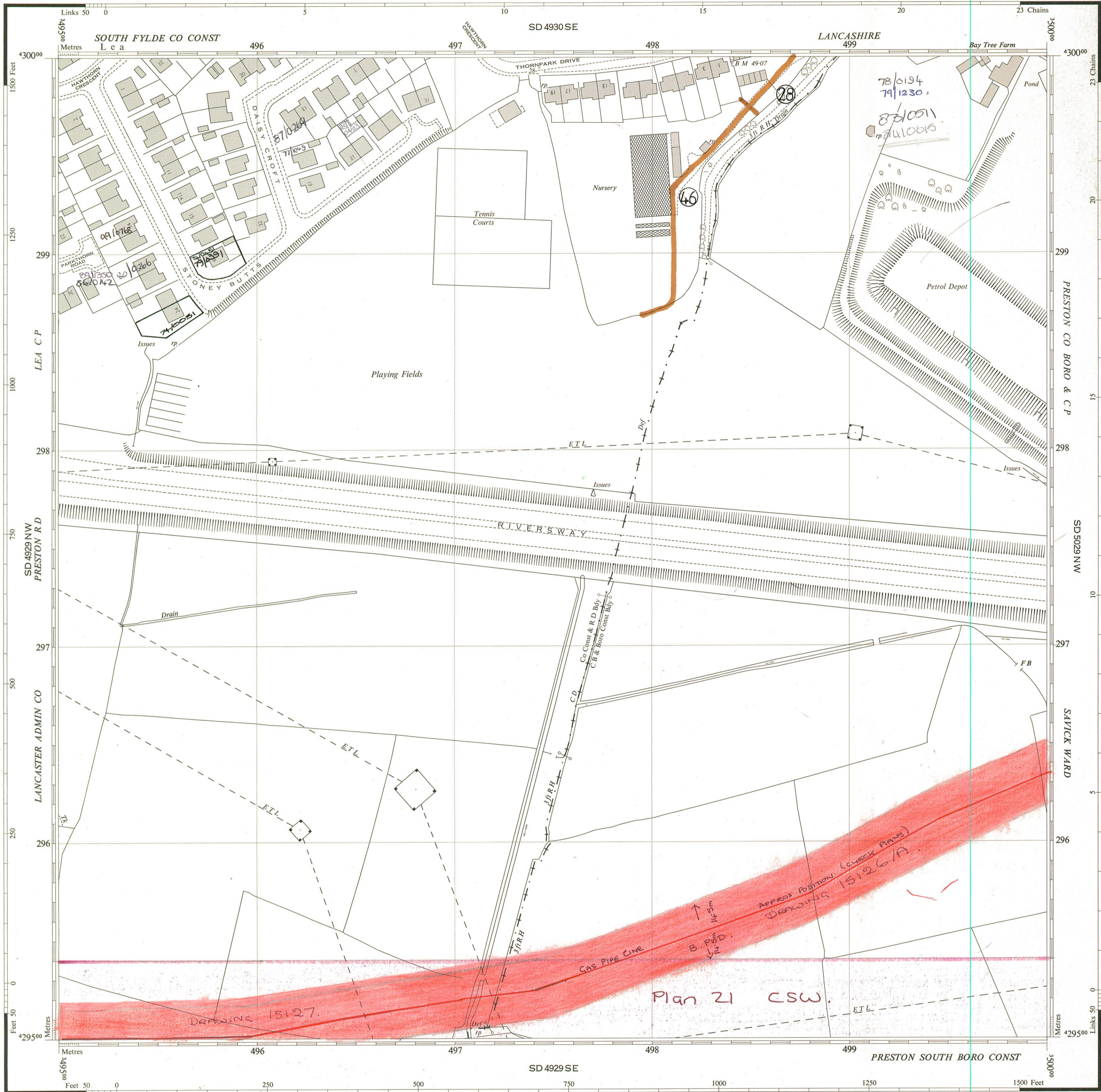
ORDNANCE SURVEY

PLAN SD 4929 NE

Scale: 1:1250 or 50.688 inches to 1 mile

Revised.....October 1967  
Levelled.....1961

PLAN SD 4929 NE



Made and published by the Director General of the Ordnance Survey, Southampton, 1968.  
Surveyed 1956. Revised 1967.

© Crown Copyright 1968.

PLAN SD 4929 NE

REFERENCE

For fuller information see Reference Card published separately.

NATIONAL GRID REFERENCE

The lines on the plan form part of the National Grid and are spaced at 100 metre intervals.  
To give a large scale reference defining the position of a point to the nearest 10 metres proceed as follows:—

EXAMPLE: N in Nursery	
EASTING	NORTHING
Take west edge of square in which point lies and read the figures opposite this line on NORTH and SOUTH margins	Take south edge of square in which point lies and read the figures opposite this line on EAST and WEST margins
Estimate tens of metres from the grid line	Estimate tens of metres from the grid line
497	299
7	3
4977	2993
TEN METRE REFERENCE: SD49772993	

For further information see "The Projection for Ordnance Survey Maps and Plans and the National Reference System"  
The representation on this plan of a road, track or path is no evidence of the existence of a right of way.  
1 square inch on this plan represents 249 of an acre on the ground.  
The alignment of tunnels where shown is approximate.

- Antiquities.....(site of)
- Change of boundary merging.....
- Bench Mark.....
- Bench Mark.....Fundamental.....
- Leveling Information
- Altitudes of Bench Marks and Surface Levels are given in feet above the Newlyn Datum.
- Bench Mark lists, containing fuller and possibly later levelling information, are obtainable from the Director General, Ordnance Survey.
- Base of Bank.....BB
- Centre of Bank.....CB
- Centre of Canal, etc.....CC
- Centre of Drain, etc.....CD
- Centre of Covered Stream.....CCS
- Boundary Merging Abbreviations
- Centre of Old Course of Stream.....COC
- Centre of Road, etc.....CR
- Centre of Stream.....CS
- 4 feet from Root of Hedge.....4ft RH
- Face of Fence.....FF
- Face of Wall.....FW
- Side of River, etc.....SR
- Track of Hedge.....TK H
- Track of Stream.....TK S
- Defaced, Undefined.....Def, Und
- Beer House.....BH
- Bench Mark.....BM
- Boundary Post.....BP
- Boundary Stone.....BS
- Capstan, Crane.....Cn, C
- Drinking Fountain.....DF
- Electricity Pillar or Post.....EP
- Electricity Transmission Line.....ETL
- Fire Alarm Pillar.....FAP
- Flagstaff.....FS
- Foot Bridge.....FB
- Fundamental Bench Mark.....FBM
- Guide Post.....GP
- Mean High or Low Water.....MHW or MLW
- Letter Box.....LB
- Level Crossing.....LC
- Loading Gauge.....LG
- Mail Pick-up.....MPU
- Mile, or Mooring Post.....MP
- Mill Stone.....MS
- Pillar, Pole or Post.....P
- Police Call Box.....PCB
- Police Telephone Pillar.....PTP
- Post Office.....PO
- Public Convenience.....PC
- Public House.....PH
- Pump.....P
- Revision Point.....rp
- Signal Box, or Post.....SB, SP
- Signal Bridge.....SBr
- Spring.....Spr
- Stone.....S
- Sundial.....SD
- Tank or Track.....TK
- Telephone Call Box.....TCB
- Traverse Station.....TS
- Water Point, or Tap.....Wt Pt, W T
- Weighbridge.....WB
- Well.....W
- Wind Pump.....Wd P
- Mean High or Low Water Springs.....MHS or MWS

PLAN SD 4929 NE

C16/A