

ORDNANCE SURVEY

Revised - November 1960
Levelled - 1930

Scale: 1:2500 or 25/344 inches to 1 Mile

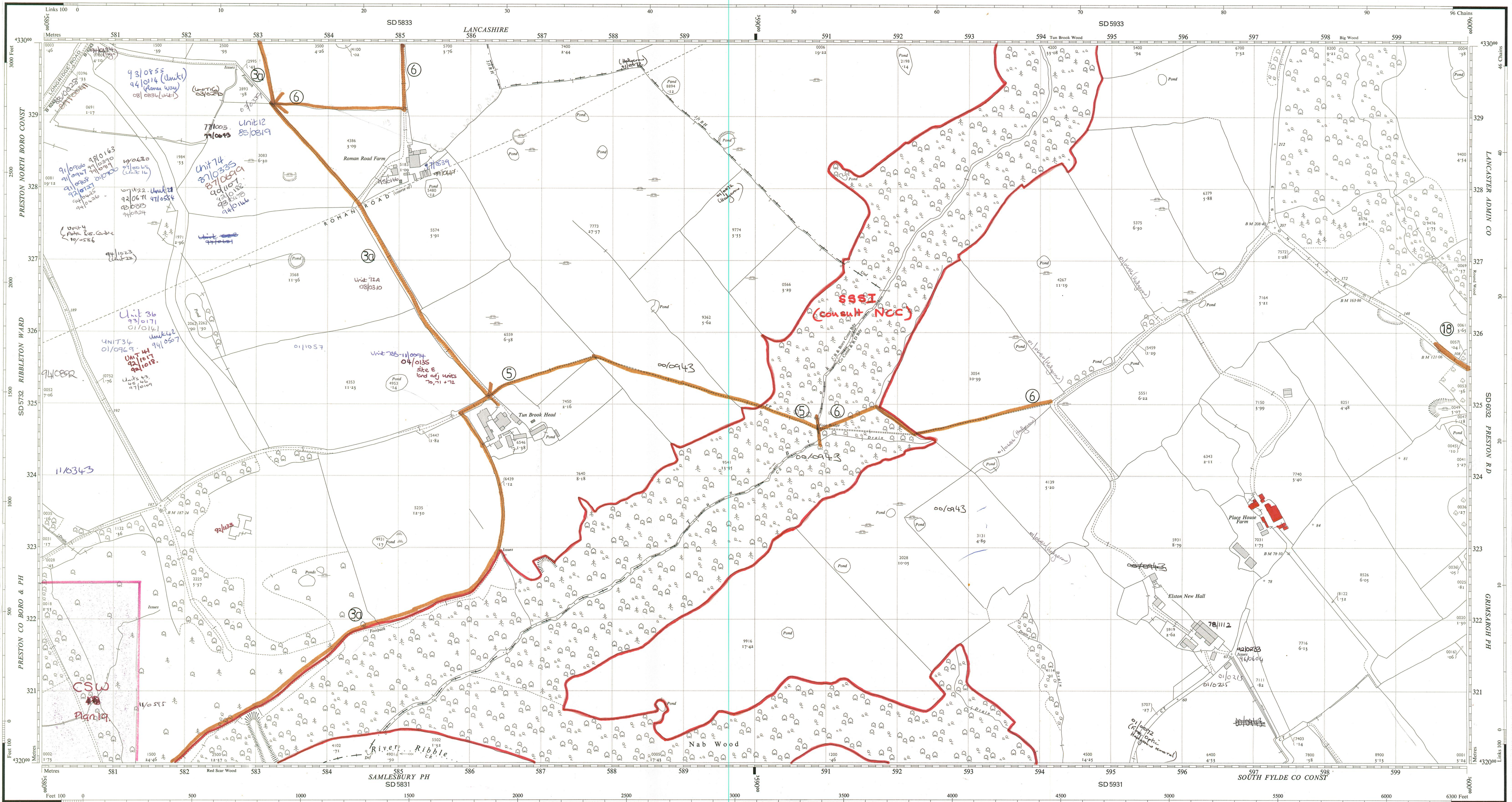
Revised - November 1960
Levelled - 1930

The West half of this sheet is Plan SD 5832
The East half of this sheet is Plan SD 5932

PLAN SD 5832 & PLAN SD 5932

CHECK H13/1
PLAN SD 5832 & PLAN SD 5932

PARCEL NUMBERS AND ACREAGES
The number and acreage of each parcel of land is shown within the parcel. It is important when identifying a parcel to specify the number(s) of the plan(s) on which it falls.
IN PARCELS DIVIDED BY THE SHEET EDGE, THE ACREAGES ARE SHOWN TO SHEET EDGE ONLY.



Made and published by the Director General of the Ordnance Survey, Chessington, Surrey, 1962.
Reconstituted from former County Series plans and revised 1960.

© Crown Copyright 1962. Price net.

The West half of this sheet is Plan SD 5832
The East half of this sheet is Plan SD 5932

H13

REFERENCE

For fuller information see Reference Card published separately.
NATIONAL GRID REFERENCE
The lines on the plan form part of the National Grid and are spaced at 100 metre intervals.
To give a large scale reference defining the position of a point to the nearest 10 metres proceed as follows:—
EXAMPLE: E in Elston New Hall

EASTING	NORTHING
Take west edge of square in which point lies and read the figures opposite this line on NORTH and SOUTH margins	Take south edge of square in which point lies and read the figures opposite this line on EAST and WEST margins
Estimate tens of metres from the grid line	Estimate tens of metres from the grid line
595	322
955	323

100 METRE REFERENCE: SD 595832323
For further information see "The Projection for Ordnance Survey Maps and Plans and the National Reference System".
The representation on this plan of a road, track or footpath is no evidence of the existence of a right of way.
1 square inch on this plan represents 196 ft on the ground.
The altitudes of points where shown is approximate.

- Antiquities (site of)
- Change of boundary meeting
- Limit of area within which the acreages of individual parcels are not shown
- Leveling Information
- Altitudes of Bench Marks and Surface Levels are given in feet above the Newlyn Datum.
- Bench Mark lists, containing fuller and possibly later levelling information, are obtainable from the Director General, Ordnance Survey.
- Boundary Mearing Abbreviations
- Base of Bank
- Centre of Bank
- Centre of Canal, etc.
- Centre of Drain, etc.
- Centre of Covered Stream
- Bench Mark
- Fundamental
- Parcels joined for acreages
- Levelling Information
- Revision Point or Traverse Station
- Triangulation Station
- Surface Level
- Revision Point or Traverse Station
- Triangulation Station
- Face of Wall
- Side of River, etc.
- Track of Hedge
- Track of Stream
- Delicod, Undefined

- Beer House
- Bench Mark
- Boundary Post
- Boundary Stone
- Capstan, Crane
- Cart Track
- Drinking Fountain
- Electricity Pylon, Post or Pylon
- Fire Alarm Pillar
- Flagstaff
- Foot Bridge
- Footpath
- Fundamental Bench Mark
- High or Low Water Mark of Medium Tides
- High or Low Water Mark of Ordinary Spring Tides
- Guide Post
- Letter Box
- Level Crossing
- Mile or Mooring Post
- Mile Stone
- Signal
- Pillar, Pole, Post or Pylon
- Police Call Box
- Police Telephone Pillar
- Post Office
- Public House
- Pump
- Revision Point
- Signal Box
- Signal Bridge
- Signal Post
- Spring
- Stone
- Summit
- Tank or Track
- Telephone Call Box
- Traverse Station
- Water Point
- Water Tap
- Weightbridge
- Well
- Wind Pump
- High or Low Water Mark of Ordinary Spring Tides
- High or Low Water Mark of Medium Tides

PARCEL NUMBERS AND ACREAGES
The number and acreage of each parcel of land is shown within the parcel. It is important when identifying a parcel to specify the number(s) of the plan(s) on which it falls.
IN PARCELS DIVIDED BY THE SHEET EDGE, THE ACREAGES ARE SHOWN TO SHEET EDGE ONLY.

PLAN SD 5832 & PLAN SD 5932