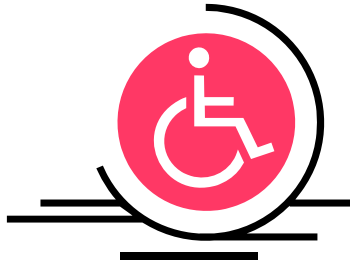


Changes to Disability Living Allowance – DLA.



On 8th April 2013 Disability Living Allowance will be replaced by PIP – Personal Independence Payment.



This affects you if you are between the ages of **16 to 64.**



Why is it changing?

To better reflect today's understanding of Disability.



There will still be an assessment of needs.



PIP aims to help those who struggle to live without the help and support of others.

There are 2 components for PIP.



Mobility needs.



Daily living needs.



There is a standard rate but also an enhanced rate for people with greater needs.

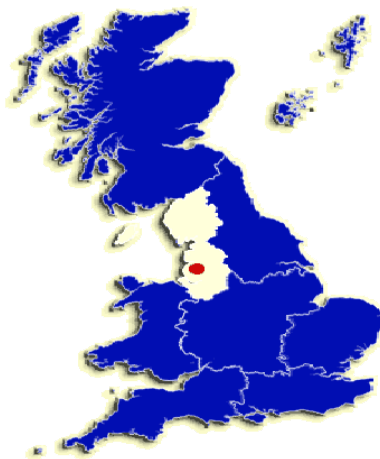


Most people will attend a meeting as part of their claim.



And also a medical assessment.

New Claims



PIP has already started for people living in the North West now. So any new claims for DLA will be treated as PIP.



You do not need to do anything yet.

However, if you have a change in your circumstances after 1st October 2013 or your award is due to expire; your claim will be reassessed as PIP.



If you already receive DLA

You will continue to receive DLA until a decision on PIP is made.

If PIP is not claimed or not awarded, then your DLA will stop.

More information is available at

www.direct.gov.uk/pip