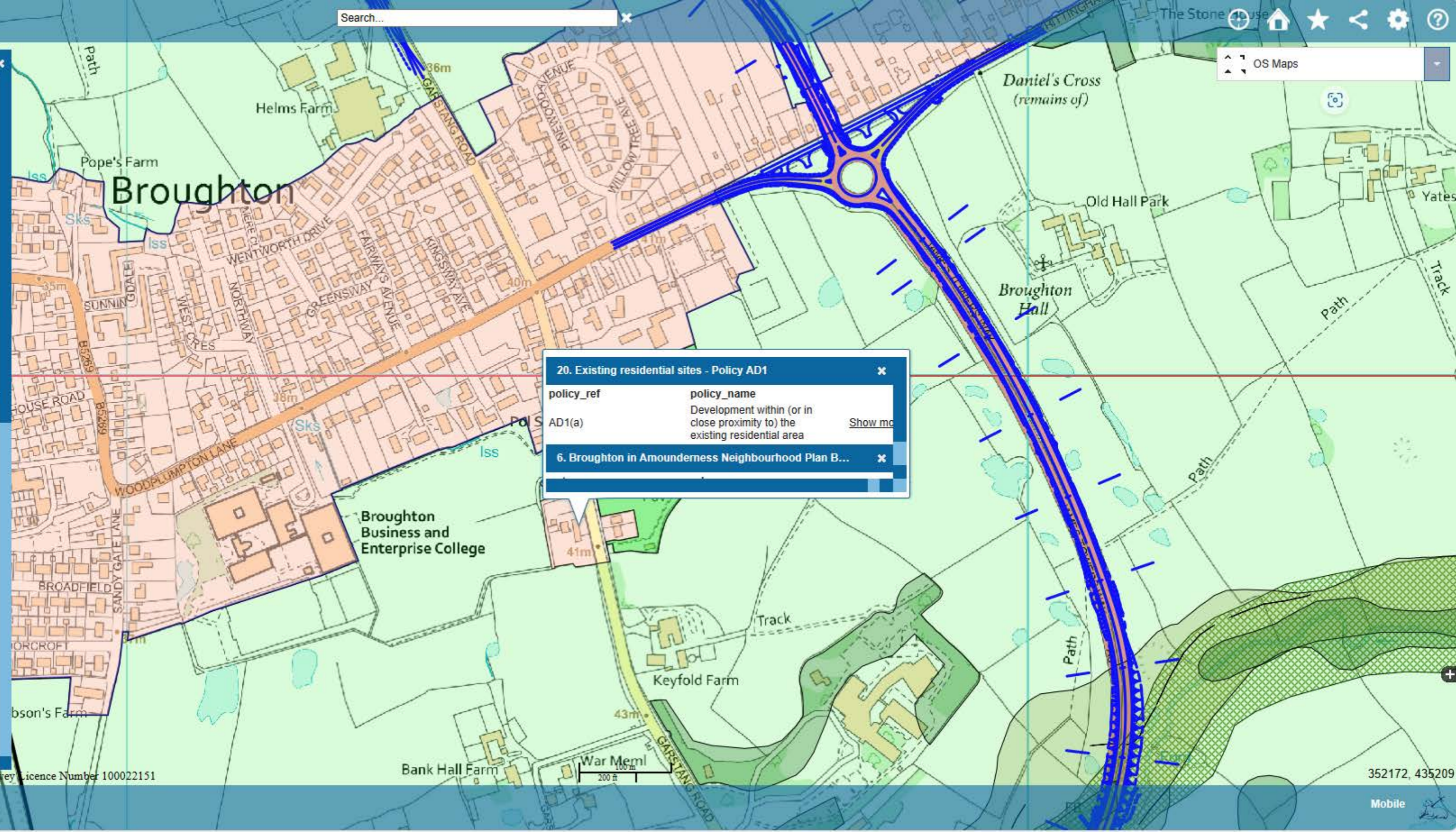


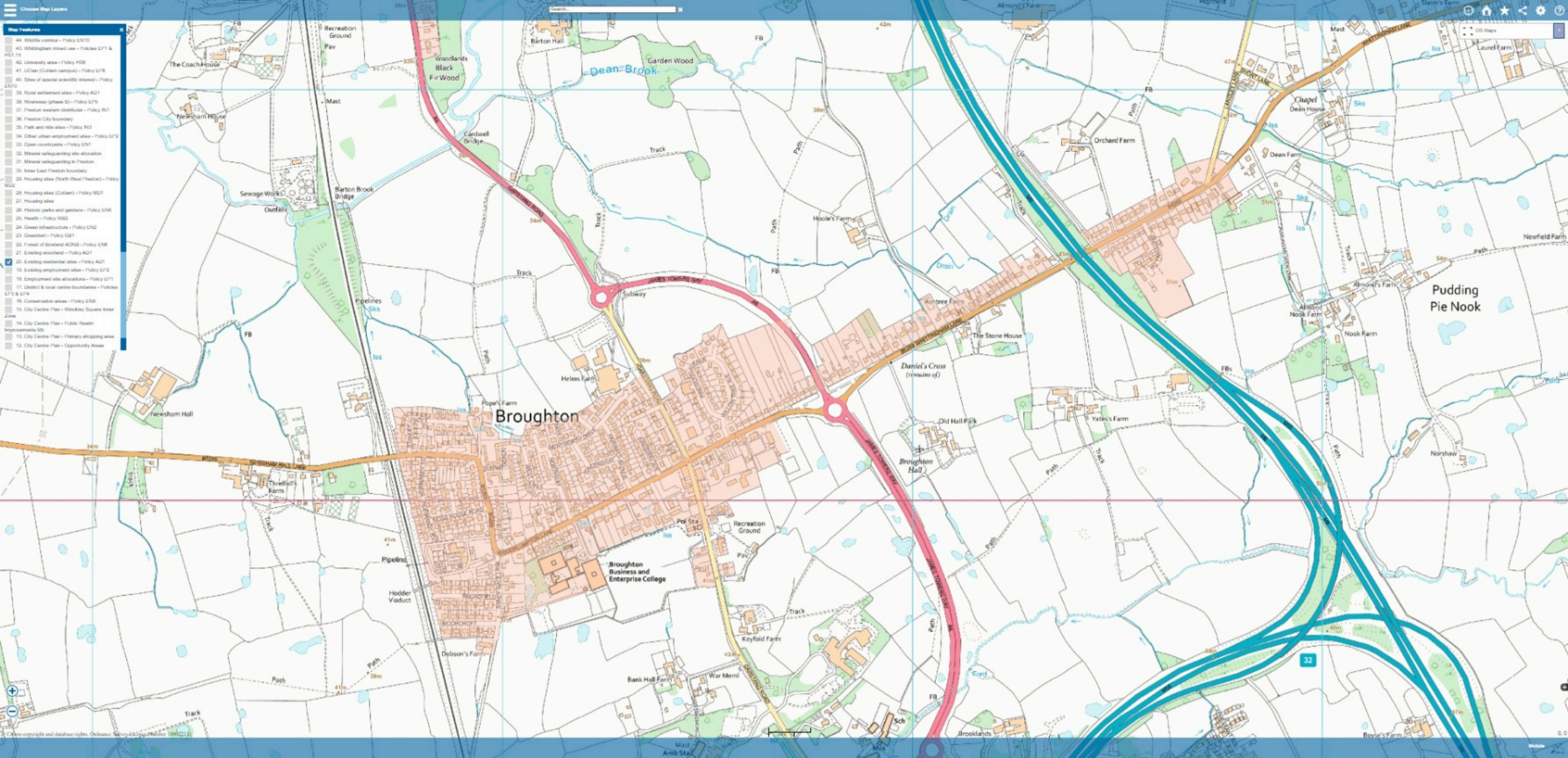
- Map Features**
- 44. Wildlife corridor - Policy EN10
  - 43. Whittingham mixed use - Policies EP1 & HS1.15
  - 42. University area - Policy HS6
  - 41. UClan (Cottam campus) - Policy EP6
  - 40. Sites of special scientific interest - Policy EN10
  - 39. Rural settlement sites - Policy AD1
  - 38. Riversway (phase B) - Policy EP5
  - 37. Preston western distributor - Policy IN1
  - 36. Preston City boundary
  - 35. Park and ride sites - Policy IN3
  - 34. Other urban employment sites - Policy EP2
  - 33. Open countryside - Policy EN1
  - 32. Mineral safeguarding site allocation
  - 31. Mineral safeguarding in Preston
  - 30. Inner East Preston boundary
  - 29. Housing sites (North West Preston) - Policy MD2
  - 28. Housing sites (Cottam) - Policy MD1
  - 27. Housing sites
  - 26. Historic parks and gardens - Policy EN8
  - 25. Health - Policy WB2
  - 24. Green infrastructure - Policy EN2
  - 23. Greenbelt - Policy GB1
  - 22. Forest of Bowland AONB - Policy EN6
  - 21. Existing woodland - Policy AD1
  - 20. Existing residential sites - Policy AD1
  - 19. Existing employment sites - Policy EP2
  - 18. Employment site allocations - Policy EP1
  - 17. District & local centre boundaries - Policies EP3 & EP4
  - 16. Conservation areas - Policy EN8
  - 15. City Centre Plan - Winckley Square Inner Zone
  - 14. City Centre Plan - Public Realm Improvements.fdb
  - 13. City Centre Plan - Primary shopping area
  - 12. City Centre Plan - Opportunity Areas



**20. Existing residential sites - Policy AD1**

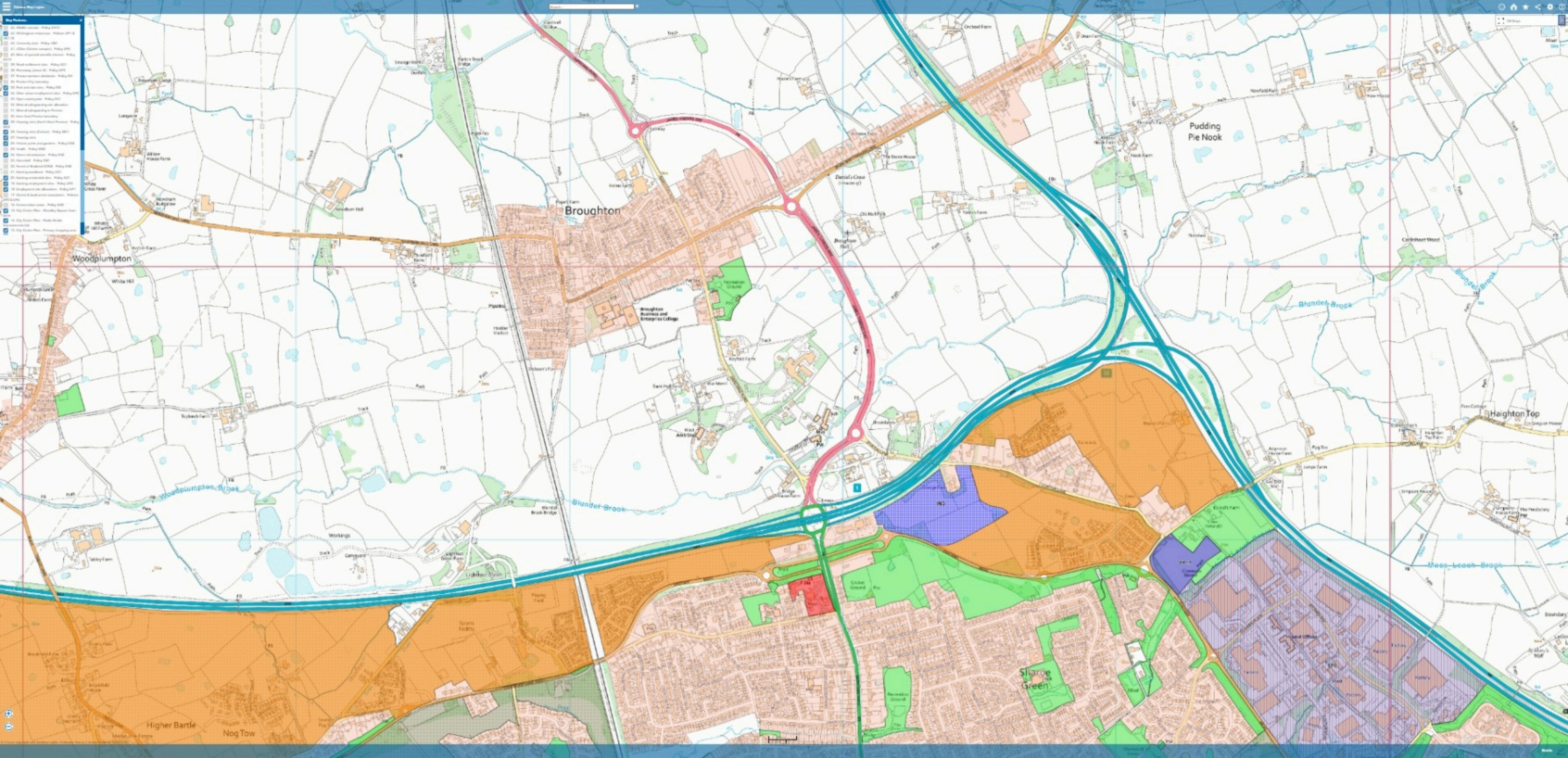
policy_ref	policy_name
AD1(a)	Development within (or in close proximity to) the existing residential area

**6. Broughton in Amounderness Neighbourhood Plan B...**



- Map Features
- 44. Wildlife corridor - Policy EN10
  - 43. Whittingham mixed use - Policies EPI & M1.15
  - 42. University area - Policy H3B
  - 41. UCan (Cotton campus) - Policy EPI
  - 40. Sites of special scientific interest - Policy EN10
  - 39. Rural settlement area - Policy AG1
  - 38. Highway (phase 2) - Policy EPI
  - 37. Preston western distributor - Policy EN1
  - 36. Preston City boundary
  - 35. Park and ride area - Policy EN3
  - 34. Other urban employment area - Policy EPI2
  - 33. Open countryside - Policy EN1
  - 32. Mineral safeguarding site allocation
  - 31. Mineral safeguarding in Preston
  - 30. Inner East Preston boundary
  - 29. Housing area (North West Preston) - Policy M2
  - 28. Housing area (Cotton) - Policy M2
  - 27. Housing area
  - 26. Historic parks and gardens - Policy EN8
  - 25. Health - Policy W32
  - 24. Green infrastructure - Policy EN2
  - 23. Greenbelt - Policy G3
  - 22. Forest of Bowland AONB - Policy EN6
  - 21. Existing woodland - Policy AD1
  - 20. Existing residential area - Policy AD1
  - 19. Existing employment area - Policy EPI2
  - 18. Employment site allocations - Policy EPI1
  - 17. District & local centre boundaries - Policies EPI3 & EPI4
  - 16. Conservation areas - Policy EN8
  - 15. City Centre Plan - Wickley Square Area
  - 14. City Centre Plan - Public Realm Improvements Site
  - 13. City Centre Plan - Primary shopping area
  - 12. City Centre Plan - Opportunity Areas

Woodlands Black Fir Wood  
Dean Brook  
Garden Wood  
Barton Brook Bridge  
Cardwell Bridge  
Orchard Farm  
Dean Farm  
Almond's Farm  
Nook Farm  
Pudding Pie Nook  
Daniel's Cross (remains of)  
Broughton Hall  
Broughton Business and Enterprise College  
Keyfold Farm  
War Meml  
Brooklands



- 10. Green Belt
- 11. Conservation Areas
- 12. Local Green Spaces
- 13. Open Space
- 14. Recreation
- 15. Flood Risk
- 16. Air Quality
- 17. Noise
- 18. Transport
- 19. Planning
- 20. Housing
- 21. Employment
- 22. Retail
- 23. Community
- 24. Environmental
- 25. Other

Woodplumpton

Broughton

Pudding Pie Nook

Haighton Top

Share Green

Higher Bartle

Nog Tow