

# Recycling Sorting Game

Do you know which bin you should use when you throw something away? Play this recycling sorting game to find out!

## How to play

1. Make your bins with the templates provided. You should have a general waste bin, paper and card bin, plastic, cans and glass bin, garden waste bin and a Recycling Centre skip.
2. Cut out all of your objects.
3. Now see if you can put each item in the correct bin. Be careful though, some of them will need to go to the Recycling Centre to be recycled.
4. When you are finished, check the answers on the bottom of the last page and see how many are correct.

*A Recycling Centre is a drop off point where you can sort out even more of your rubbish to be recycled.*

## Bin template instructions

1. Carefully **cut** around the **solid lines**.
2. **Fold** the paper along the **dotted lines**.
3. Glue or tape the side and bottom tabs and fold into shape.

**Top tip for parents!**

If the templates are too difficult to cut out, you can cut out the bin and recycling centre images below and stick them to yoghurt pots instead.

## What you will need



Scissors



Glue

or



Sticky Tape

Can you think about what items could be reused instead of just recycled?

Recycling is much better for the environment and we should try and recycle as much as we can!



[www.preston.gov.uk/recycleitems](http://www.preston.gov.uk/recycleitems)

# Objects to cut out...

 <b>Cards</b>	 <b>Leftover Food</b>	 <b>Plastic Tubs, Pots &amp; Trays</b>	 <b>Tissues /Wipes</b>	 <b>Meat Tray</b>	 <b>Crisp/Sweet Packets</b>	 <b>Cardboard Boxes</b>
 <b>Plastic Bags</b>	 <b>Biscuit/Sweet Tins</b>	 <b>Plastic Film</b>	 <b>Cereal Boxes</b>	 <b>Wallpaper</b>	 <b>Plant Pots</b>	 <b>Clothing &amp; Shoes</b>
 <b>Nappies</b>	 <b>Yoghurt Tubs</b>	 <b>Polystyrene</b>	 <b>Pots &amp; Pans</b>	 <b>Clean Foil</b>	 <b>Masks</b>	 <b>Toilet/Kitchen Roll Tubes</b>
 <b>Hard Plastic</b>	 <b>Envelopes</b>	 <b>Scrap Metal</b>	 <b>Plastic Bottles</b>	 <b>Newspapers</b>	 <b>Glass &amp; Crockery</b>	 <b>Glass Bottles &amp; Jars</b>
 <b>Food &amp; Drink Cans</b>	 <b>Bubble Wrap</b>	 <b>Paper</b>	 <b>Cartons</b>	 <b>Batteries</b>	 <b>Empty Aerosols</b>	 <b>Takeaway Cups</b>
 <b>Empty Pizza Boxes</b>	 <b>Electricals</b>	 <b>Books</b>	 <b>Tinsel</b>	 <b>Roasting Tray</b>	 <b>Tape</b>	 <b>Broken Bauble</b>
 <b>Crackers (no glitter)</b>	 <b>Ribbon</b>	 <b>Broken Xmas Lights</b>	 <b>Shiny or Glitter Wrapping Paper</b>	 <b>Wrapping Paper (no glitter)</b>	 <b>Fake Tree</b>	 <b>Real Tree</b>
 <b>Wood</b>	 <b>Grass Cuttings</b>	 <b>Brick</b>	 <b>Soil</b>	 <b>Flowers</b>	 <b>Twigs</b>	 <b>Leaves</b>
 <b>Weeds</b>	 <b>Hedge Trimmings</b>					



# General Waste Bin Template

— **Cut** the solid lines

- - - - **Fold** the dotted lines

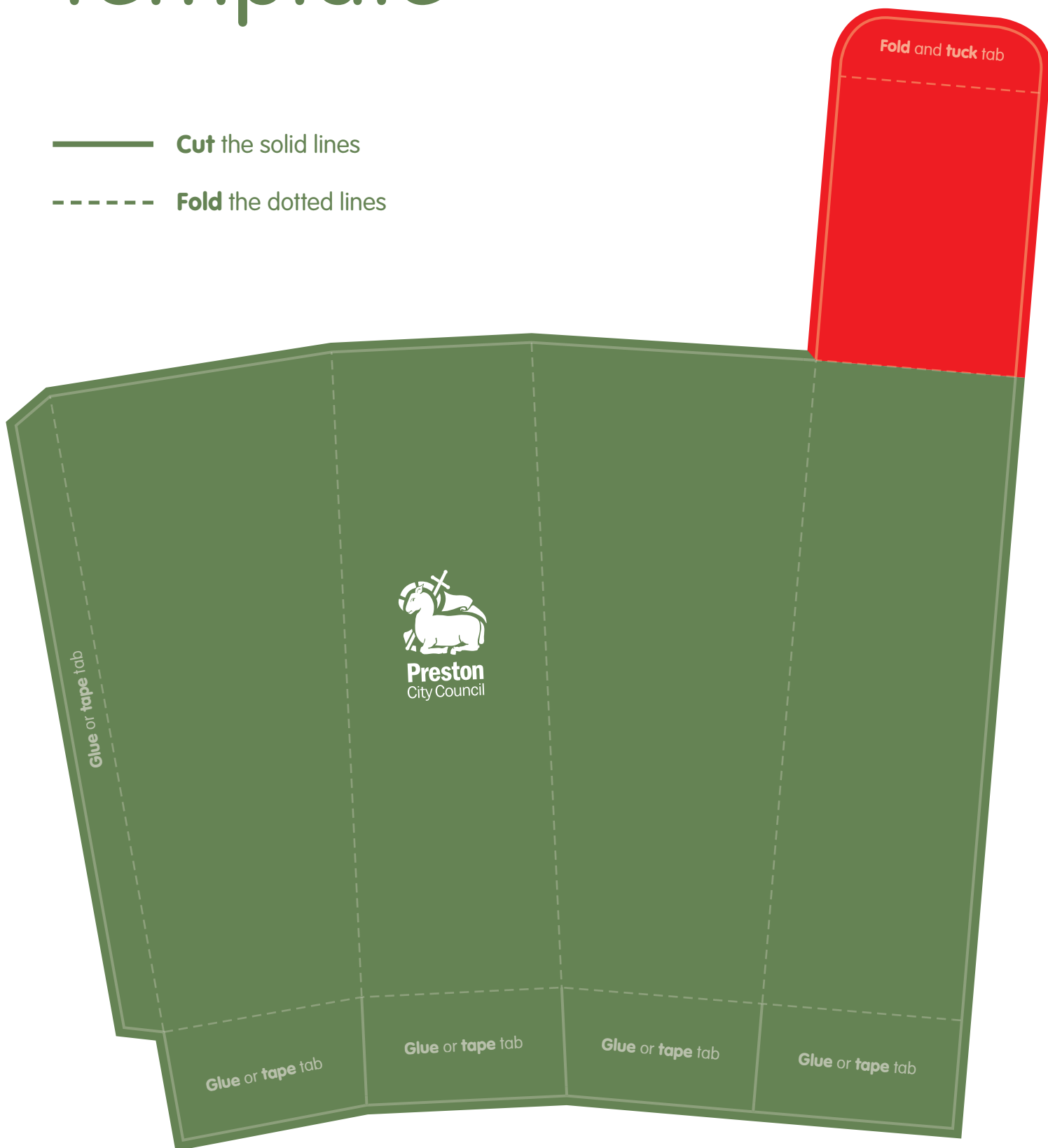


# Paper & Card Bin

## Template

— **Cut** the solid lines

- - - - **Fold** the dotted lines

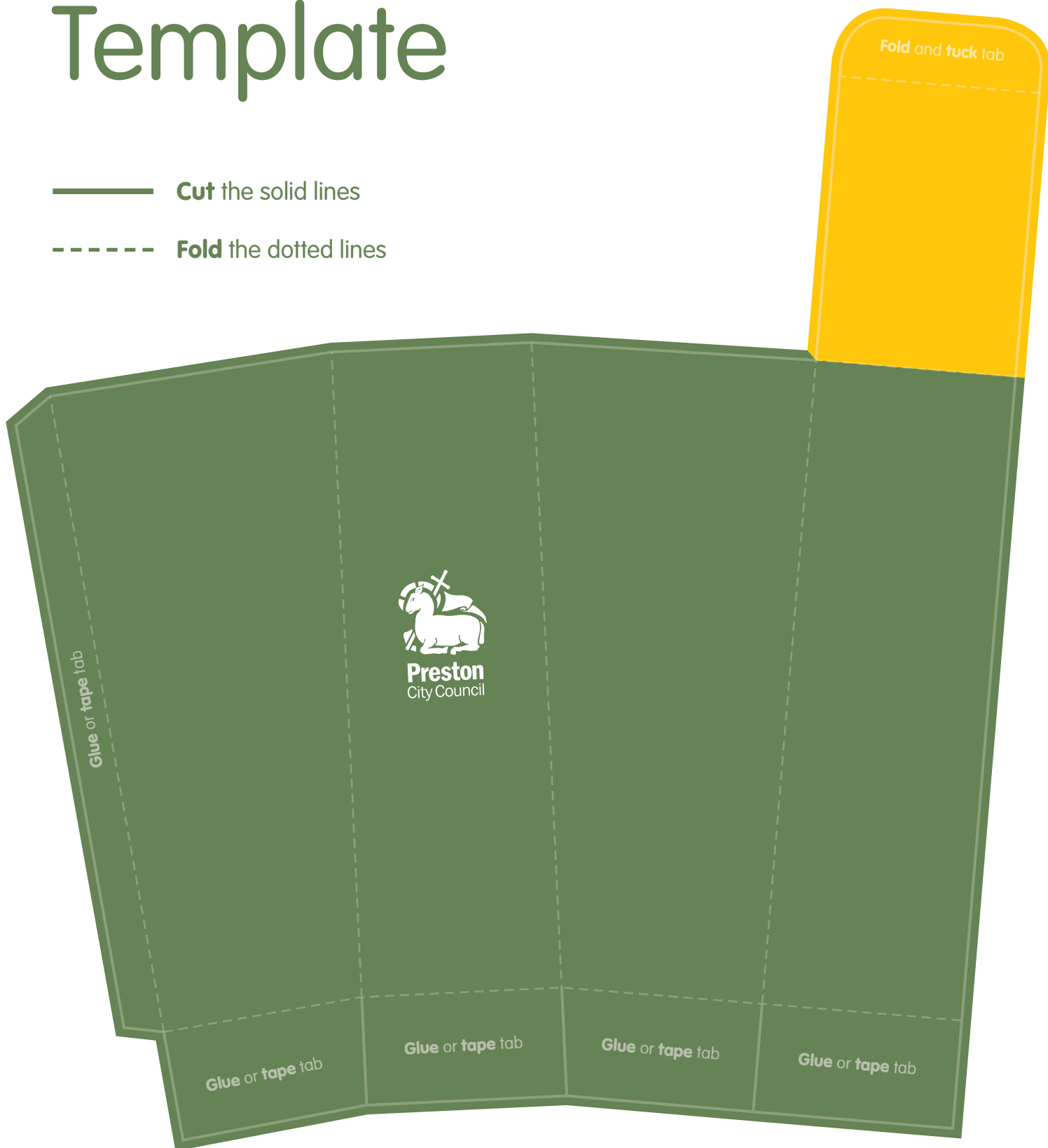


# Plastic, Cans & Glass Bin

## Template

— **Cut** the solid lines

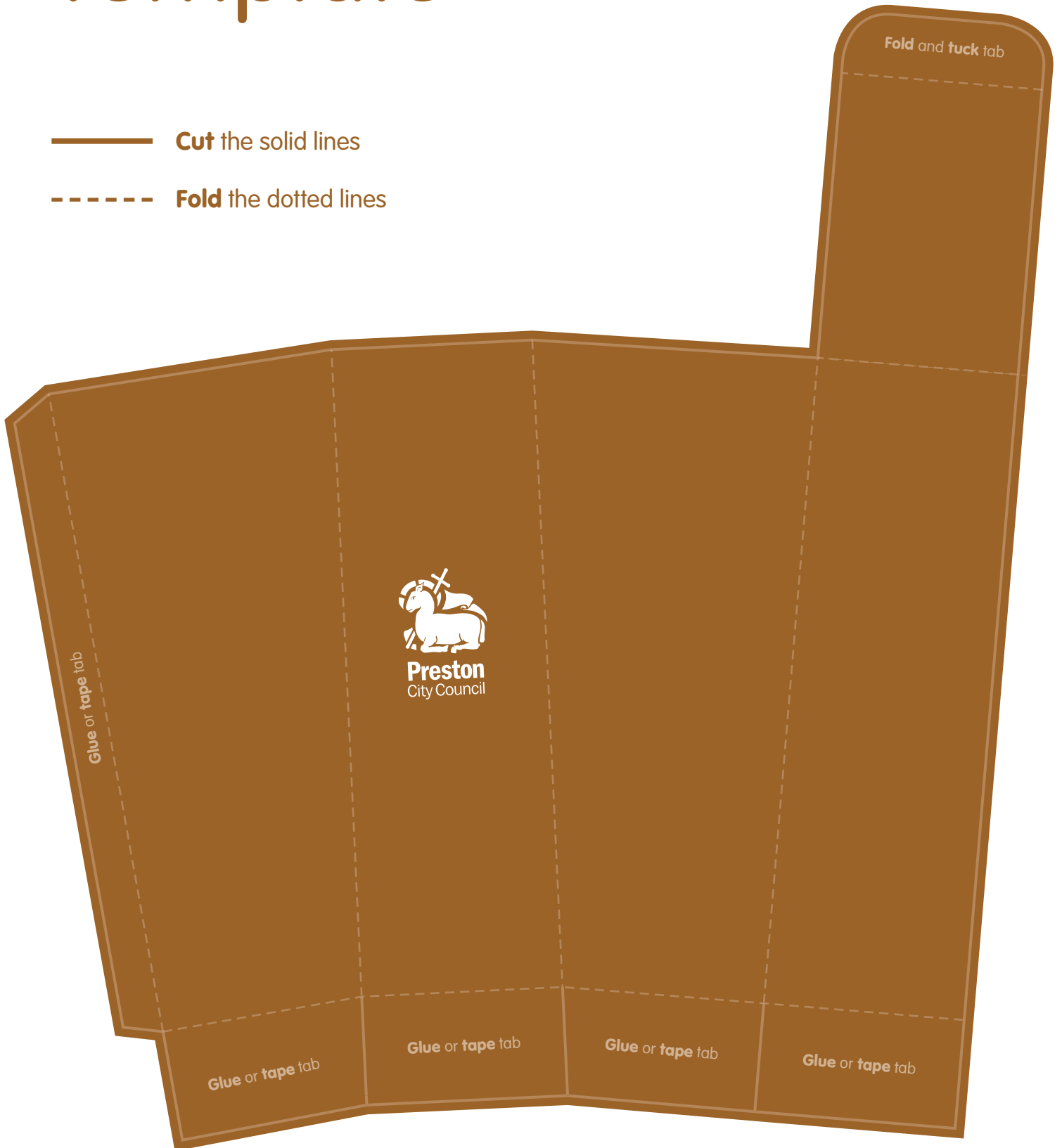
- - - - **Fold** the dotted lines



# Garden Waste Bin Template

——— **Cut** the solid lines

- - - - - **Fold** the dotted lines

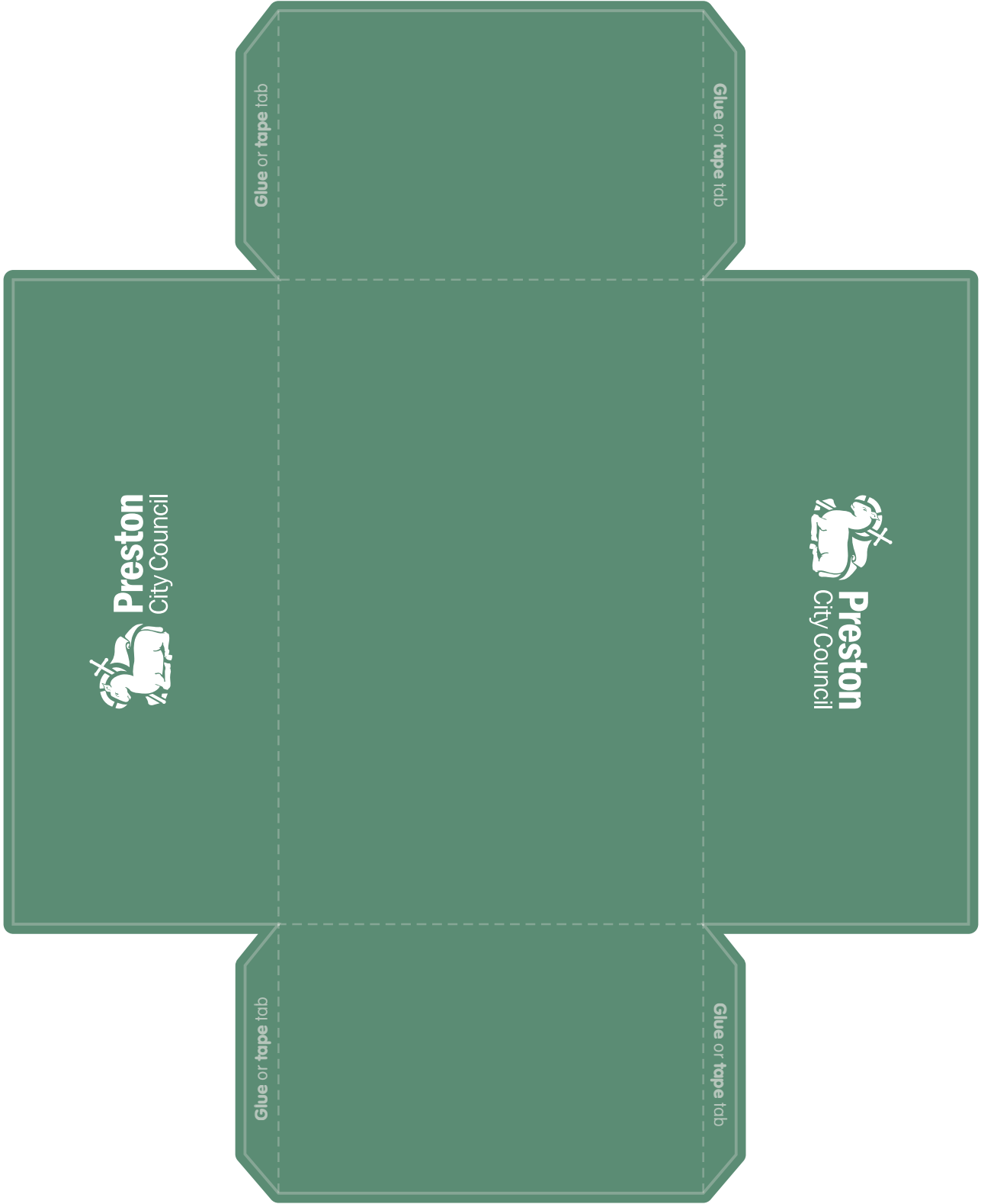


# Recycling Centre Bin

## Template

— Cut the solid lines

- - - - - Fold the dotted lines



**ANSWERS:**

- General waste bin** - glass and crockery, plastic film, nappies, pots and pans, tissues/wipes, takeaway food, masks, crisp/sweet packets, polystyrene, plastic bags, bubble wrap, wallpaper, tinsel, tape, broken bauble, ribbon, shiny or glitter wrapping paper.
- Paper & card bin** - cards, newspapers, envelopes, cardboard boxes, cereal boxes, empty pizza boxes, paper, toilet/kitchen roll tubes, crackers (no glitter), wrapping paper (no glitter), glass bottles & jars, roasting tray.
- Plastic, cans & glass bin** - yoghurt tubs, meat tray, food & drink cans, plastic tubs, pots & trays, clean foil, empty aerosols, plant pots, biscuit/sweet tins, plastic bottles.
- Garden waste bin** - real tree, flowers, twigs, weeds, hedge trimmings, leaves, grass cuttings.
- Recycling centre bin** - hard plastic, scrap metal, cartons, batteries, electricals, clothing & shoes, books, broken Xmas lights, fake tree, brick, wood, soil.