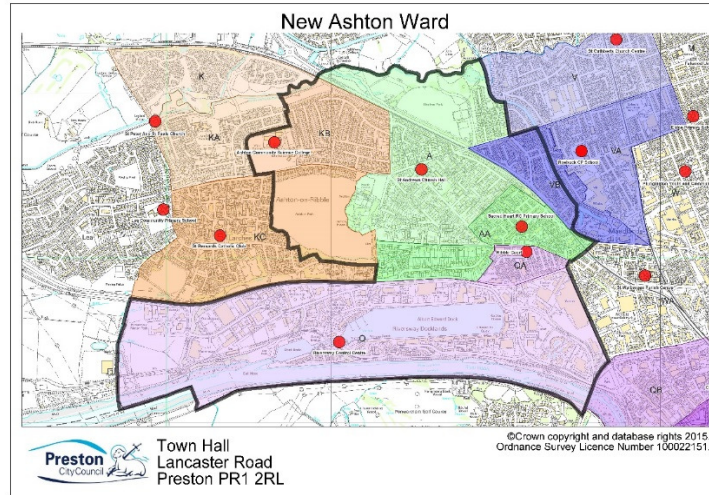


Ashton Ward



A larger version of this map is available in the appendix

The new Ashton Ward comprises of the current polling districts:

A, AA, KB, KC (part), Q, QA, VB (part)

Information relating to current polling districts and polling places:

Polling District	No. of Electors	No. of Postal Voters	Polling Station Address	Disabled Access
A	1795	361	St Andrew's Church Hall, Tulketh Road, Ashton, Preston PR2 1ER	Yes
AA	1261	185	Sacred Heart RC Primary School, Poulton Street, Ashton, Preston PR2 2SA	No
KB	1187	233	Ashton Community Science College, Aldwych Drive, Ashton, Preston PR2 1SL	Yes - Partial
<i>Part of:</i> KC	94	31	St Bernards Catholic Club, Elswick Road, Ashton, Preston PR2 1NT	Yes
Q	654	123	Riversway Control Centre, adj. to The Swing Bridge, Navigation Way, Ashton, Preston PR2 2YP	Yes
QA	410	44	Ribble Court, Douglas Street, Preston, PR2 1BN	Yes
<i>Part of:</i> VB	810	111	Sports Hall – Parker Street, Roebuck CP School, Preston PR2 2AH	Yes

Polling District - A

Area:

No change

Polling Station:

No change. St Andrews Church Hall is situated centrally within the polling district. It has disabled access and is well known to electors.

Polling District - AA

Area:

No change

Polling Station:

We currently use Sacred Heart Primary School which does not have full disabled access due to a step at the walled boundary of the school. There is insufficient space for a ramp due to kerbside railings.

Officers have visited the area and found an alternative and very suitable premise - Ashton Methodist Church, which is fully disability compliant, easily accessible and has parking at either side of the building. The premises are available on election days.

Polling District - KB

Area:

No change

Polling Station:

No change. Ashton Community Science College is well known and easily accessible for electors, however there have been some issues with this venue. At the last election it was discovered that electronic security gates had been installed at the main entrance and during school hours electors had to use an intercom to be allowed access to the polling station.

The room used for polling is accessed by steps, however, there is an alternative door available for disabled access and signed access instructions for electors with accessibility issues is provided.

It is proposed to continue to use Ashton Community Science College as the polling station. We are working with the Head Teacher to find a solution and propose to erect fencing leading from the left gate to the polling station, thereby allowing unhindered access to the polling station for electors, whilst retaining a safe environment for pupils.

Part of Polling District - KC

Area:

This part of the current polling district KC now included within the new Ashton Ward boundary is mainly covered by Ashton Park but includes a row of 55 houses running between the park to the rear and Blackpool Road to the front with 94 electors resident.

Given the small number of electors in this area, it is proposed that this part of KC merges with polling district KB to form one area.

Polling Station:

Electors to use the polling station for KB, Ashton Community Science College, which is easily accessible in the adjoining area.

Polling District - Q

Area:

No change

Polling Station:

No change. Riversway Control Centre is located centrally within the polling district. Although only small, it is a suitable location with disabled access, within the polling district.

Polling District - QA

Area:

No change

Polling Station:

QA is a very small polling district with 410 electors. We currently use Ribble Court as a polling station for this area. There are issues with this venue, as the poll is held in the residents lounge, which is a thoroughfare and cannot be cordoned off to ensure the secrecy of the ballot, as is required under election law.

It is proposed to share polling stations with polling district AA using Ashton Methodist Church, which is situated close by for electors.

Part of Polling District - VB

Area:

The new ward boundary splits polling district VB. This part includes the area to the west side of the canal.

The boundaries of this polling district will be aligned with the new ward boundaries.

Polling Station:

No change. Polling District VB currently shares its polling station with VA - The Sports Hall at Parker Street (part of Roebuck CP School) which has disabled access, and is well known to electors. It is proposed this arrangement continues.

Limiting Factors:

Polling districts A, AA, KB, KC are in Preston South West Division

Polling districts Q, QA are in Preston City Division

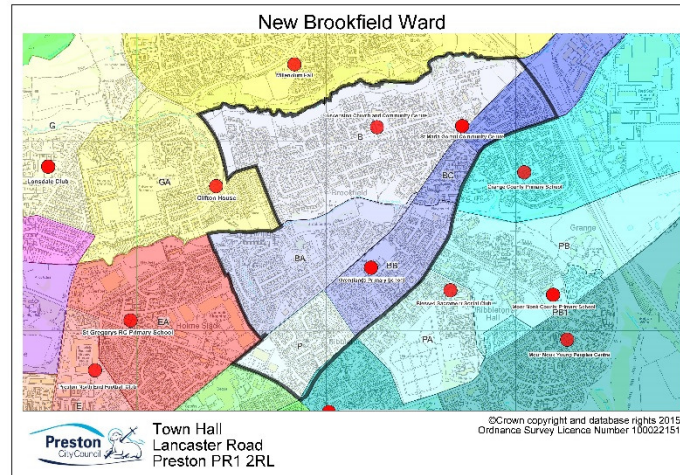
Polling district VB is in Preston Central West Division

Proposals:

Polling District	Proposals
A	No change to area or polling station
AA	No change to area. Polling Station – Ashton Methodist Church
KB	No change to area or polling station.

<i>Part of:</i> KC	To merge with KB. Polling Station – Ashton Community Science College.
QA	No change to area. Polling Station – Ashton Methodist Church
<i>Part of:</i> VB	This reduced area to be a separate polling district. Polling Station - The Sports Hall, Roebuck School.

Brookfield Ward



A larger version of this map is available in the appendix

The new Brookfield Ward comprises of the current polling districts:

B, BA, BB, BC, BD (part), P

Information relating to current polling districts and polling places:

Polling District	No. of Electors	No. of Postal Voters	Polling Station Address	Disabled Access
B	2420	374	Ascension Church & Community Centre, 454 Watling Street Road, Ribbleton, Preston PR2 6UA	Yes
BA	1147	308	Greenlands CP School, Dawnay Road, Ribbleton, Preston PR2 6BB	Yes
BB	786	104	Greenlands CP School, Dawnay Road, Ribbleton, Preston PR2 6BB	Yes
BC	325	69	St. Maria Goretti Community Centre, Gamull Lane, Ribbleton, Preston PR2 6SJ	Yes via a temporary ramp
<i>Part of:</i> BD	402	60	St. Maria Goretti Community Centre, Gamull Lane, Ribbleton, Preston PR2 6SJ	Yes via a temporary ramp
P	649	154	Willow Crescent Community House, 28/30 Willow Crescent, Ribbleton, Preston PR2 6PB	Yes

Part of Polling District - B

Area:

No change

Polling Station:

No change. The newly re-built Ascension Church & Community Centre has excellent facilities, disabled access, parking and is conveniently situated centrally within the polling district.

Polling District - BA

Area:

No change

Polling Station:

No change. This polling district currently shares a polling place with polling district BB at Greenlands School which is accessible to electors in the area.

Polling District - BB

Area:

No change

Polling Station:

No change. The polling place, Greenlands School, is situated centrally within the polling district. It has disabled access and is well known to electors.

Polling District - BC

Area:

No change

Polling Station:

No change. St Maria Goretti is shared with polling district BD. It is centrally located and is conveniently placed for electors to reach. A temporary ramp is provided at each election to aid accessibility.

Part of Polling District - BD

Area:

The area now contained within Brookfield Ward is the residential side of polling district BD, south west of the motorway.

It is proposed to merge this part of BD with polling district BC. The combined electorate for these areas would still be relatively low at 727.

Polling Station:

No change. Continue to vote at St Maria Goretti which is central to the combined area.

Polling District - P

Area:

It is proposed this polling district is merged with polling district BB. This would create an electorate of 1435.

Polling Station:

This polling district previously shared a polling station with polling district PD, Willow Crescent. As polling district PD is no longer within the ward boundaries, it is proposed the electorate vote at Greenlands School, located in polling district BB. The station is accessible for the electorate and within the new ward boundaries.

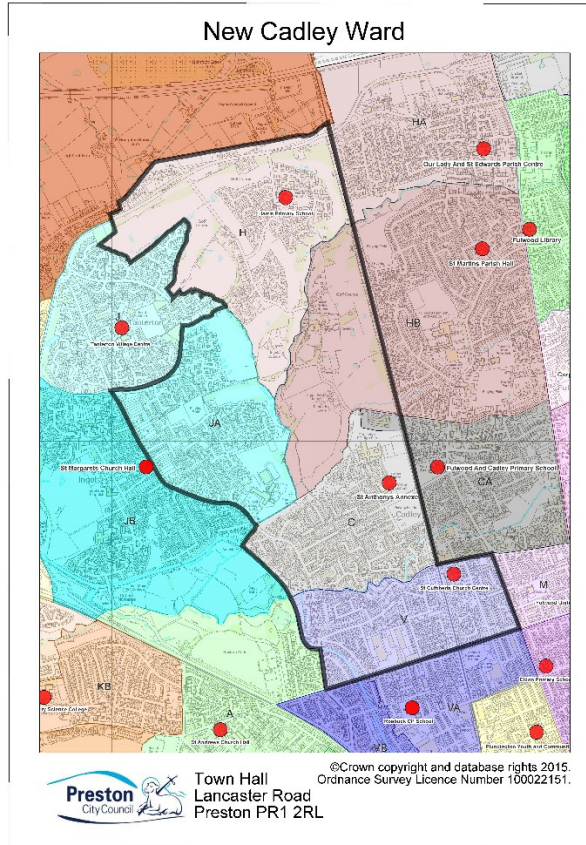
Limiting Factors:

None – all polling districts are in Preston East Division

Proposals:

Polling District	Proposals
B	No change to area or polling station
BA	No change to area or polling station
BB	No change to area or polling station
BC	No change to area or polling station
<i>Part of:</i> BD	Merge this area with polling district BC. No change to polling station
P	Merge this area with polling district BB. Polling station – Greenlands CP School.

Cadley Ward



A larger version of this map is available in the appendix

The new Cadley Ward comprises of the current polling districts:

C, CA (part), H, HB (part), JA, V

Information relating to current polling districts and polling places:

Polling District	No. of Electors	No. of Postal Voters	Polling Station Address	Disabled Access
C	1785	426	St. Anthony's Annexe, St. Anthony's Drive, Fulwood, Preston PR2 3SQ	Yes
<i>Part of:</i> CA	63	30	Fulwood & Cadley Primary School, Cadley Causeway, Fulwood, Preston PR2 3QT	Yes
H	834	183	Harris Primary School, Wychnor, Fulwood, Preston PR2 7EE	Yes
<i>Part of:</i> HB	30	4	St Martin's Parish Hall, Broadway, Fulwood, Preston PR2 9TH	Yes

JA	1373	299	St. Margaret's Church Hall, Tag Lane, Ingol, Preston PR2 3ZU	Yes
V	1969	411	St. Cuthbert's Church Centre, Lytham Road, Fulwood, Preston PR2 3AR	Yes

Polling District - C

Area:

No change

Polling Station:

No change. St Anthony's Annexe has disabled access and is the most suitable premise within the polling district. It has ample parking and is well known to electors.

Part of Polling District - CA

Area:

This very small part of polling district CA is Hollybank - an over 55's/retirement complex.

The new boundary runs along the railway and has cut off this small area which had previously been included within CA's polling district boundary for ease of voting for residents.

This part of CA is in different divisions to surrounding polling districts C and HB and cannot be merged. It will therefore have to be made into a separate polling district.

Polling Station:

Unfortunately there is no easy solution for this small area and it is proposed, to keep within the ward boundaries, electors vote at St Anthony's Annexe.

Polling District - H

Area:

No change

Polling Station:

No change. Harris Primary School is situated centrally within the polling district. It has disabled access and is well known to electors.

Part of Polling District - HB

Area:

This part of polling district HB, which comprises solely of properties on Walker Lane, west of the railway line, is in a different division to polling districts H and C.

It is proposed to make this area a new polling district.

Polling Station:

The Polling Station used for polling district H, Harris Primary School is more convenient for electors to access and is within the ward boundaries. It is proposed to use this as the polling station for this area.

Polling District - JA

Area:

No change

Polling Station:

There are no suitable premises within this polling district. Gateway’s new independent living development off Dovedale Avenue may have a suitable communal area for polling when it is built. This will be kept under review. In the interim, it is proposed to continue to use the current polling station, St Margaret’s Church Hall. It is easily accessible for electors, has disabled access, a large car park and is well known to electors. It is also large enough to have separate polling stations within the building.

Polling District - V

Area:

No change

Polling Station:

No change. St Cuthbert’s Church Centre is situated within the polling district. It is an excellent venue, has disabled access, good car parking and is well known to electors.

Limiting Factors:

Polling districts C, H & JA are in Preston West Division
Polling district HB is in Preston North Division
Polling districts CA & V are in Preston Central West Division

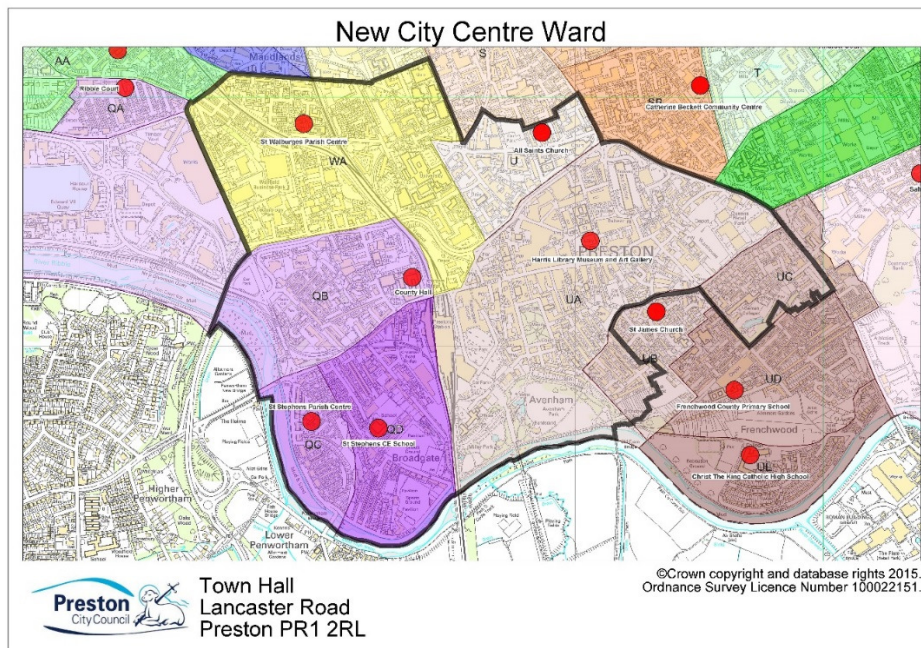
Current parliamentary boundaries C, CA, H & HB are in Wyre & Preston North Constituency, with the remainder in Preston Constituency

Parish Boundaries – Polling district JA now forms the Ingol North East Ward of Ingol & Tanterton Neighbourhood Council

Proposals:

Polling District	Proposals
C	No change to area or polling station
<i>Part of:</i> CA	Create a separate polling district for this area. Polling station – St Anthony’s Annexe
H	No change to area or polling station
<i>Part of:</i> HB	Create a separate polling district for this area. Polling station - Harris Primary School
JA	No change to area or polling station
V	No change to area or polling station

City Centre Ward



A larger version of this map is available in the appendix

The new City Centre Ward comprises of the current polling districts:

QB, QC, QD, U, UA (part), UB (part), UC (part), WA

Information relating to current polling districts and polling places:

Polling District	No. of Electors	No. of Postal Voters	Polling Station Address	Disabled Access
QB	947	172	County Hall - (Fishergate Hill Entrance), Fishergate, Preston PR1 8XB	Yes
QC	705	103	St. Stephen's Parish Centre, Bird Street, Preston PR1 8DY	Yes
QD	1312	233	The Community Room, St. Stephen's CE Primary School, South Meadow Lane, Preston PR1 8JN	Yes
U	267	17	All Saints Church, Melbourne Street Entrance, Preston PR1 2RX	Yes
<i>Part of:</i> UA	965	117	Harris Museum & Art Gallery, Education Room, Market Square, Preston, PR1 2PP	Yes

<i>Part of:</i> UB	407	72	St. James Church, Knowsley Street, off Avenham Lane, Preston PR1 3SA	Yes
<i>Part of:</i> UC	389	56	St. James Church, Knowsley Street, off Avenham Lane, Preston PR1 3SA	Yes
WA	1131	151	St. Walburge's Parish Centre, Weston Street, Preston PR2 2QE	Yes

Polling District - QB

Area:

No change

Polling Station:

No change. County Hall is the most suitable building within the polling district. It is accessible to all electors, a well known building and has disabled access.

Polling District – QC

Area:

No change

Polling Station:

No change. St Stephen's Parish Centre is situated centrally within the polling district. It has disabled access and is well known to electors.

Polling District - QD

Area:

No change

Polling Station:

No change. St Stephen's School is situated centrally within the polling district. The Community Room is a small self sufficient complex attached to the school with a separate entrance which allows the school to remain open. It has disabled access and extra signage is provided to direct electors.

Polling District - U

Area:

Polling district U is a small area with an electorate of just 267 electors. At the last election there was only an 11% turnout, resulting in just 28 electors visiting the station. The running of a separate polling station is not sustainable and it is proposed that this polling district is merged with Polling District UA.

Polling Station:

When merged with UA, electors will use the Harris Museum, which is easily accessible for electors. It has disabled access and is well known.

Part of Polling District - UA

Area:

This area contains the majority of polling district UA with just the south easterly tip (with no housing) moving into Fishwick & Frenchwood Ward.

Polling Station:

No change. The Harris Museum & Art Gallery is located centrally within the polling district, it is easily accessible for electors, has disabled access and is well known.

Part of Polling District – UB

Area:

This polling district has been split by the new ward boundary, which runs down Berwick Road. The area contained within City Centre Ward has only 407 electors and it is proposed to merge this area with polling district UA.

Polling Station:

Following the boundary change, this area now identifies with the City Centre Ward, and it is proposed that once merged with polling district UA, the electors vote at the Harris Musuem.

Part of Polling District –UC

Area:

There are two changes to the boundary of this polling district and ward boundary.

The southern most boundary line has been amended. It previously ran along Selborne Street, Mellor Place and part of James Street. It has now been amended to run behind these houses, thereby moving them into Fishwick & Frenchwood ward.

The second change to the boundary occurs on the easterly border which now ends at London Road, moving properties to the east into Fishwick & Frenchwood ward.

The remaining part of UC is now contained within the boundaries of the City Centre Ward, contains 389 electors, and it is proposed that this part of the polling district is also merged with polling district UA.

Polling Station:

Once merged with Polling District UA, the electors will vote at Harris Museum polling station which is accessible for the electors.

Polling District - WA

Area:

No change

Polling Station:

No change. St Walburses is situated centrally within the polling district. It has disabled access and is well known to electors.

Limiting Factors:

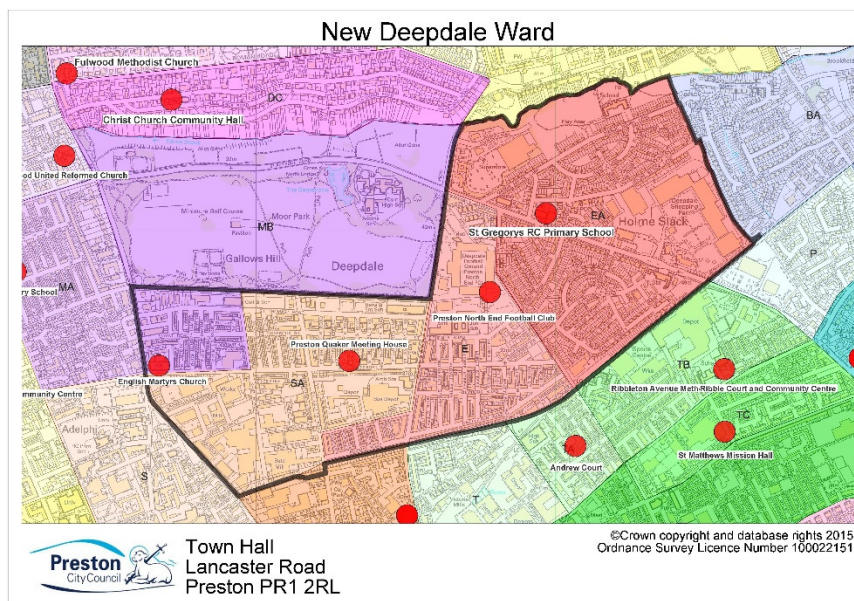
Polling districts QB, QC, QD, U, UA, UB and UC are in Preston City Division
Polling district WA is in Preston Central West Division

Proposals:

Polling District	Proposals
QB	No change to area or polling station

QC	No change to area or polling station
QD	No change to area or polling station
U	Merge with polling district UA. Polling Station - Harris Museum
<i>Part of:</i> UA	No change to area or polling station
<i>Part of:</i> UB	Merge with polling district UA. Polling Station - Harris Museum
<i>Part of:</i> UC	Merge with polling district UA. Polling Station - Harris Museum
WA	No change to area or polling station

Deepdale Ward



A larger version of this map is available in the appendix

The new Deepdale Ward comprises of the current polling districts:

E, EA, MB (part), SA, SB (part)

Information relating to current polling districts and polling places:

Polling District	No. of Electors	No. of Postal Voters	Polling Station Address	Disabled Access
E	2058	304	The Players Lounge, Preston North End FC, Lowthorpe Road, Preston PR1 6RU	Yes
EA	1782	340	St. Gregory's RC School, Blackpool Road, Preston PR1 6HQ	Yes
<i>Part of:</i> MB	591	59	English Martyrs Church, St. Thomas' Room, 18 Garstang Road, Preston PR1 1NA	Yes
SA	1562	231	Preston Quaker Meeting House, 189 St. George's Road, Preston PR1 6NQ	Yes
<i>Part of:</i> SB	0	0	Catherine Beckett Community Centre, Deepdale Enclosure, Deepdale Road, Preston PR1 5AR	Yes

Polling District - E

Area:

No change

Polling Station:

No change. The Players Lounge, Preston North End is easily accessible to electors within the polling district. It is very well know and can be easily seen. It has excellent facilities, disabled access and a very large car park.

Polling District - EA

Area:

No change

Polling Station:

No change. St Gregory's school is situated centrally within the polling district. It has disabled access and is well known to electors.

Part of Polling District - MB

Area:

This polling district has now been divided, with the park area of Moor Park coming under Plungington ward. The majority of electors remain within Deepdale ward, with Moor Park Avenue as the northerly border.

It is proposed to merge this reduced area with polling district SA.

Polling Station:

Once merged with polling district SA, electors will use the Preston Quaker Meeting House polling station which has good road links and is easily accessible to all electors.

Polling District - SA

Area:

No change

Polling Station:

No change. Preston Quaker Meeting House is situated centrally to the majority of electors within the polling district. It has disabled access and is well known to electors.

Part of Polling District - SB

Area:

The part of SB that is included within the ward is a minute area, with no housing within it.

However it cannot be merged with SA as it is in a different division.

Polling Station:

No electorate to require a polling station

Limiting Factors:

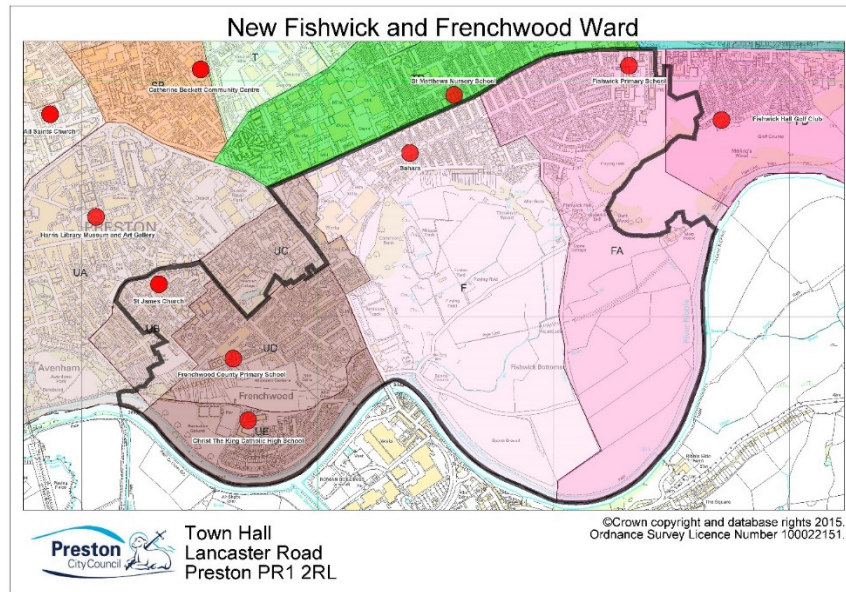
Polling districts E, EA, MB & SA are in Preston Central East Division

Polling district SB is in Preston City Division

Proposals:

Polling District	Proposals
E	No change to area or polling station
EA	No change to area or polling station
<i>Part of:</i> MB	Merge with polling district SA. Polling Station - Quaker Meeting House
SA	No change to area or polling station
<i>Part of:</i> SB	No change to area, no polling station needed

Fishwick & Frenchwood Ward



A larger version of this map is available in the appendix

The new Fishwick & Frenchwood Ward comprises of the current polling districts:

F, FA (part), FB (part), UA (part), UB (part), UC (part), UD, UE

Information relating to current polling districts and polling places:

Polling District	No. of Electors	No. of Postal Voters	Polling Station Address	Disabled Access
F	1451	155	Sahara in Preston, 48 Fishwick Parade, Preston PR1 4XQ	Yes
<i>Part of:</i> FA	1234	144	Fishwick Primary School (Side Entrance, Fishwick Parade, Preston PR1 4RG	Yes
<i>Part of:</i> FB	0	0	Fishwick Hall Golf Club, The Function Room, Glenluce Drive, Preston PR1 5TD	Yes
<i>Part of:</i> UA	0	0	Harris Museum & Art Gallery, Education Room, Market Square, Preston, PR1 2PP	Yes
<i>Part of:</i> UB	751	120	St. James Church, Knowsley Street, off Avenham Lane, Preston PR1 3SA	Yes
<i>Part of:</i> UC	206	45	St. James Church, Knowsley Street, off Avenham Lane, Preston PR1 3SA	Yes

UD	1675	301	Nursery Unit, Frenchwood CP School, Frenchwood Knoll, Preston, PR1 4LE	Yes
UE	479	83	Christ the King Catholic High School, Lawrence Avenue, Preston PR1 4LX	Yes

Polling District - F

Area:

No change

Polling Station:

No change. Sahara is situated centrally to the majority of housing within the polling district. Although very small, it has disabled access and is known to the community.

Part of Polling District - FA

Area:

Polling District FA is now the easterly boundary of this ward, and there are two areas that cross over into Ribbleton Ward.

The north east boundary now runs down Devonshire Place (previously Beaconsfield Avenue). This change will affect the 17 residents of Beaconsfield Avenue who will vote at Fishwick Hall Golf Club in the Ribbleton ward.

The easterly ward boundary now follows a wooded area. No electors are affected by this boundary change.

Polling Station:

No change. We use a separate entrance to part of Fishwick Primary that can be closed off from the main school, to allow the school to remain open. It is a small area but is disability compliant and easily accessible to electors.

Part of Polling District - FB

Area:

The easterly ward boundary now incorporates a small part of polling district FB. There are no electors within this small area.

It is proposed to merge this area of polling district FB with FA.

Polling Station:

No polling station required for this area

Part of Polling District – UA

Area:

This tiny section on the south west edge of polling district UA is now within this ward. It does not contain any properties. It is therefore proposed to merge this with neighbouring polling district UB.

Polling Station:

No polling station required for this area.

Part of Polling District – UB

Area:

This polling district has been split by the new ward boundary, which runs down Berwick Road. The area contained within Fishwick & Frenchwood Ward contains 751 electors.

Polling Station:

No change. St. James Church is the most suitable venue within the polling district. It has good facilities and disabled access.

Part of Polling District –UC

Area:

There are two small areas of this polling district within the Fishwick and Frenchwood Ward Boundary.

Firstly the area to the west of London Road, which is the easterly border of the polling district and boundary.

Secondly a boundary line change - the boundary previously ran along Selborne Street, Mellor Place and part of James Street, but has been changed to run at the back of the houses to include them within the ward.

These two areas contain 206 electors.

It is proposed to merge these two areas with polling district UD.

Polling Station:

The polling station for UD, Frenchwood School is more easily accessible for electors than their previous station (St James Church).

Polling District - UD

Area:

No change

Polling Station:

No change. Frenchwood School is the most suitable building within the polling district. It has disabled access and is well known to electors.

Polling District - UE

Area:

There is a small electorate in this polling district with just 479 electors. It is therefore proposed to merge with the neighbouring polling district UD.

Polling Station:

Once merged, electors to use UD's polling station, Frenchwood School.

Limiting Factors:

Polling districts F, FA, FB are in Preston South East Division

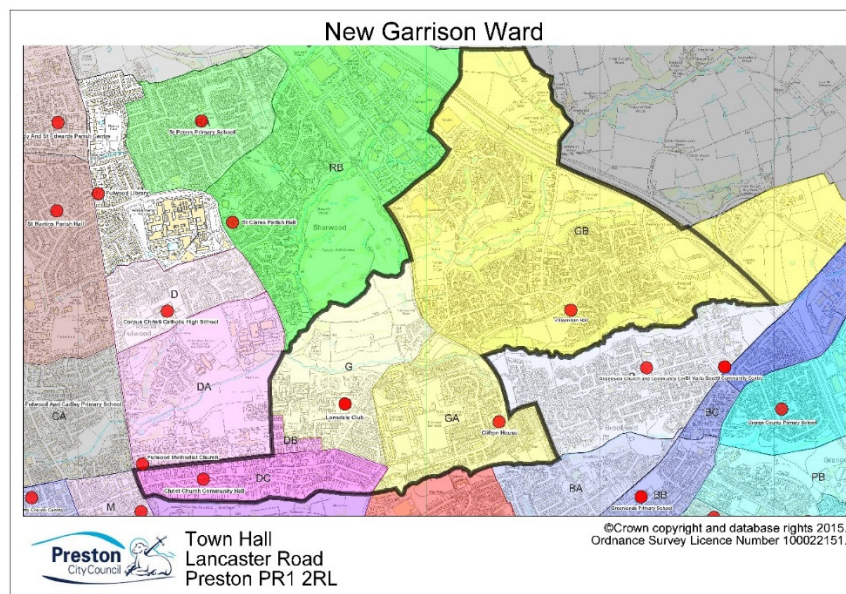
Polling districts UA, UB, UC, UD and UE are in Preston City Division

Proposals:

Polling District	Proposals
F	No change to area or polling station
<i>Part of:</i> FA	No change to area or polling station
<i>Part of:</i> FB	Merge with polling district FA. No Polling Station required.
<i>Part of:</i> UA	Merge with polling district UB. Polling Station - St James Church

<i>Part of:</i> UB	No change to area or polling station
<i>Part of:</i> UC	Merge with polling district UD. Polling Station - Nursery Unit, Frenchwood School
UD	No change to area or polling station
UE	Merge with polling district UD. Polling Station - Nursery Unit, Frenchwood School

Garrison Ward



A larger version of this map is available in the appendix

The new Garrison Ward comprises of the current polling districts: DB, DC, G, GA, GB (part)

Information relating to current polling districts and polling places:

Polling District	No. of Electors	No. of Postal Voters	Polling Station Address	Disabled Access
DB	197	23	Lonsdale Club, Fulwood Hall Lane, Fulwood, Preston PR2 8DA	Yes
DC	1055	176	Christ Church Community Hall, Victoria Road, Preston PR2 8NE	Yes
G	1044	209	Lonsdale Club, Fulwood Hall Lane, Fulwood, Preston PR2 8DA	Yes
GA	1293	213	Clifton House, Lucerne Road (Entrance via Watling Street Road), Fulwood, Preston PR2 8FA	Yes
<i>Part of:</i> GB	3059	688	Millennium Hall, Neapsands Close, Fulwood, Preston PR2 9AQ	Yes

Polling District - DB

Area:

This area is extremely small and only contains 197 electors.

It is proposed to merge this area with polling district DC, resulting in an electorate of 1252.

Polling Station:

The road links are easily accessible for the electors to use the polling station for DC, Christ Church Community Hall.

Polling District - DC

Area:

No change

Polling Station:

No change. Christ Church Community Hall is a good venue. It is situated centrally within the polling district. It has disabled access and is well known to electors.

Polling District - G

Area:

No change

Polling Station:

No change. The Lonsdale Club is central to the majority of electors within this polling district. It is disability compliant and has good parking facilities.

Polling District - GA

Area:

No change

Polling Station:

No change. Clifton House is the most suitable building within the polling district. It has disabled access and is accessible to the majority of electors within the polling district.

Part of Polling District - GB

Area:

The amended part of the boundary line on the east now follows the motorway. This only affects 3 properties (flats belonging to The Norman Jepson) which are now in Ribbleton ward.

Polling Station:

No change. Millennium Hall is situated central to the majority of properties within the polling district. It has disabled access and is well known to electors.

Limiting Factors:

Polling districts DB, DC, GA are in Preston Central East Division

Polling district G is in Preston North Division

Polling district GB is in Preston East Division

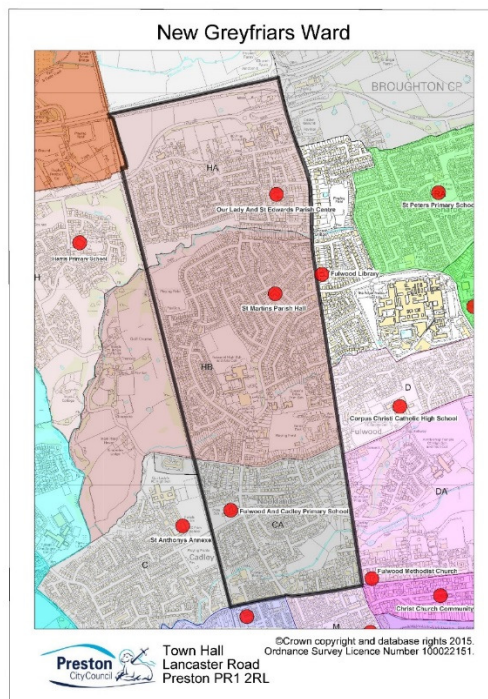
For Parliamentary elections, all are currently in the Wyre & Preston North Constituency

Proposals:

Polling District	Proposals
DB	Merge with polling district DC. Polling Station - Christ Church Community Hall

DC	No change to area or polling station
G	No change to area or polling station
GA	No change to area or polling station
<i>Part of:</i> GB	Amend polling district boundary in line with the ward boundary. No change to polling station

Greyfriars Ward



A larger version of this map is available in the appendix

The new Greyfriars Ward comprises of the current polling districts: CA (part), HA, HB (part)

Information relating to current polling districts and polling places:

Polling District	No. of Electors	No. of Postal Voters	Polling Station Address	Disabled Access
<i>Part of:</i> CA	1796	358	Fulwood & Cadley Primary School, Cadley Causeway, Fulwood, Preston PR2 3QT	Yes
HA	1640	340	Our Lady & St. Edward's Parish Centre, Marlborough Drive, Fulwood, Preston PR2 9UE	Yes
<i>Part of:</i> HB	2813	734	St Martin's Parish Hall, Broadway, Fulwood, Preston PR2 9TH	Yes

Part of Polling District - CA

Area:

The new boundary has removed a small part of this polling district west of the railway line, where Hollybank over 55's residence is situated. The remainder of the polling district is unchanged.

The polling district boundary will be amended to run in line with the ward boundary.

Polling Station:

No change. Fulwood & Cadley School has disabled access and is the most suitable premise within the polling district. It is easily accessible to electors, with parking and is well known to electors.

Polling District - HA

Area:

No change

Polling Station:

No change. Our Lady and St Edwards Parish Centre is the most suitable building located within the polling district. It has disabled access.

Part of Polling District - HB

Area:

The new ward boundary to the west now follows the railway line, thereby moving the houses on Walker Lane into Cadley ward.

The polling district boundary will be amended to run in line with the ward boundary.

Polling Station:

No change. St Martin’s Parish Hall is situated central to the majority of properties within the polling district. It has disabled access and a large car park.

Limiting Factors:

Polling district CA is in Preston Central West Division

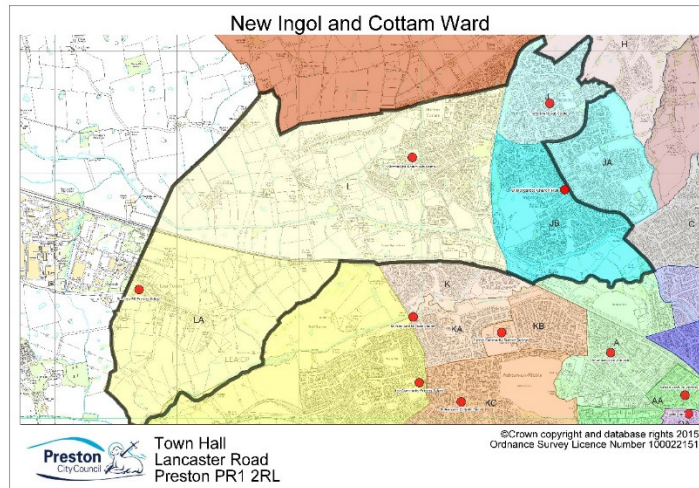
Polling districts HA, HB are in Preston North Division

For Parliamentary elections, all are currently in the Wyre & Preston North Constituency

Proposals:

Polling District	Proposals
<i>Part of:</i> CA	Amend polling district boundary to run in line with the ward boundary. No change to polling station
HA	No change to area or polling station
<i>Part of:</i> HB	Amend polling district boundary to run in line with the ward boundary. No change to polling station

Ingol & Cottam Ward



A larger version of this map is available in the appendix

The new Ingol & Cottam Ward comprises of the current polling districts: J, JB, L, LA

Information relating to current polling districts and polling places:

Polling District	No. of Electors	No. of Postal Voters	Polling Station Address	Disabled Access
J	1696	293	Tanterton Village Centre, Kidsgrove, Ingol, Preston PR2 7BX	Yes
JB	2063	369	St. Margaret's Church Hall, Tag Lane, Ingol, Preston PR2 3ZU	Yes
L	2342	512	Cottam Hall Community Centre, Haydocks Lane, Cottam, Preston PR4 0NY	Yes
LA	173	30	St. Mary's RC Primary School, Darkinson Lane, Lea Town, Preston PR4 0RJ	Yes

Polling District - J

Area:

No change

Polling Station:

No change. Tanterton Village Centre is situated in the centre of the polling district and close to the majority of housing. It has disabled access, parking facilities and is well known to electors.

Polling District - JB

Area:

No change

Polling Station:

No change. St Margaret's Church Hall is situated at the edge of the polling district, but is easily accessible for electors. It has disabled access, a large car park and is well known to electors.

Polling District - L

Area:

No change

Polling Station:

No change. Cottam Hall Community Centre is located in a central position to the majority of properties within the polling district. It has disabled access and parking facilities.

Polling District - LA

Area:

No change

Polling Station:

No change. Lea St Mary's RC Primary School is located at the edge of the polling district but is the most suitable venue within the polling district. It has disabled access and is well known within the area.

Limiting Factors:

All are in Preston West Division

For current Parliamentary boundaries:

Polling districts J and JB are in Preston Constituency

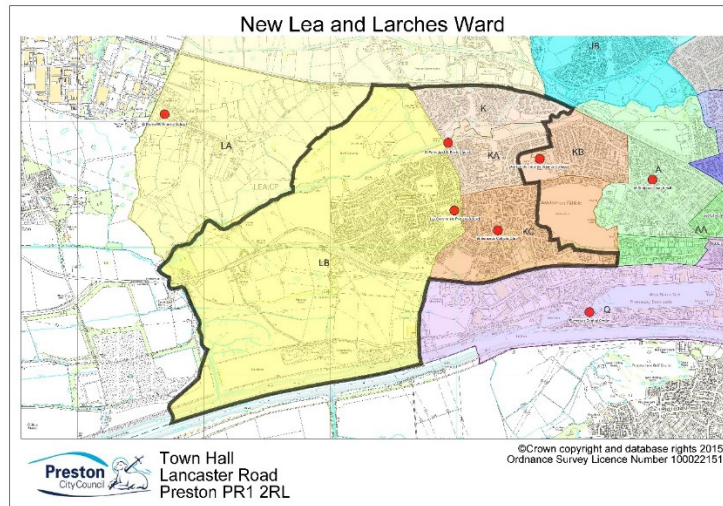
Polling districts L and LA are in Fylde Constituency

Parish Boundaries – Polling districts J & JB now form the Ingol South West & Tanterton Ward of Ingol & Tanterton Neighbourhood Council

Proposals:

Polling District	Proposals
J	No change to area or polling station
JB	No change to area or polling station
L	No change to area or polling station
LA	No change to area or polling station

Lea & Larches Ward



A larger version of this map is available in the appendix

The new Lea & Larches Ward comprises of the current polling districts: K, KA, KC (part), LB

Information relating to current polling districts and polling places:

Polling District	No. of Electors	No. of Postal Voters	Polling Station Address	Disabled Access
K	969	212	St. Peter's & St. Paul's Church, Ainsdale Drive, Preston PR2 1TU	Yes
KA	992	172	No Polling Station (following the closure of Lea Methodist Church)	
<i>Part of:</i> KC	2297	367	St Bernards Catholic Club, Elswick Road, Ashton, Preston PR2 1NT	Yes
LB	2304	442	Lea Community Primary School, Greavestown Lane, Lea, Preston PR2 1PD	Yes

Polling District - K

Area:

No change

Polling Station:

No change. St Peter & St Paul's Church is located at the edge of the polling district but is the most suitable venue within the polling district. It has a small step to enter the building, but a temporary ramp will be provided to ease access issues. It has excellent parking facilities.

Polling District - KA

Area:

No change

Polling Station:

Lea Methodist Church has now closed and we are without a polling station in this area. Officers have visited the area but have not found a suitable alternative.

It is proposed to provide another polling station within St Peter & St Paul’s Church, which is currently used by polling district K. It is on the border of the two polling districts and is easily accessible for electors and has excellent parking facilities.

Part of Polling District - KC

Area:

The new easterly ward boundary removes Ashton Park from this ward, and the row of houses along Blackpool Road that back onto the park.

The majority of the electorate remain in this part of polling district.

Polling Station:

No change. St Bernard’s Club is situated centrally within the polling district. It has disabled access, good parking facilities and is known to electors.

Polling District - LB

Area:

No change

Polling Station:

No change. Lea Community Primary School is the most suitable venue within the polling district. It is easily accessible to majority of housing and has disabled access.

Limiting Factors:

All are in Preston South West Division

For current Parliamentary boundaries:

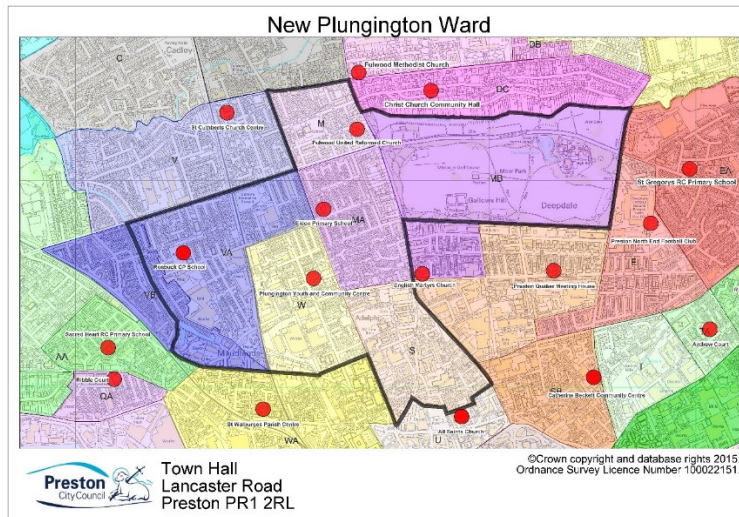
Polling districts K, KA, KC are in Preston Constituency

Polling district LB is in Fylde Constituency

Proposals:

Polling District	Proposals
K	No change to area or polling station
KA	No change to area. Polling Station – St Peter & St Paul’s Church
<i>Part of:</i> KC	No change to area or polling station
LB	No change to area or polling station

Plungington Ward



A larger version of this map is available in the appendix

The new Plungington Ward comprises of the current polling districts:

M, MA, MB (part), S, VA, VB (part), W

Information relating to current polling districts and polling places:

Polling District	No. of Electors	No. of Postal Voters	Polling Station Address	Disabled Access
M	828	117	Fulwood United Reformed Church, Symonds Road, Fulwood, Preston PR2 3BL	Yes
MA	1598	242	Eldon Primary School, Eldon Street, Preston PR1 7YE	Yes
<i>Part of:</i> MB	4	2	English Martyrs Church, St. Thomas' Room, 18 Garstang Road, Preston PR1 1NA	Yes
S	795	63	All Saints Church, Melbourne Street Entrance, Preston PR1 2RX	Yes
VA	1609	211	Sports Hall – Parker Street, Roebuck CP School, Preston PR2 2AH	Yes
<i>Part of:</i> VB	281	39	Sports Hall – Parker Street, Roebuck CP School, Preston PR2 2AH	Yes
W	833	89	Plungington Youth & Community Centre, Brook Street, Preston PR1 7NB	Yes

Polling District - M

Area:

No change

Polling Station:

No change. Fulwood United Reformed Church provides suitable accommodation within the polling district. It has disabled access and car parking facilities.

Polling District - MA

Area:

No change

Polling Station:

No change. Eldon Primary School is situated centrally within the polling district. It has disabled access and is well known to electors.

Part of Polling District - MB

Area:

This part of the polling district is the area north of Moor Park Avenue and covers the whole of Moor Park. There are only 2 properties in this area, West Lodge on the westerly border facing Garstang Road and North Lodge on the northerly border facing Blackpool Road. Due to the low electorate, it is proposed to merge this area with Polling District MA.

Polling Station:

Merge with MA and use their polling station, Eldon Primary School.

Polling District - S

Area:

No change

Polling Station:

Following the closure of Heritage Church (formerly Elim Pentecostal Church) the electorate have been sharing with All Saints Church situated in polling district U in the City Centre, which is recommended later in the report for merging with another station due to low electorate and turnout.

Polling district S has an electorate of 795 and to keep the electorate voting within the ward boundaries it is proposed to merge stations with polling district W, with electors voting at Plungington Youth & Community Centre.

Polling District - VA

Area:

No change

Polling Station:

No change. The Sports Hall at Parker Street (part of Roebuck CP School) is situated centrally to the majority of electors within the polling district. It has disabled access, and is well known to electors.

Part of Polling District - VB

Area:

The new boundary splits polling district VB, with the westerly ward boundary now running down the canal.

This part of VB contains 281 electors. It is proposed to merge this part of polling district VB with VA.

Polling Station:

No change. Continue to use The Sports Hall, Roebuck School, where electors currently vote.

Polling District - W

Area:

No change

Polling Station:

No change. Plungington Youth & Community Centre is situated centrally within the polling district. It has disabled access and is well known to electors in the community.

Limiting Factors:

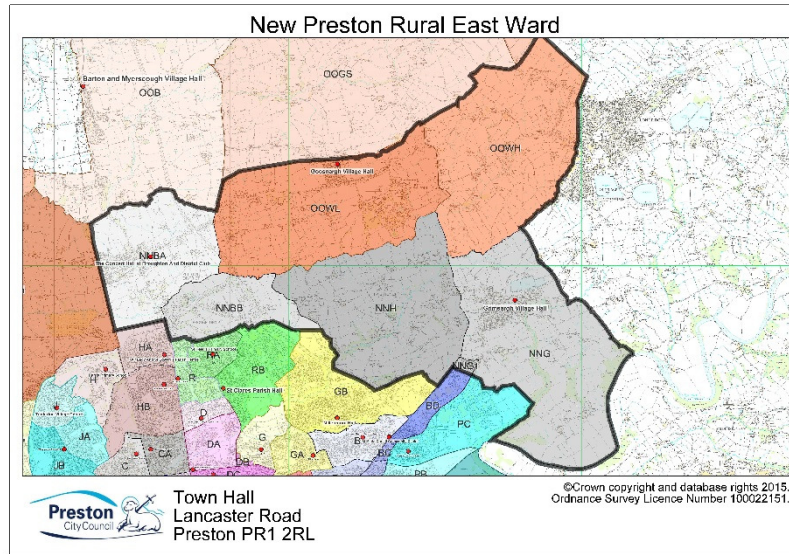
Polling districts M, S, VA, VB, W are in Preston Central West Division

Polling districts MA, MB are in Preston Central East Division

Proposals:

Polling District	Proposals
M	No change to area or polling station
MA	No change to area or polling station
<i>Part of:</i> MB	Merge with polling district MA. Polling Station - Eldon Primary School
S	No change to area. Polling Station - Plungington Youth & Community Centre
VA	No change to area or polling station
<i>Part of:</i> VB	Merge with polling district VA. No change to polling station.
W	No change to area or polling station

Preston Rural East Ward



A larger version of this map is available in the appendix

The new Preston Rural East Ward comprises of the current polling districts:
NNBA, NNBB, NNG, NNG1, NNH, OOWH, OOWL

Information relating to current polling districts and polling places:

Polling District	No. of Electors	No. of Postal Voters	Polling Station Address	Disabled Access
NNBA	1215	286	The Concert Hall, Broughton & District Club, Whittingham Lane, Broughton, Preston PR3 5DA	Yes
NNBB	242	66	The Concert Hall, Broughton & District Club, Whittingham Lane, Broughton, Preston PR3 5DA	Yes
NNG	1791	357	Grimsargh Village Hall, Preston Road, Grimsargh Preston PR2 5SJ	Yes
NNG1	228	48	Grimsargh Village Hall, Preston Road, Grimsargh Preston PR2 5SJ	Yes
NNH	164	41	Grimsargh Village Hall, Preston Road, Grimsargh Preston PR2 5SJ	Yes
OOWH	668	200	Goosnargh Village Hall, Church Lane, Goosnargh, Preston PR3 2BD	Yes

OOWL	1232	292	Goosnargh Village Hall, Church Lane, Goosnargh, Preston PR3 2BD	Yes
-------------	-------------	------------	---	------------

Polling District - NNBA

Area:

No change

Polling Station:

No change. The Concert Hall at Broughton & District Club is situated centrally within the polling district. It has disabled access, good parking facilities and is well known to electors.

Polling District - NNBB

Area:

No change

Polling Station:

No change. This polling district currently shares premise with NNBA using The Concert Hall, Broughton & District Club. It is well known in the area and accessible to electors. It has ample parking and disabled access.

Polling District - NNG

Area:

No change

Polling Station:

No change. Grimsargh Village Hall is located centrally to the majority of properties within the polling district. It has disabled access, a large car park and is well known to electors.

Polling District – NNG1

Area:

No change

Polling Station:

No change. Although just outside this small polling district, Grimsargh Village Hall is accessible to electors. It has disabled access, a large car park and is well known to electors.

Polling District - NNH

Area:

No change

Polling Station:

No change. The electors from this area use Grimsargh Village Hall which is within polling district NNG. It is accessible to electors. It has disabled access, a large car park and is well known to electors.

Polling District - OOWH

Area:

The new boundaries have brought this polling district into this ward from Preston Rural North ward.

Polling Station:

No change. Goosnargh Village Hall, although situated outside the polling district, is accessible to electors. It has disabled access, car parking and is well known to electors.

Polling District - OOWL

Area:

The new boundaries have brought this polling district into this ward from Preston Rural North ward.

Polling Station:

No change. Goosnargh Village Hall, is accessible to electors within this polling district. It has disabled access, car parking and is well known to electors.

Limiting Factors:

All are in Preston Rural Division

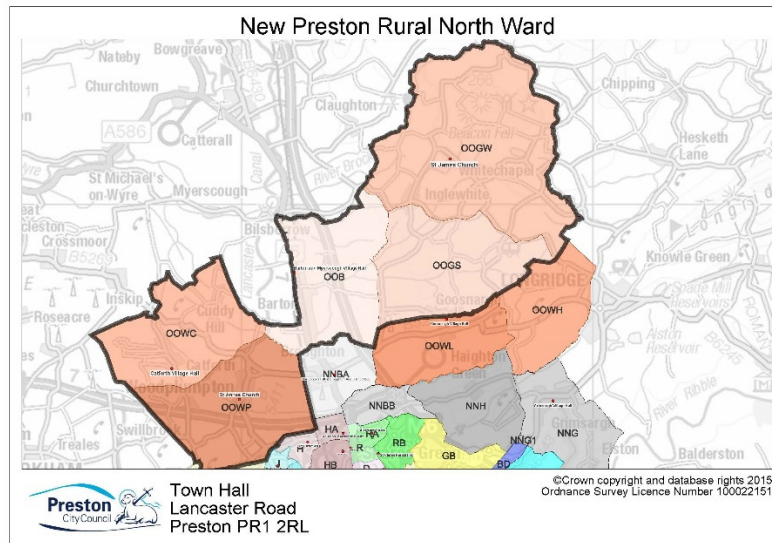
For current Parliamentary boundaries, all polling districts are in Wyre & Preston North Constituency

Parish Boundaries – No changes can be made to existing polling district boundaries as they form the parish and ward boundaries

Proposals:

Polling District	Proposals
NNBA	No change to area or polling station
NNBB	No change to area or polling station
NNG	No change to area or polling station
NNG1	No change to area or polling station
NNH	No change to area or polling station
OOWH	No change to area or polling station
OOWL	No change to area or polling station

Preston Rural North Ward



A larger version of this map is available in the appendix

**The new Preston Rural North Ward comprises of the current polling districts:
OOB, OOGS, OOGW, OOWC, OOWP**

Information relating to current polling districts and polling places:

Polling District	No. of Electors	No. of Postal Voters	Polling Station Address	Disabled Access
OOB	1010	257	Barton & Myerscough Village Hall, 852 Garstang Road, Barton, Preston PR3 5AA	Yes
OOGS	487	84	Goosnargh Village Hall, Church Lane, Goosnargh, Preston PR3 2BD	Yes
OOGW	587	161	The Beacon Room, St James Church, Church Lane, Whitechapel, Preston PR3 2EP	Yes
OOWC	514	125	Catforth Village Hall, Catforth Road, Catforth, Preston PR4 0HL	Yes
OOWP	1655	390	St Annes Church, Parish Room, Woodplumpton Road, Woodplumpton, Preston PR4 0NE	Yes

Polling District - OOB

Area:

No change

Polling Station:

No change. Barton & Myerscough Village Hall located at the edge of the polling district. It is well known in the area, has disabled access, excellent car parking and is accessible to electors.

Polling District - OOGS

Area:

No change

Polling Station:

No change. This area shares a station with polling districts OOWL and OOWH. Goosnargh Village Hall, which due to the boundary changes is now located in Preston Rural East ward, is accessible to electors within the polling district, has disabled access, car parking and is well known to electors. The premise is large enough to house multiple polling stations.

Polling District - OOGW

Area:

No change

Polling Station:

No change. St James Church in Whitechapel is situated centrally for electors within the polling district. It has disabled access, parking and is well known to electors.

Polling District - OOWC

Area:

No change

Polling Station:

No change. The polling station, Catforth Primary School, is situated centrally for the majority of electors in the polling district. It has disabled access and is well known in the area.

Polling District - OOWP

Area:

No change

Polling Station:

No change. St Annes Church, Parish Rooms are situated centrally within the polling district. They have disabled access, parking facilities and are well known to electors.

Limiting Factors:

All polling districts are in Preston Rural Division

For current Parliamentary boundaries, all are in Wyre & Preston North Constituency

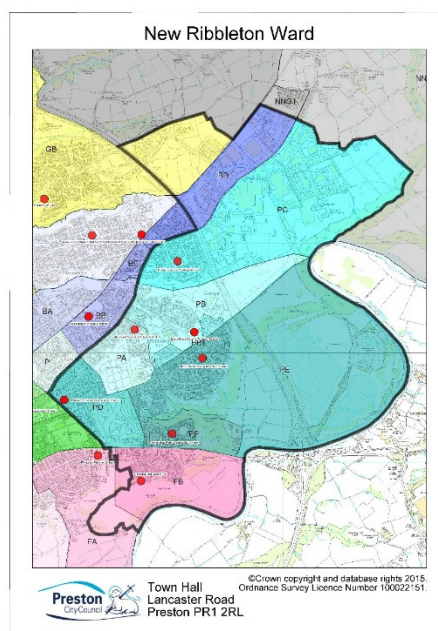
Parish Boundaries – No changes can be made to existing polling district boundaries as they form the parish and ward boundaries

Proposals:

Polling District	Proposals
OOB	No change to area or polling station

OOGS	No change to area or polling station
OOGW	No change to area or polling station
OOWC	No change to area or polling station
OOWP	No change to area or polling station

Ribbleton Ward



A larger version of this map is available in the appendix

The new Ribbleton Ward comprises of the current polling districts: BD (part), FA (part), FB (part), GB (part), PA, PB, PB1, PC, PD, PE, PF

Information relating to current polling districts and polling places:

Polling District	No. of Electors	No. of Postal Voters	Polling Station Address	Disabled Access
<i>Part of:</i> BD	0	0	St. Maria Goretti Community Centre, Gamull Lane, Ribbleton, Preston PR2 6SJ	No
<i>Part of:</i> FA	17	2	Fishwick Primary School (Side Entrance, Fishwick Parade, Preston PR1 4RG	Yes
<i>Part of:</i> FB	745	128	Fishwick Hall Golf Club, The Function Room, Glenluce Drive, Preston PR1 5TD	Yes
<i>Part of:</i> GB	1	0	Millennium Hall, Neapsands Close, Fulwood, Preston PR2 9AQ	Yes
PA	558	99	Blessed Sacrament Social Club, Moorside Avenue, Ribbleton, Preston PR2 6LU	Yes - Partial
PB	576	112	Moor Nook CP School, Ribbleton Hall Drive, Preston PR2 6EE	Yes

PB1	223	52	Moor Nook CP School, Ribbleton Hall Drive, Preston PR2 6EE	Yes
PC	888	119	Grange CP School, Grange Avenue, Ribbleton, Preston PR2 6PS	Yes
PD	885	109	Willow Crescent Community House, 28/30 Willow Crescent, Ribbleton, Preston PR2 6PB	Yes
PE	1593	203	Moor Nook Young People's Centre, Burholme Road, Ribbleton, Preston PR2 6HN	Yes
PF	367	67	Farringdon Park Community Centre, 18-24 Thirlmere Road, Farringdon Park, Preston PR1 5TR	Yes

Part of Polling District - BD

Area:

The boundary change has divided this polling district at the M6 motorway. The part of the polling district retained in this ward is purely commercial / business premises.

It is proposed to merge this part of polling district BD into PC.

Polling Station:

No polling station required for this part as there are no residential properties

Part of Polling District - FA

Area:

There are two small areas on the westerly boundary that are now included in this ward. The northerly end of the polling district boundary now runs down Devonshire Place (previously Beaconsfield Avenue). The 17 residents of Beaconsfield Avenue will be affected by this change and are now part of this ward.

The easterly ward boundary now follows a wooded area. No electors are affected by this boundary change.

It is proposed to merge these two small areas into polling district FB.

Polling Station:

Once merged, it is proposed to use FB's polling station, The Function Room at Fishwick Hall Golf Club which is disability compliant, with excellent parking facilities.

Part of Polling District - FB

Area:

A small part of FB on the western boundary, which does not contain any housing, has been moved to Fishwick & Frenchwood ward. All the electors in the remaining area are contained within this ward.

Polling Station:

No change. The Function Room at Fishwick Hall Golf Club is disability compliant, with excellent parking and is known within the area.

Part of Polling District - GB

Area:

This is a small part of polling district GB north east of the motorway. It is mainly commercial / business premise except for the Norman Jepson pub which has 3 flats attached to it, only one of which is currently occupied. This area will be retained as a separate polling district, due to parliamentary boundary constraints.

Polling Station:

It is proposed to use PC's polling station for this area - Grange CP School.

Polling District - PA

Area:

No change

Polling Station:

No change. Blessed Sacrament Social Club is situated centrally to the majority of properties within the polling district and is well known to electors. The station is accessed by steps, however there is an alternative door available for disabled access and signed access instructions for electors with accessibility issues is provided.

Polling District - PB

Area:

No change

Polling Station:

No change. Moor Nook CP School is the most suitable location within polling district. It has disabled access and is well known to electors.

Polling District – PB1

Area:

This area was created during a Lancashire County Council boundary review. It is proposed to merge this area with polling district PE.

Polling Station:

Following the merger, we would use PE's polling station, Moor Nook CP School as explained in more detail under polling district PE.

Polling District - PC

Area:

No change

Polling Station:

No change. Grange CP School is central to the majority of electors in the area. It has disabled access and is well known to electors.

Polling District - PD

Area:

No change

Polling Station:

No change. Willow Crescent Community House is in the heart of the community. It has disabled access and is easily accessible within the polling district.

Polling District - PE

Area:

No change

Polling Station:

Moor Nook Young People’s Centre historically has a very low voting rate with the last local election polling just a 9% turnout (136 electors)

It is proposed to share premises with polling district PB, Moor Nook School, which is situated just across Pope Lane so is easily accessible for electors and is a large enough to accommodate both areas.

Polling District - PF

Area:

The electorate in this area is very small, 367 electors. It is proposed to merge this polling district with the adjacent polling district PD to form an area with an electorate of 1252 electors.

Polling Station:

We currently use Farrington Park Community Centre, however when merged with PD we would use their polling station, Willow Crescent.

Limiting Factors:

Polling districts FA, FB, PB1, PD, PE, PF are in Preston South East Division

Polling districts BD, GB, PA, PB, PC are in Preston East Division

For current Parliamentary boundaries, all are in Preston Constituency

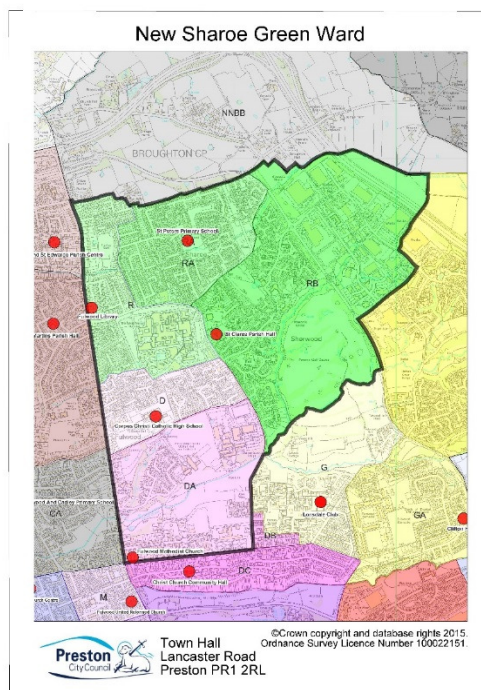
Except for GB which is in Wyre & Preston North Constituency

Proposals:

Polling District	Proposals
<i>Part of:</i> BD	Merge with polling district PC. No polling station required.
<i>Part of:</i> FA	Merge with polling district FB. Polling Station – Fishwick Hall Golf Club
<i>Part of:</i> FB	No change to area or polling station
<i>Part of:</i> GB	No change to area. Polling station – Grange CP School
PA	No change to area or polling station
PB	No change to area or polling station
PB1	Merge with polling district PE. Polling station – Moor Nook School

PC	No change to area or polling station
PD	No change to area or polling station
PE	No change to area. Polling station – Moor Nook School
PF	Merge with polling district PD. Polling Station - Willow Crescent Community Centre

Sharoe Green Ward



A larger version of this map is available in the appendix

The new Sharoe Green Ward comprises of the current polling districts:

D, DA, R, RA, RB

Information relating to current polling districts and polling places:

Polling District	No. of Electors	No. of Postal Voters	Polling Station Address	Disabled Access
D	862	234	Corpus Christi Catholic High School, Caretaker's House, St Vincents Road, Fulwood, Preston PR2 8QY	Partial Yes
DA	659	151	Fulwood Methodist Church (Rear Entrance, Sycamore Room), Highgate Avenue, Fulwood, Preston PR2 8EA	Yes
R	960	239	Fulwood Library, 294 Garstang Road, Fulwood, Preston PR2 9RX	Yes
RA	2207	480	St. Peter's CE Primary School, Meadowfield, Fulwood, Preston PR2 9RE	Yes
RB	1594	392	St. Clare's Parish Hall, Sharoe Green Lane, Fulwood, Preston PR2 9HH	Yes

Polling District - D

Area:

No change

Polling Station:

We currently use a separate building (previously the Caretaker's house) inside the gates of Corpus Christi School. The building is not suitable for wheelchairs as there is small step to enter the premises.

The school have advised that they will be installing security gates to the school entrance, which will be in operation during school hours. The gates will be controlled via the school's reception meaning electors have to use an intercom to be allowed entry, which could deter or prevent electors from voting. It is not possible to isolate a gate for separate entry. The school cannot close due to the GCSE exam timetable.

Given the spread of housing within the area it is impossible to find a premise convenient for all, however an alternative and very suitable building has been identified which is within the polling district. The Tabor Retreat on Sharoe Green Lane. It is an excellent building with good parking facilities and wide doors to allow entry for mobility scooters. The new owners would be happy for us to use the centre as a polling station.

Polling District - DA

Area:

No change

Polling Station:

No change. Fulwood Methodist Church is situated within easy reach of electors in the polling district. It has good disabled access, parking and is well known to electors.

Polling District - R

Area:

No change

Polling Station:

No change. Fulwood Library is situated centrally within the polling district. It has disabled access and is well known to electors.

Polling District - RA

Area:

No change

Polling Station:

No change. St Peter's Primary School is situated centrally within the polling district. It has disabled access, limited parking and is well known to electors.

Polling District - RB

Area:

No change

Polling Station:

No change. St Clare's Parish Hall is a very suitable venue within the polling district. It is easily accessed, has disabled access, ample parking and is well known to electors.

Limiting Factors:

Polling districts D, R, RA, RB are in Preston North Division

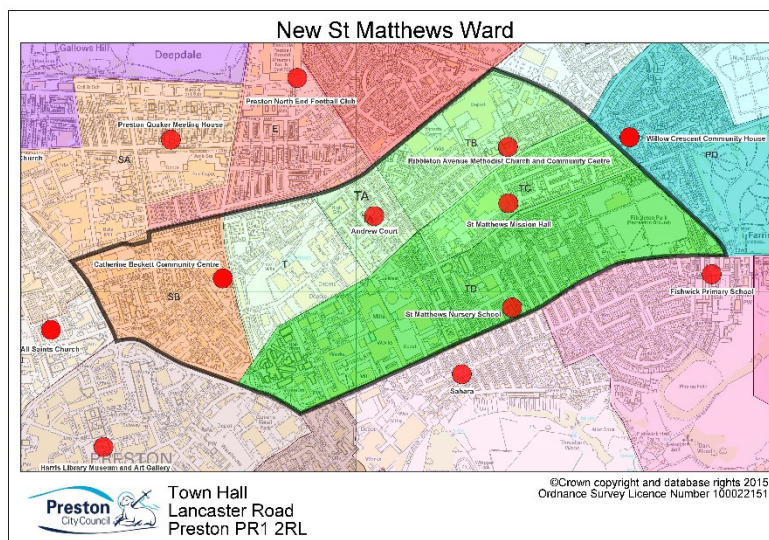
Polling district DA is in Preston Central East Division

For current Parliamentary boundaries, all are in Wyre & Preston North Constituency

Proposals:

Polling District	Proposals
D	No change to area. Polling station - The Tabor Retreat
DA	No change to area or polling station
R	No change to area or polling station
RA	No change to area or polling station
RB	No change to area or polling station

St Matthews Ward



A larger version of this map is available in the appendix

The new St Matthews Ward comprises of the current polling districts: SB (part), T, TA, TB, TC, TD

Information relating to current polling districts and polling places:

Polling District	No. of Electors	No. of Postal Voters	Polling Station Address	Disabled Access
<i>Part of:</i> SB	973	132	Catherine Beckett Community Centre, Deepdale Enclosure, Deepdale Road, Preston PR1 5AR	Yes
T	471	71	Catherine Beckett Community Centre, Deepdale Enclosure, Deepdale Road, Preston PR1 5AR	Yes
TA	436	52	Andrew Court, 36 Gillett Street, Preston PR1 5HX	Yes
TB	855	113	Ribbleton Avenue Methodist Church and Community Centre, Ribbleton Avenue, Preston PR1 5RU	Yes
TC	883	128	St Matthew's Mission, Acregate Lane, Preston, PR1 5QQ	Yes
TD	1857	212	St. Matthew's Nursery School, Junction of Maitland Street and Cuttle Street, Preston PR1 5XB	Yes

Part of Polling District SB

Area:

There is a minute part of the northerly border of SB which will be included within the Deepdale Ward, but there are no houses in this area. The remainder of the polling district is unchanged.

Polling Station:

No change. Catherine Beckett Community Centre is situated centrally to the majority of electors within the polling district. It has disabled access and is well known to electors.

Polling District - T

Area:

No change

Polling Station:

No change. Catherine Beckett Community Centre lies on the border of this area and the neighbouring polling district of SB. It is easily accessible to the majority of electors within the polling district. It has disabled access and is well known to electors.

Polling District - TA

Area:

TA is a relatively small area with 436 electors, it is proposed to merge this polling district with TB, creating an area with 1291 electors.

Polling Station:

We currently use Andrew Court, however when merged with TB we would use their polling station, Ribbleton Avenue Methodist Church & Community Centre.

Polling District - TB

Area:

No change

Polling Station:

No change. Ribbleton Avenue Methodist Church and Community Centre is the most suitable location within the polling district. It is accessible to the electors within this polling district. It has disabled access and is well known to electors.

Polling District – TC

Area:

No change

Polling Station:

No change. St Matthew's Mission is situated centrally to the majority of electors within the polling district. It has disabled access and is well known to electors.

Polling District - TD

Area:

No change

Polling Station:

No change. St Matthew's Nursery School is easily accessible for the majority of electors within the polling district. It has disabled access and is well known to electors.

Limiting Factors:

Polling district SB is in Preston City Division

Polling districts T, TA, TB, TC, TD are in Preston South East Division.

Proposals:

Polling District	Proposals
<i>Part of:</i> SB	No change to area or polling station
T	No change to area or polling station
TA	Merge with polling district TB. Polling Station - Ribbleton Avenue Methodist Church & Community Centre
TB	No change to area or polling station
TC	No change to area or polling station
TD	No change to area or polling station

