

# Recycling Sorting Game

Do you know which bin you should use when you throw something away? Play this recycling sorting game to find out!

## How to play

1. Make your bins with the templates provided. You should have a grey bin, red lidded bin, yellow lidded bin and a Recycling Centre skip.
2. Cut out all of the squares below.
3. Now see if you can put each item in the correct bin. Be careful though, some of them will need to go to the Recycling Centre to be recycled.

## Bin template instructions

1. Carefully **cut** around the **solid lines**
2. **Fold** the paper along the **dotted lines**
3. Glue or tape the side and bottom tabs and fold into shape

## What you will need



Scissors



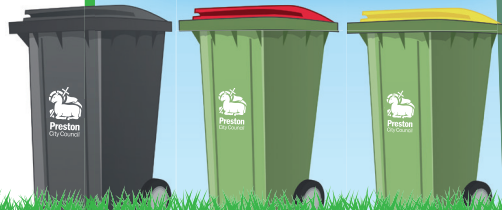
Glue



or

Sticky Tape

Recycling is much better for the environment and we should try and recycle as much as we can!



[www.preston.gov.uk/recycleitems](http://www.preston.gov.uk/recycleitems)

 Cards	 Leftover Food	 Plastic Tubs, Pots & Trays	 Tissues / Wipes	 Meat Tray	 Crisp/Sweet Packets	 Empty Pizza Boxes	 Electricals
 Plastic Bags	 Biscuit/Sweet Tins	 Plastic Film	 Cereal Boxes	 Wallpaper	 Plant Pots	 Takeaway Cups	 Clothing & Shoes
 Nappies	 Yoghurt Tubs	 Polystyrene	 Pots & Pans	 Clean Foil	 Masks	 Cardboard Boxes	 Books
 Hard Plastic	 Envelopes	 Scrap Metal	 Plastic Bottles	 Newspapers	 Glass & Crockery	 Toilet/Kitchen Roll Tubes	 Glass Bottles & Jars
 Food & Drink Cans	 Bubble Wrap	 Paper	 Cartons	 Batteries	 Empty Aerosols	 <b>Preston</b> City Council	

# Grey Bin Template

- **Cut** the solid lines
- - - - **Fold** the dotted lines



# Red Lidded Bin

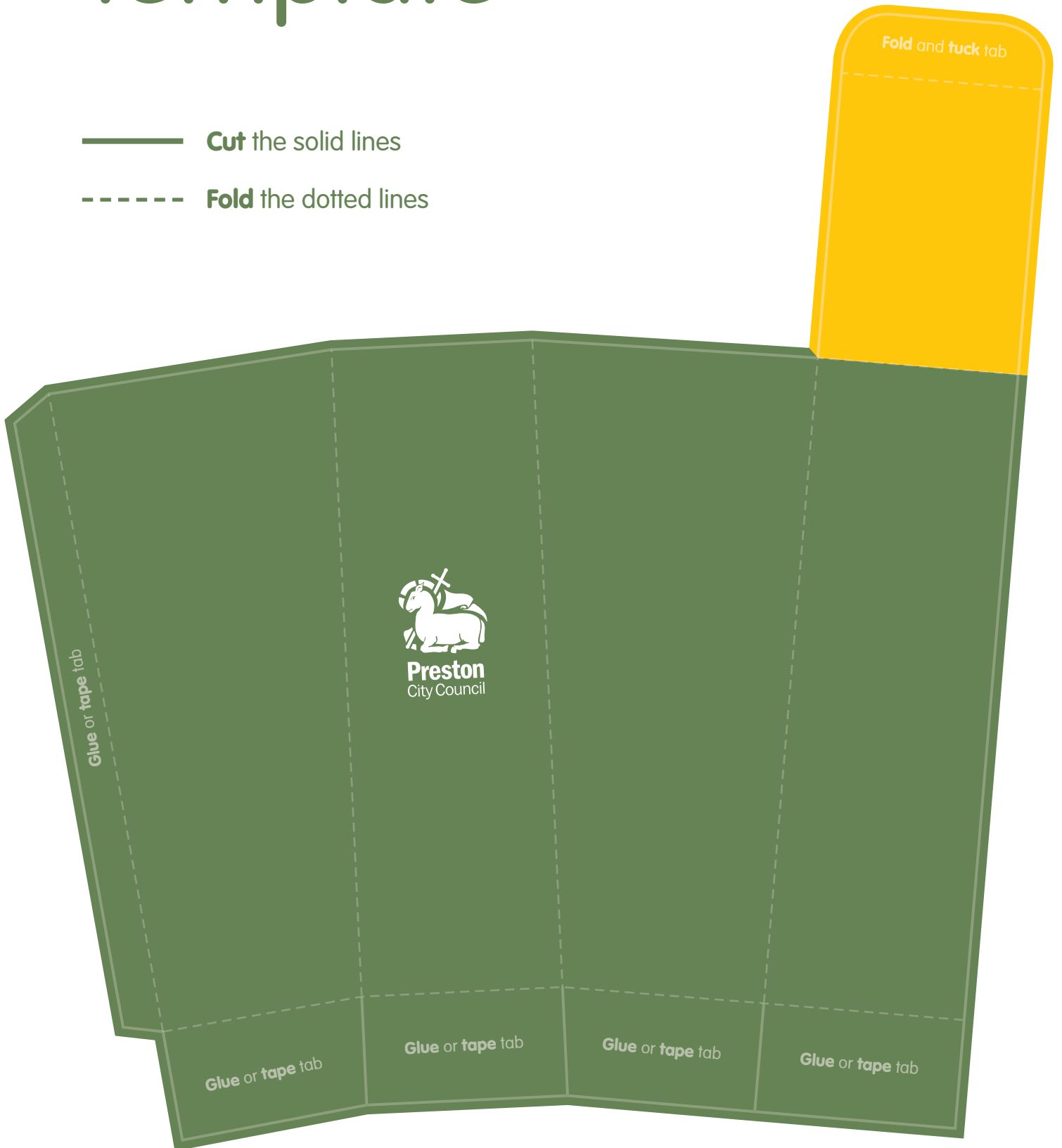
## Template

- **Cut** the solid lines
- - - - **Fold** the dotted lines



# Yellow Lidded Bin Template

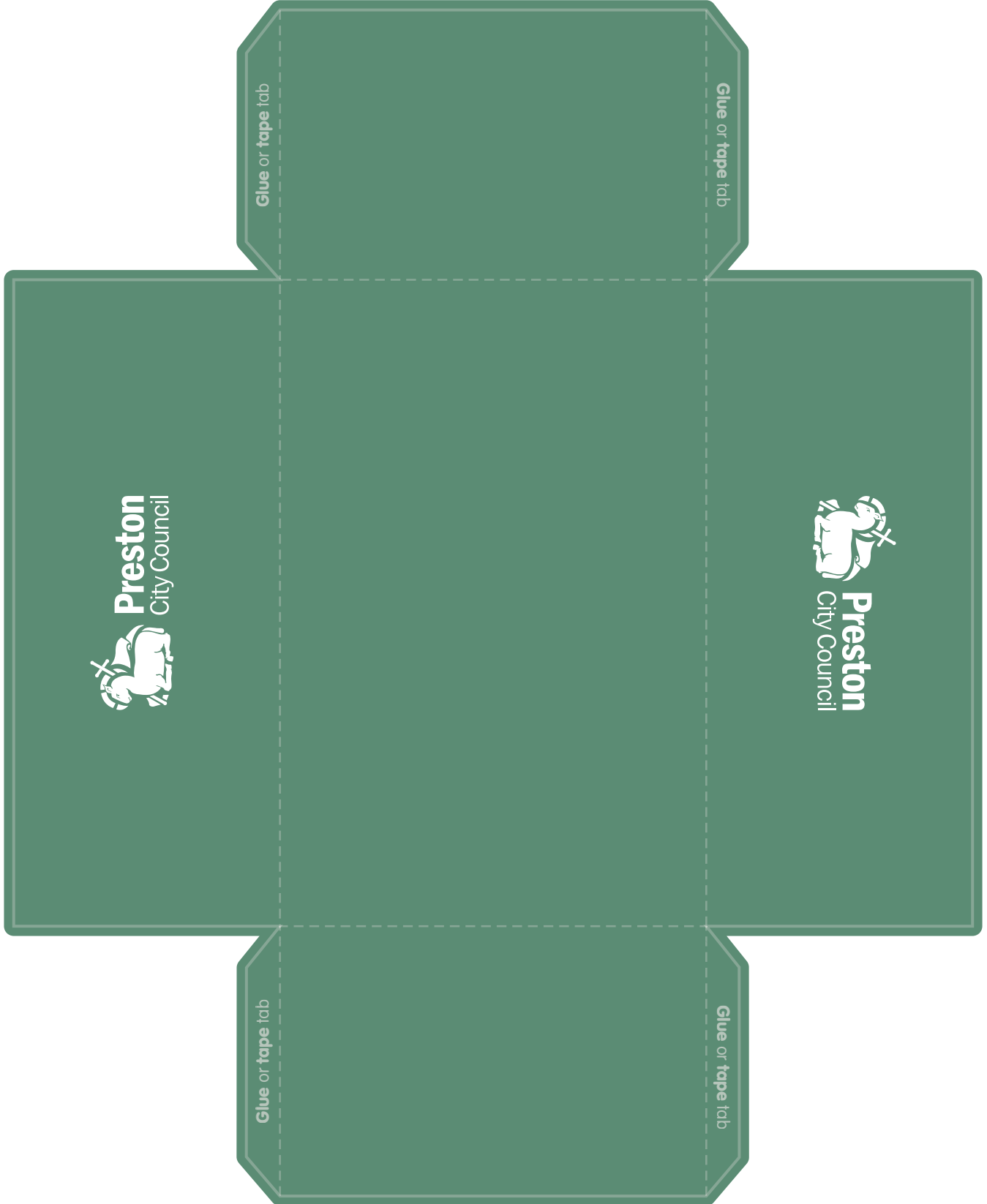
- **Cut** the solid lines
- - - - **Fold** the dotted lines



# Recycling Centre Bin

## Template

- Cut the solid lines
- - - - - Fold the dotted lines



**ANSWERS:**  
**Grey bin** - glass and crockery, plastic film, nappies, pots and pans, tissues/wipes, takeaway cups, leftover food, masks, crisp/sweet packets, polystyrene, plastic bags, bubble wrap, wallpaper.  
**Red lidded bin** - cards, newspapers, envelopes, cardboard boxes, empty pizza boxes, paper, toilet/kitchen roll tubes.  
**Yellow lidded bin** - yoghurt tubs, meat tray, food & drink cans, plastic tubs, pots & trays, clean foil, empty aerosols, plant pots, biscuit/sweet tins, plastic bottles, glass bottles & jars.  
**Recycling centre bin** - hard plastic, scrap metal, cartons, batteries, electricals, clothing & shoes, books.