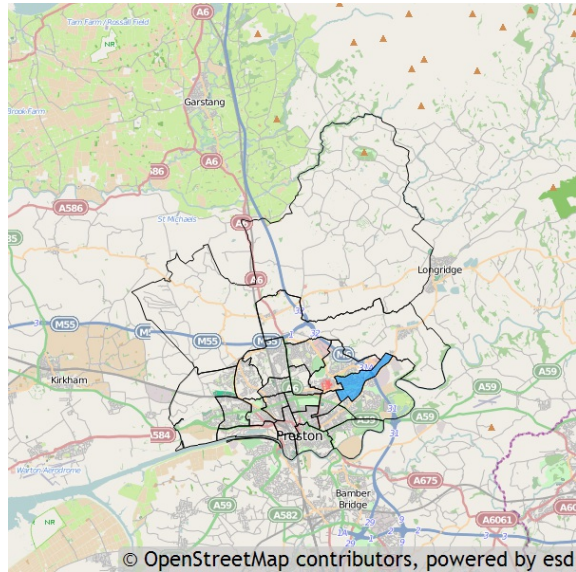


Basic facts about Brookfield

Brookfield is one of the 22 wards of Preston. It has an area of 192.06 hectares which represents 1.34% of the total local authority area of Preston.

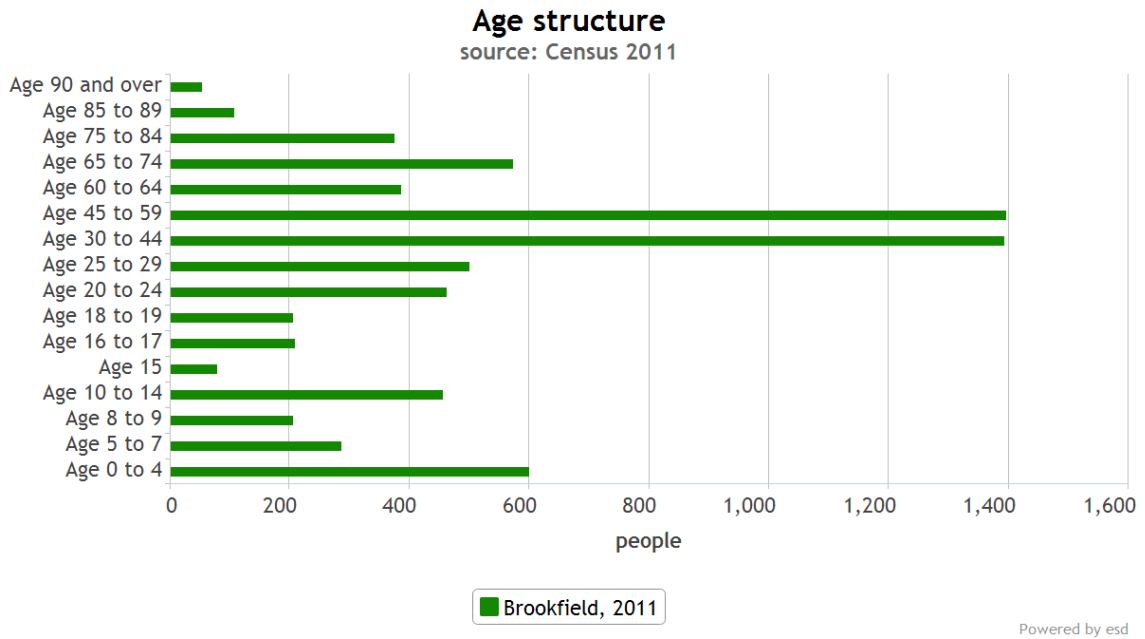


Residents

Brookfield has a resident population of 7,301 which represents 5.21% of the total local authority resident population of 140,202.

Age

The mean age of the Brookfield population is 38 years which is older than the mean age of 37 years for residents in the whole local authority. The predominant age band is Age 45 to 59.

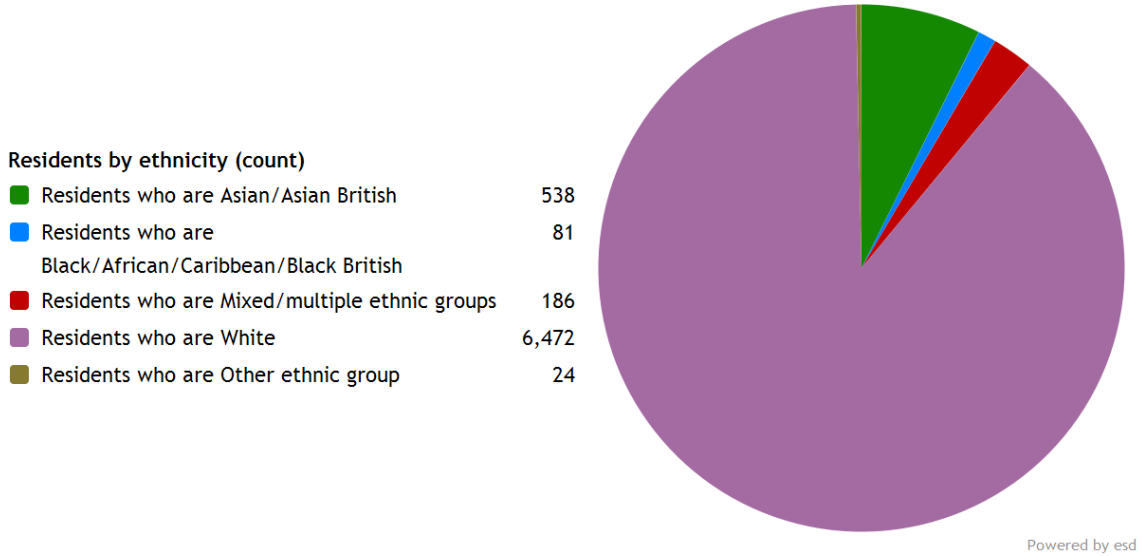


Ethnicity

The largest ethnic group is *Residents who are White* with 88.6% of the ward's population. That compares with 80.2% for the local authority as a whole, 90.2% for North West and 85.4% for the whole of England.

The second largest ethnic group is *Residents who are Asian/Asian British* with 7.4% of the ward's population. That compares with 15.5% for the local authority as a whole, 6.2% for North West and 7.8% for the whole of England.

The ethnic split of Brookfield's residents is shown below.



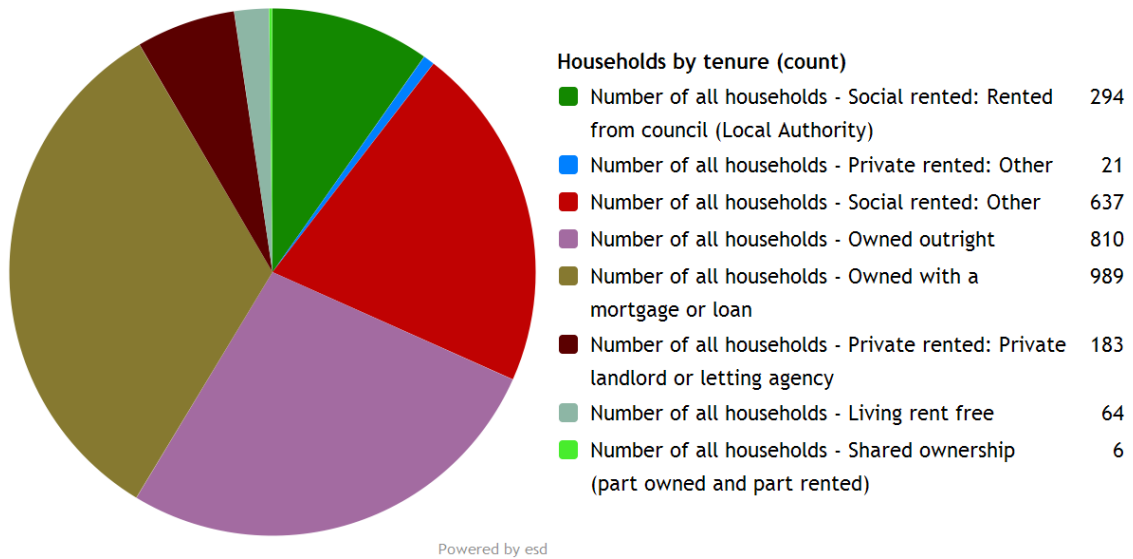
Brookfield's resident population is 52.0% female and 48.0% male.

The ward has 482 households with **dependent children aged 0 to 4**. That represents 16.05% of the ward's households.

1,038 households in the ward have **dependent children of all ages**. That represents 34.55% of the ward's households.

Households

Brookfield has 3,004 households, which represent 5.22% of Preston's 57,567 households. The household split by tenure is shown below.



The largest number of households lives in *Number of all households - Owned with a mortgage or loan* accommodation with 32.9% of the ward's households. That compares with 32.2% for the local authority as a whole, 33.2% for North West and 34.5% for the whole of England.

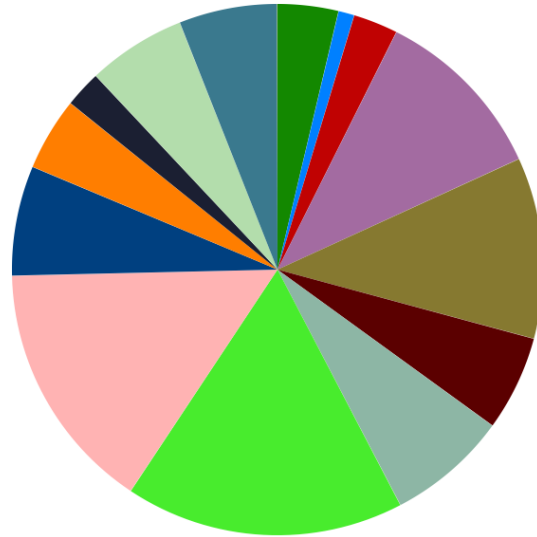
The second largest number of households lives in *Number of all households - Owned outright* accommodation with 27.0% of the ward's households. That compares with 28.4% for the local authority as a whole, 28.6% for North West and 32.8% for the whole of England.

Employment

A breakdown of Brookfield by socio-economic classification is given below.

Residents by NS-Sec (count)

NS-Sec: Higher managerial, administrative and professional	227
NS-Sec: Large employers and higher managerial and administrative	60
NS-Sec: Higher professional	167
NS-Sec: Lower managerial, administrative and professional	661
NS-Sec: Intermediate	677
NS-Sec: Small employers and own account workers	356
NS-Sec: Lower supervisory and technical	451
NS-Sec: Semi-routine occupations	1,042
NS-Sec: Routine occupations	940
NS-Sec: Never worked and long-term unemployed	410
NS-Sec: Never worked	273
NS-Sec: Long-term unemployed	137
NS-Sec: Not classified	368
NS-Sec: Full-time students	368
NS-Sec: Not classifiable for other reasons	0

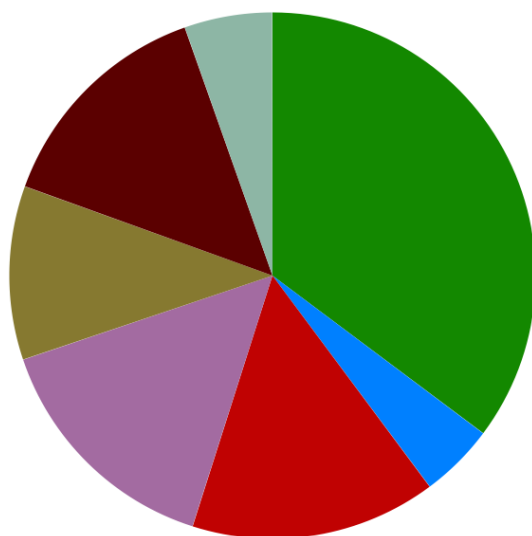


Powered by esd

The largest group is NS-Sec: Semi-routine occupations representing 20.30% of the ward's population.

169 of the lone parent households in Brookfield are not in employment.

Education



Residents by educational qualifications (count)

No qualifications	1,998
Apprenticeship	260
Level 1 qualifications	856
Level 2 qualifications	846
Level 3 qualifications	605
Level 4 qualifications and above	799
Other qualifications	306

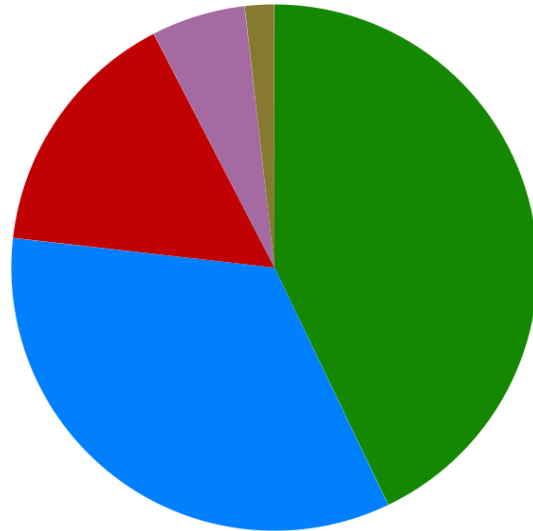
Powered by esd

The highest level of educational qualification achieved by the biggest group of Brookfield residents is No qualifications, which applies to 35.24%.

Health

Residents by level of health (count)

Very good health	3,131
Good health	2,476
Fairly good health	1,140
Poor health	422
Very bad health	132



Powered by esd

Brookfield has 422 (5.78%) residents in poor health and 132 (1.81%) residents in very bad health.

Its ranking for the number of residents in very bad health is 18 (out of 22) within Preston, 611 (out of 935) within North West, and 6,104 (out of 7,707) within England.

Glossary

Metrics used in this report are as follows:

Residents by age group (count). Source: Office for National Statistics. Dataset: Census 2011. <http://www.ons.gov.uk/ons/guide-method/census/2011/census-data/index.html>

Residents by ethnicity (count). Source: Office for National Statistics. Dataset: Census 2011. <http://www.ons.gov.uk/ons/guide-method/census/2011/census-data/index.html>

Households by tenure (count). Source: Office for National Statistics. Dataset: Census 2011. <http://www.ons.gov.uk/ons/guide-method/census/2011/census-data/index.html>

Residents by NS-Sec (count). Source: Office for National Statistics. Dataset: Census 2011. <http://www.ons.gov.uk/ons/guide-method/census/2011/census-data/index.html>

Residents by educational qualifications (count). Source: Office for National Statistics. Dataset: Census 2011. <http://www.ons.gov.uk/ons/guide-method/census/2011/census-data/index.html>

Residents by level of health (count). Source: Office for National Statistics. Dataset: Census 2011. <http://www.ons.gov.uk/ons/guide-method/census/2011/census-data/index.html>

